

STEP 1. Description of the project/proposal and local site characteristics:	
<b>a) File Reference No:</b>	
<b>(b) Brief description of the project or plan:</b>	Sensory Garden comprising of flower beds, tarmac walkway and water feature (Proposed Site Layout below).
<b>(c) Brief description of site characteristics:</b>	<p>The application site is &lt;900m<sup>2</sup> located within the Tom Ruane Park on the Sligo Road, Ballina Co. Mayo (See Map in Appendix A). The site is amenity grassland and is bounded to the north by a stone wall and treeline. The site was chosen as it is serviced by an existing car park which will provide a means of direct access.</p> <p>The Killala Bay /Moy Estuary SAC is located 45m to the north of the proposed development separated by amenity grassland and tree copses (see Appendix B for map showing development relative Natura 2000 sites).</p>
<b>(d) Relevant prescribed bodies consulted: e.g. DHLGH (NPWS), EPA, OPW</b>	None
<b>(e) Response to consultation:</b>	N/A



**STEP 2. Identification of relevant Natura 2000 sites using Source-Pathway- Receptor model and compilation of information on Qualifying Interests and conservation objectives.**

<b>European Site (code)</b>	<b>List of Qualifying interest/Special Conservation Interest</b>	<b>Distance from Proposed development</b>	<b>Connections Source-Pathway-Receptor</b>	<b>Considered further for screening Y/N</b>
Killala Bay/Moy Estuary SAC (000458)	13 QIs <a href="https://www.npws.ie/sites/default/files/protected-sites/conservation_objectives/CO00458.pdf">https://www.npws.ie/sites/default/files/protected-sites/conservation_objectives/CO00458.pdf</a>	45m north	Yes. Weak hydrogeological connection exists	Y
Killala Bay / Moy Estuary SPA (004036)	9 SCIs 8 birds species and wetland <a href="https://www.npws.ie/sites/default/files/protected-sites/conservation_objectives/CO04036.pdf">https://www.npws.ie/sites/default/files/protected-sites/conservation_objectives/CO04036.pdf</a>	2 km north east	Yes. Weak hydrogeological connection exists	Y
River Moy Complex SAC 002298	12 QIs <a href="https://www.npws.ie/sites/default/files/protected-sites/conservation_objectives/CO02298.pdf">https://www.npws.ie/sites/default/files/protected-sites/conservation_objectives/CO02298.pdf</a>	830m west	No. Proposed development is downstream	N
Lough Conn and Lough Cullin SPA 004228	5 SCIs 4 bird species and 1 wetland <a href="https://www.npws.ie/sites/default/files/protected-sites/conservation_objectives/CO04228.pdf">https://www.npws.ie/sites/default/files/protected-sites/conservation_objectives/CO04228.pdf</a>	7.4km southwest	N No ecological connection due to separation distance	N
Lough Hoe Bog SAC 000633	4 QIs <a href="https://www.npws.ie/sites/default/files/protected-sites/conservation_objectives/CO00633.pdf">https://www.npws.ie/sites/default/files/protected-sites/conservation_objectives/CO00633.pdf</a>	9.1km southeast	N No ecological connection due to separation distance	N
Ox Mountain Bogs SAC 002006	9 QIs <a href="https://www.npws.ie/sites/default/files/protected-sites/conservation_objectives/CO02006.pdf">https://www.npws.ie/sites/default/files/protected-sites/conservation_objectives/CO02006.pdf</a>	11.3km east	N No ecological connection due to separation distance	N

STEP 3. Assessment of Likely Significant Effects	
(a) Identify all potential direct and indirect impacts that may have an effect on the conservation objectives of a European site, taking into account the size and scale of the project under the following headings:	
Impacts	Possible Significance of Impacts: Duration/magnitude etc).
<p><b>Construction Phase</b></p> <ul style="list-style-type: none"> <li>• Vegetation clearance</li> <li>• Demolition</li> <li>• Surface water runoff from soil excavation/infill/landscaping</li> <li>• Dust noise vibration</li> <li>• Lighting disturbance</li> <li>• Impact on groundwater/dewatering</li> <li>• Storage of excavated/construction materials</li> <li>• Access to site</li> <li>• Pests</li> </ul>	<p>There will be minor excavation works required to provide solid base for installation of edging, walkways and water feature. Excavated material will be removed offsite.</p> <p>There will be limited noise disturbance but not significantly above background traffic noise.</p> <p>There are no surface water pathways to the Killala Bay/Moy Estuary SAC and SPA and the presence of amenity grasslands will attenuate any runoff generated.</p> <p>Indirect groundwater connectivity is weak and due to the short duration and low intensity of the works no significant effects are predicted on the nearby European sites.</p>
<p><b>Operational phase e.g.</b></p> <ul style="list-style-type: none"> <li>• Direct emission to air and water</li> <li>• Surface water runoff containing contaminant or sediment</li> <li>• Lighting disturbance</li> <li>• Noise/vibration</li> <li>• Changes to water/groundwater due to drainage or abstraction</li> <li>• Presence of people, vehicles and activities</li> <li>• Physical presence of structures (e.g. collision risks)</li> <li>• Potential for accidents or incidents</li> </ul>	<p>It is not expected that there will be a significant increase in disturbance levels over and above existing activity due to the proposed project.</p>
In-combination/other	None

<b>(b) Describe any likely changes to the European site:</b>	
<p>Examples of the type of changes to give consideration to include:</p> <ul style="list-style-type: none"> <li>• Reduction or fragmentation of habitat area</li> <li>• Disturbance to QI species</li> <li>• Habitat or species fragmentation</li> <li>• Reduction or fragmentation in species density</li> <li>• Changes in key indicators of conservation status value (water or air quality etc.)</li> <li>• Changes to areas of sensitivity or threats to QI</li> <li>• Interference with the key relationships that define the structure or ecological function of the site</li> </ul>	<p>None</p> <p>While the proposed development is in close proximity to the Killala Bay/ Moy Estuary SAC, due to the short duration of the construction and low intensity of use in the operational phase changes to the European site as listed are not likely to occur</p>

<b>(c) Are 'mitigation' measures necessary to reach a conclusion that likely significant effects can be ruled out at screening?</b>	
<p>Yes <input type="checkbox"/>      No <input checked="" type="checkbox"/></p>	<p>While best practice construction methods are likely to be implemented these are not required to avoid or reduce any affects on a European site. These measures are not relied upon to reach a conclusion of no significant effects on any European site.</p>

**Step 4. Screening Determination Statement**

**The assessment of significance of effects:**

Describe how the proposed development (alone or in-combination) is/is **not likely** to have **significant** effects on European site(s) in view of its conservation objectives.


On the basis of the information provided, which is considered adequate to undertake a screening determination and having regard to :

- The nature and scale of the proposed project on amenity grasslands in an urban setting
- Intervening grasslands acting as a buffer for any effects
- Absence of a direct connections with regard to the Surface-Pathway-Receptor model

It is concluded that the proposed project, individually or in combination with other plans or projects, would not be likely to have a significant effect on the above listed European sites or any other European site, in view of the said sites conservation objectives

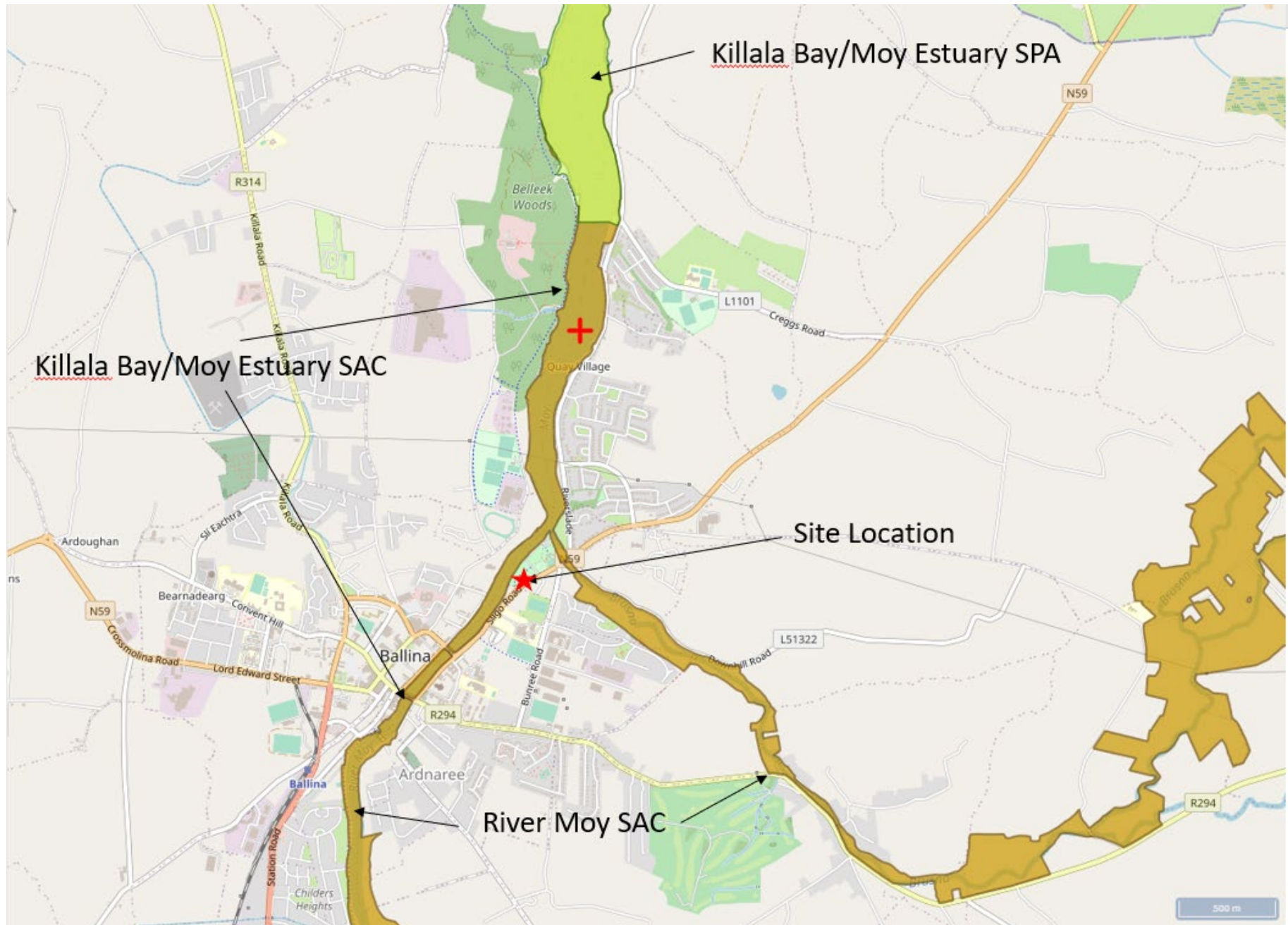
An Appropriate Assessment is not, therefore, required.

**Conclusion :**

	<b>Tick as Appropriate</b>	<b>Recommendation</b>
(i) It is clear that there is <b>no likelihood</b> of significant effects on a European	<input checked="" type="checkbox"/>	The proposal can be screened out: Appropriate assessment not required.
(ii) It is <b>uncertain</b> whether the proposal will have a significant effect on a European site.	<input type="checkbox"/>	<input type="checkbox"/> Request further information to complete screening <input type="checkbox"/> Request NIS <input type="checkbox"/> Refuse planning permission
(iii) <b>Significant effects</b> are likely.	<input type="checkbox"/>	<input type="checkbox"/> Request NIS <input type="checkbox"/> Refuse planning permission
<b>Signature and Date of Recommending Officer:</b>	Leo Brogan A. Assistant Scientist Environment, Climate Action and Agriculture Section 	
<b>Signature and Date of the Decision Maker:</b>		

## **APPENDIX A**

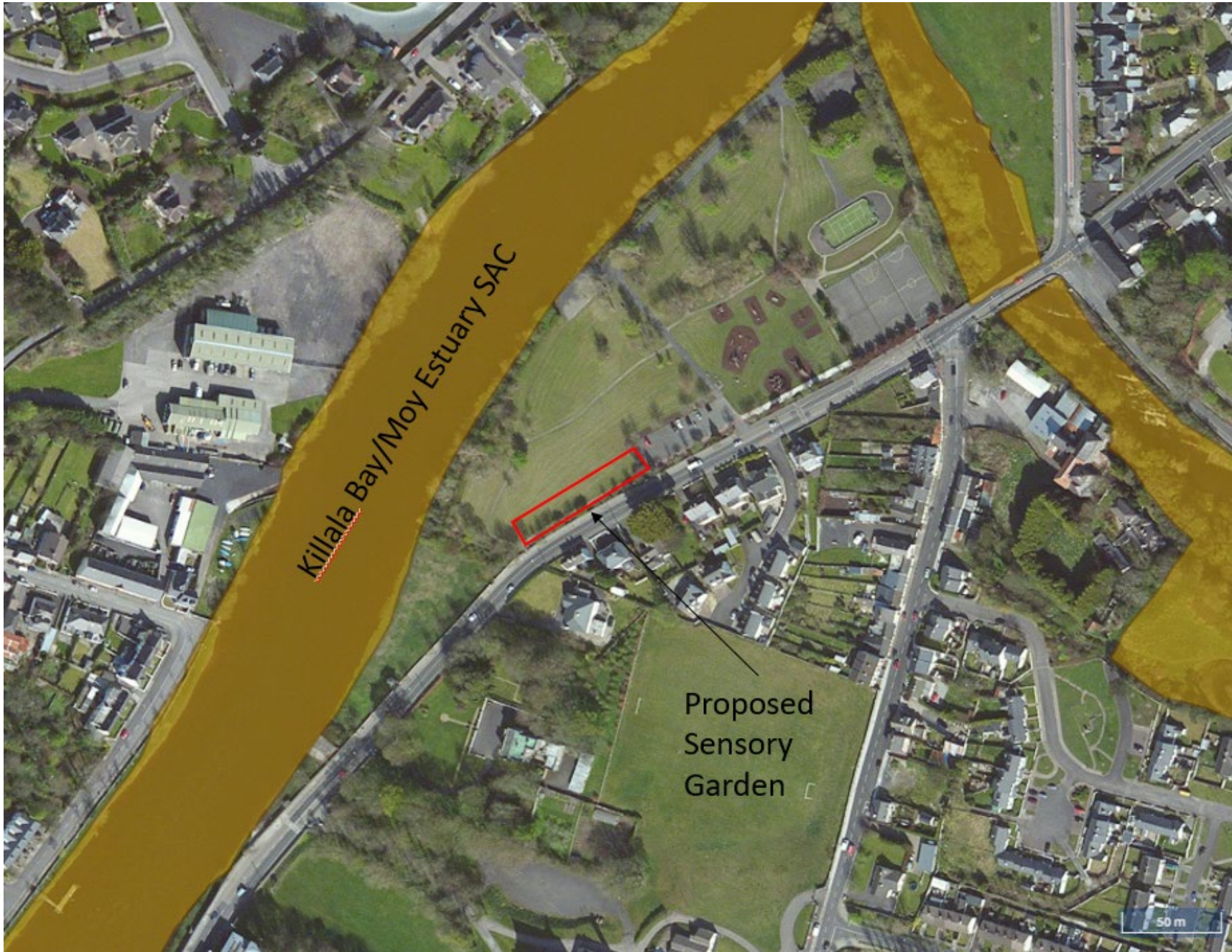
### Site Location Map



## **APPENDIX B**

Map showing development relative to Natura 2000 sites





Killaloe Bay/Moy Estuary SAC

Proposed  
Sensory  
Garden

50 m