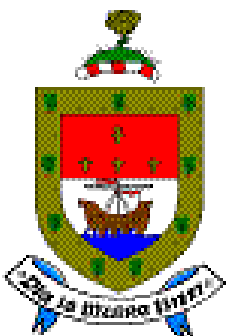


Material Amendments



Draft Mayo County Development Plan

Volume III Book of Maps



Report Format

These amendments are presented in 4 no. separate documents:

Volume 1: Written Statement & Volume 2: Development Management Standards

Amendments to the Written Statement and Development Management Standards of the Draft Mayo County Development Plan 2021-2027

Volumes 3: Book of Maps

Amendments to the Land Use Zonings of the Draft Mayo County Development Plan 2021-2027.

Volume 4: Supporting Documents

Amendments to the Housing Strategy / Housing Needs Demand Assessment (HNDA)

Volume 5: Environmental Assessments

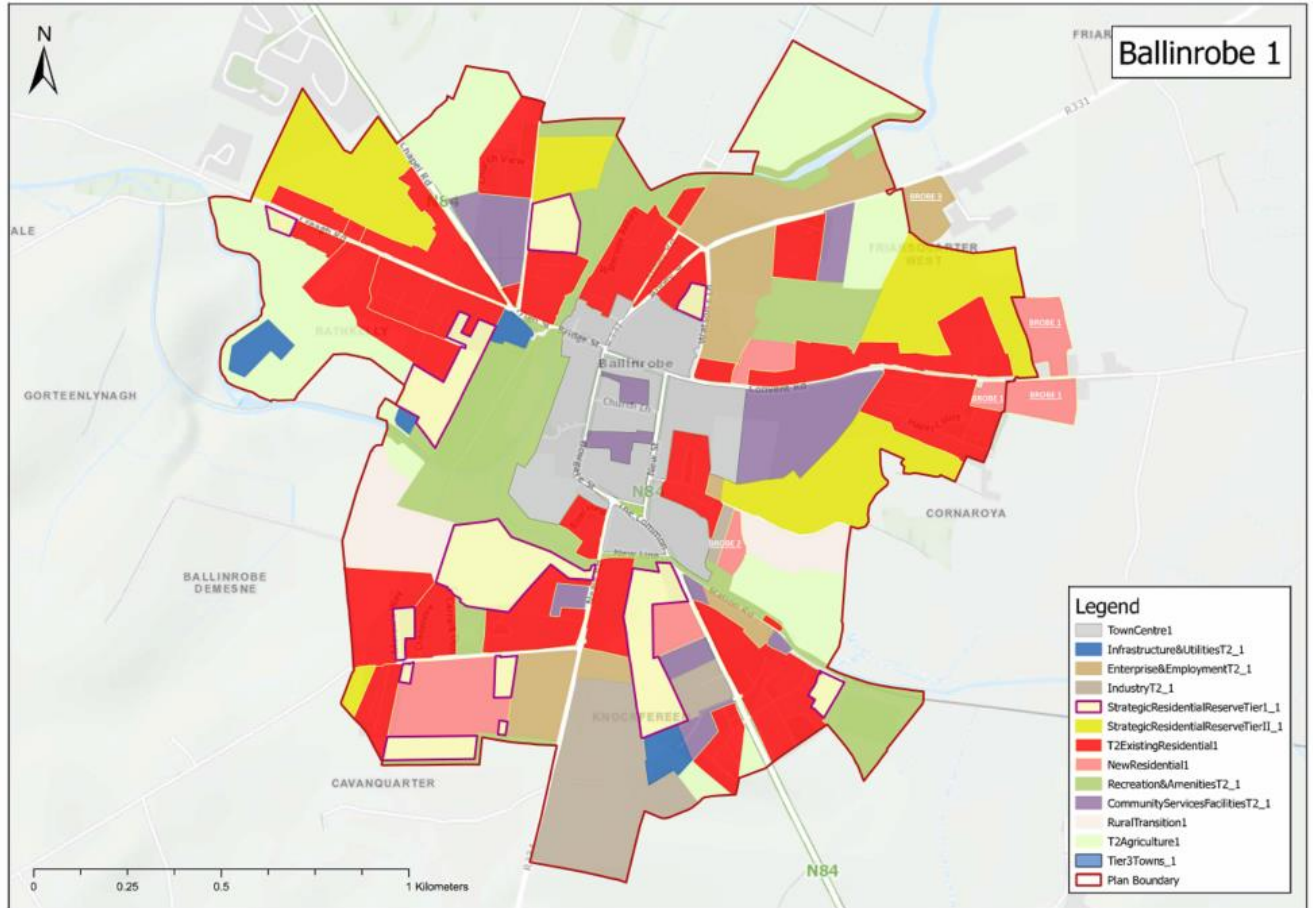
Amendments to Volume 4: Strategic Environmental Assessment, Natura Impact Report and Strategic Flood Risk Assessment.

Contents

Tier II: Ballinrobe.....	1
Tier II: Béal an Mhuirthead (Belmullet).....	9
Tier II: Claremorris	11
Tier II: Swinford.....	22
TIER III Self- Sustaining Towns	32
Tier III: Balla.....	33
Tier III: Killala.....	34
Tier III: Kiltimagh.....	40
TIER IV Rural Settlements.....	43
Tier IV: Ballindine.....	44
Tier IV: Ballycastle	45
Tier IV: Bangor Erris	46
Tier IV: Belcarra.....	48
Tier IV: Bellyvary.....	50
Tier IV: Bohola.....	51
Tier IV: Bunnyconnellan	52
Tier IV: Cong.....	53
Tier IV: Doohoma	54
Tier IV: Gob an Choire (Achill Sound).....	55
Tier IV: Irishtown.....	56
Tier IV: Kilkelly	57
Tier IV: Kilmaine.....	58
Tier IV: Lahardane.....	59
Tier IV: Mulranny.....	60
Tier IV: Shrule.....	61
Tier IV: Turlough	62
Tier V: Rural Countryside.....	63
Tier V: Aghagower	64
Tier V: Aghamore	65
Tier V: Attymass.....	66
Tier V: An Geata More (Binghamstown).....	67
Tier V: Ballycroy.....	68
Tier V: Ballyglass	69

Tier V: Ballyheane	70
Tier V: Began	71
Tier V: Breaffy	72
Tier V: Brickers.....	73
Tier V: Carnacon	74
Tier V: Carracastle	75
Tier V: Carrowteige	76
Tier V: Corclough.....	77
Tier V: Cross.....	78
Tier V: Crossboyne	79
Tier V: Dugort.....	80
Tier V: Eachleim (Aghleam).....	81
Tier V: Gaoth Saile (Geesala)	82
Tier V: Glenamoy	83
Tier V: Glenhest/Cloondaff.....	84
Tier V: Glenisland	85
Tier V: Hollymount	86
Tier V: Islandeady	87
Tier V: Inver	88
Tier V: Kilmovee.....	89
Tier V: Knockmore	90
Tier V: Mayo Abbey.....	91
Tier V: Moygownagh	92
Tier V: Moyne (Kilmeena)	93
Tier V: Parke	94
Tier V: Partry	95
Tier V: Pollathomish	96
Tier V: Roundfort.....	97
Tier V: The Neale.....	98
Tier V: Tourmakeady.....	99

Tier II: Ballinrobe



The above Land Use Zoning Map illustrates the proposed zoning changes, they are listed below:

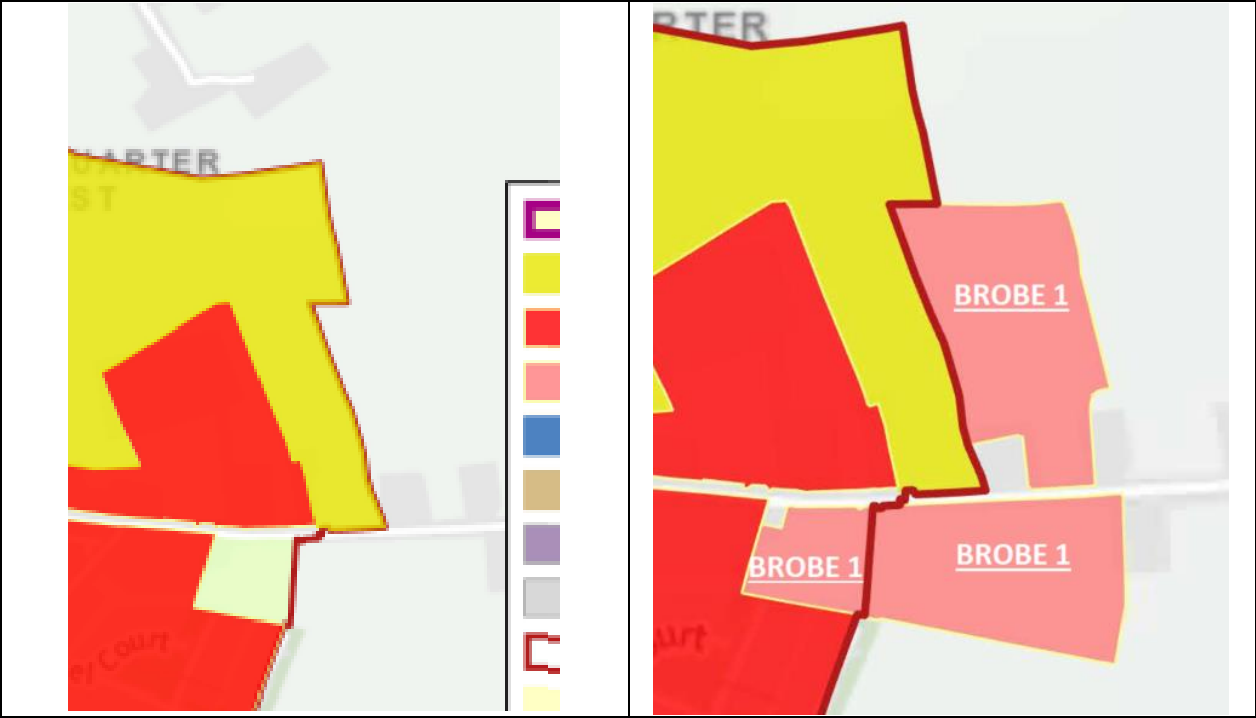
BROBE1 – Rezone lands from Agricultural/Unzoned to New Residential along Convent Road

BROBE 2 – Rezone lands to east of Corr na gCloch along Cornaroya from New Residential to Industry.

BROBE 3 - Rezone lands along R331 (Hollymount Road) from Unzoned Lands to Enterprise & Employment.

Proposed Amendment Tier II BROBE 1		
Section	Heading	Map Ref
Tier II: Self-Sustaining Growth Towns	Ballinrobe	BE 1

Rezone lands along Convent Road from Agricultural & unzoned lands outside the town boundary to New Residential.

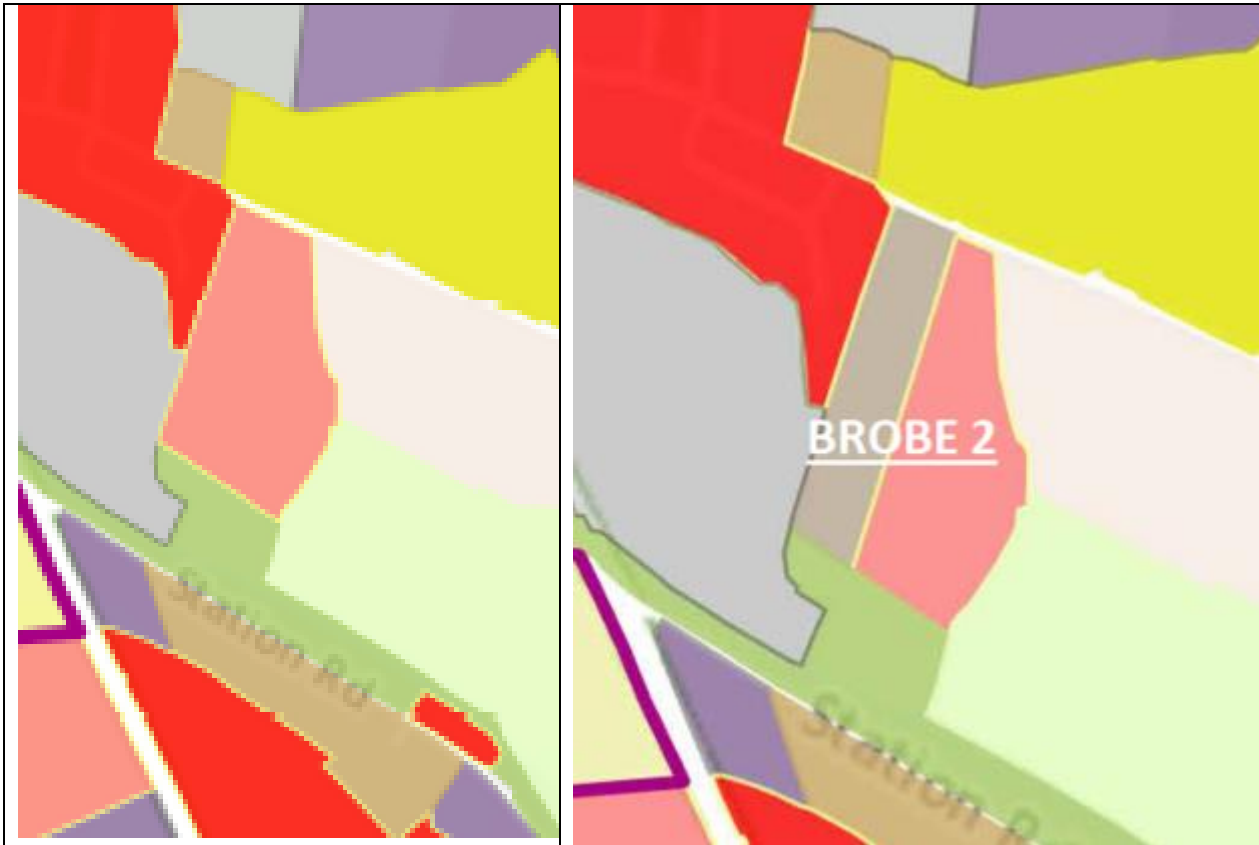


ZONING AS PER CE REPORT

PROPOSED MATERIAL AMENDMENT

Proposed Amendment Tier II BROBE 2		
Section	Heading	Map Ref
Tier II: Self-Sustaining Growth Towns	Ballinrobe	BE 1

Rezone lands to east of Corr na gCloch along Cornaroya from New Residential to Industry.

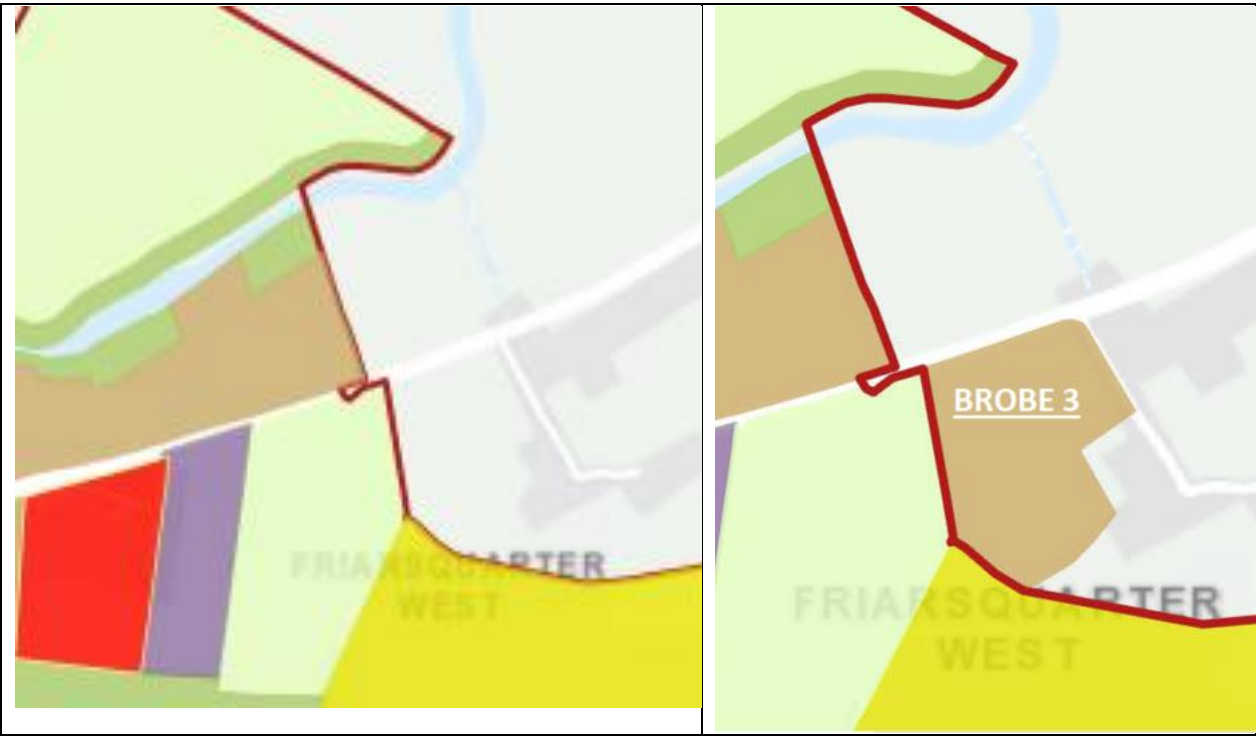


ZONING AS PER CE REPORT

PROPOSED MATERIAL AMENDMENT

Proposed Amendment Tier II BROBE 3		
Section	Heading	Map Ref
Tier II: Self-Sustaining Growth Towns	Ballinrobe	BE 1

Rezone lands along R331 (Hollymount Road) from Unzoned Lands to Enterprise & Employment.



ZONING AS PER CE REPORT

PROPOSED MATERIAL AMENDMENT

Proposed Amendment Tier II BROBE 4		
Section	Heading	Map Ref
Tier II: Self-Sustaining Growth Towns	Ballinrobe	BE 2

Create an additional Opportunity Site on unzoned lands along Bog Road.



Proposed Amendment Tier II BROBE 5		
Section	Heading	Map Ref
Tier II: Self-Sustaining Growth Towns	Ballinrobe	BE 2

Create an additional new Opportunity Site on Enterprise & Employment Lands along Watson’s Lane.



Proposed Amendment Tier II BROBE 6		
Section	Heading	Map Ref
Tier II: Self-Sustaining Growth Towns	Ballinrobe	BE 2

Create an additional Opportunity Site on Town Centre zoned lands along New Street.



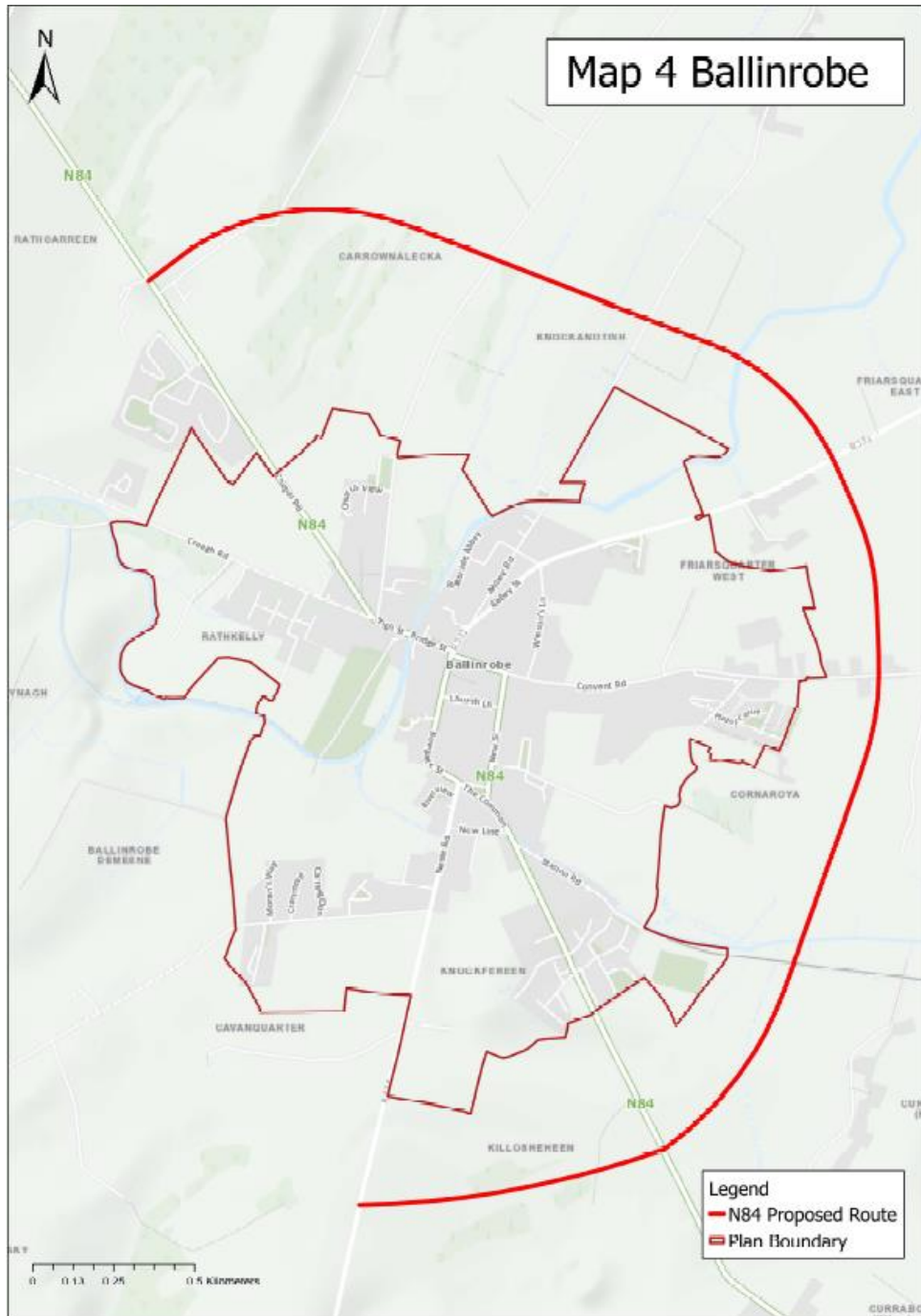
Proposed Amendment Tier II BROBE 7		
Section	Heading	Map Ref
Tier II: Self-Sustaining Growth Towns	Ballinrobe	BE 2

Create an additional Opportunity Site on Town Centre zoned lands along Neale Road and New Line



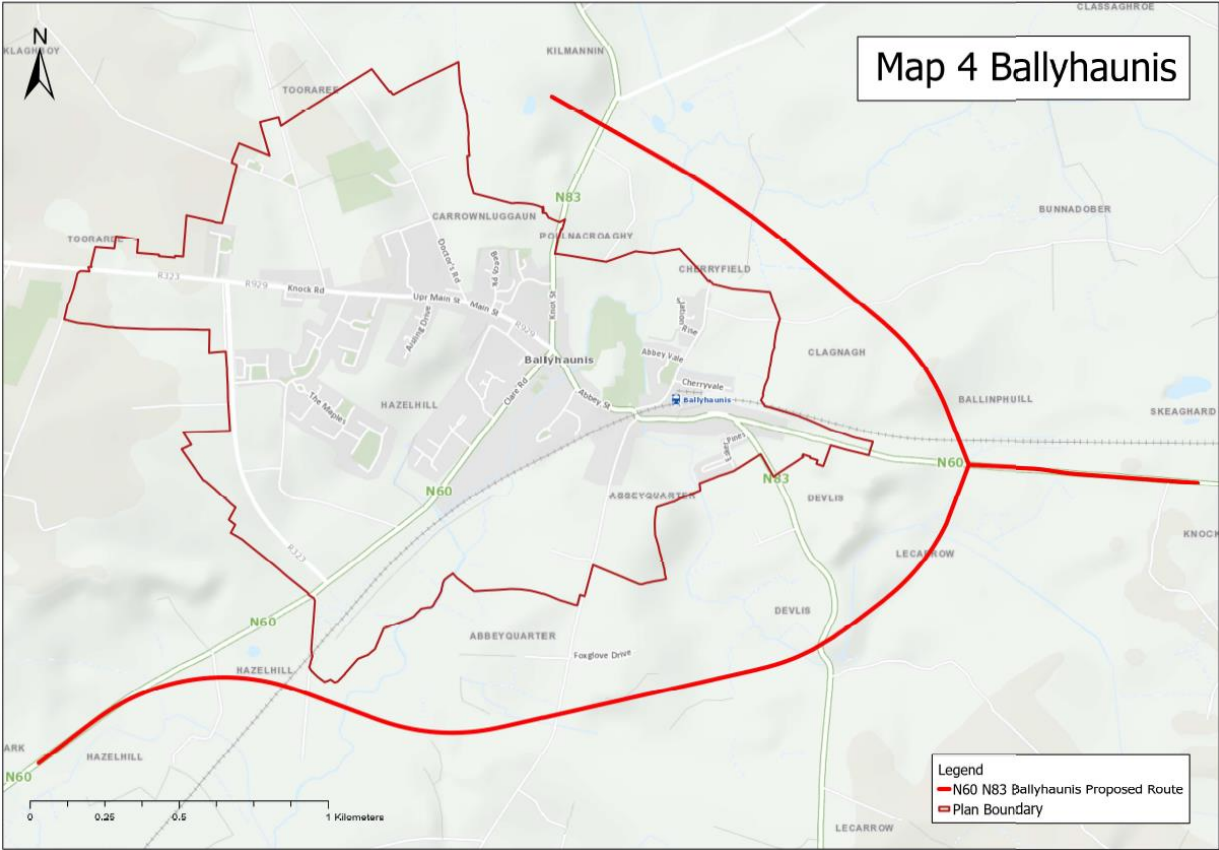
Proposed Amendment Tier II BROBE 7		
Section	Heading	Map Ref
Tier II: Self-Sustaining Growth Towns	Ballinrobe	BE 4

Insert new map outlining proposed N84 Bypass of Ballinrobe as shown below:

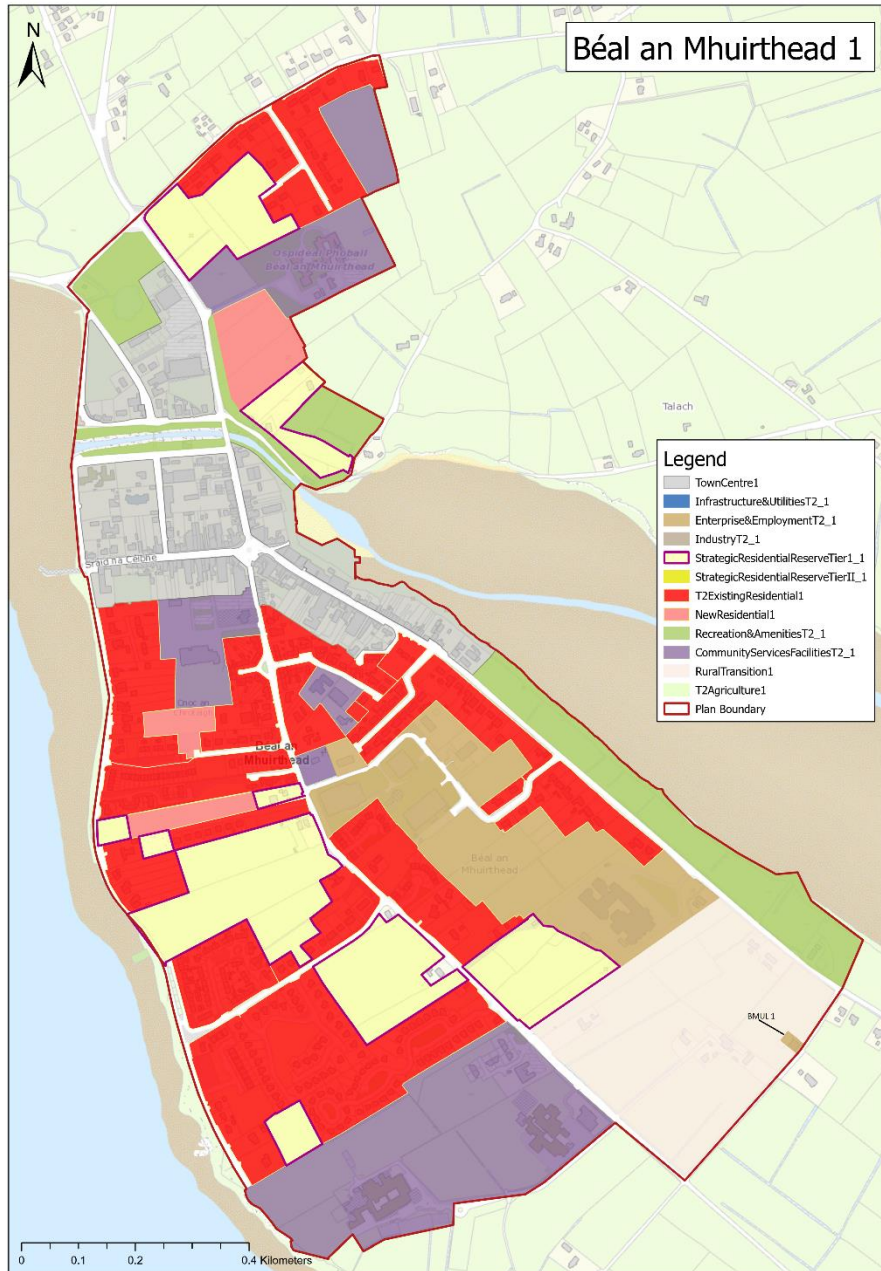


Proposed Amendment Tier II BHAUN 1		
Section	Heading	Map Ref
Tier II: Self-Sustaining Growth Towns	Ballyhaunis	BS 4

Insert new map outlining proposed N83 Bypass of Ballyhaunis as shown below:



Tier II: Béal an Mhuirthead (Belmullet)



The above Land Use Zoning Map illustrates the proposed zoning change, it is listed below:

BMUL 1 – Rezone lands from Rural Transition Zone to Enterprise & Employment

Proposed Amendment Tier II BMEL 1		
Section	Heading	Map Ref
Tier II: Self-Sustaining Growth Towns	Beal an Mhuirthead (Bellmullet)	BT 2

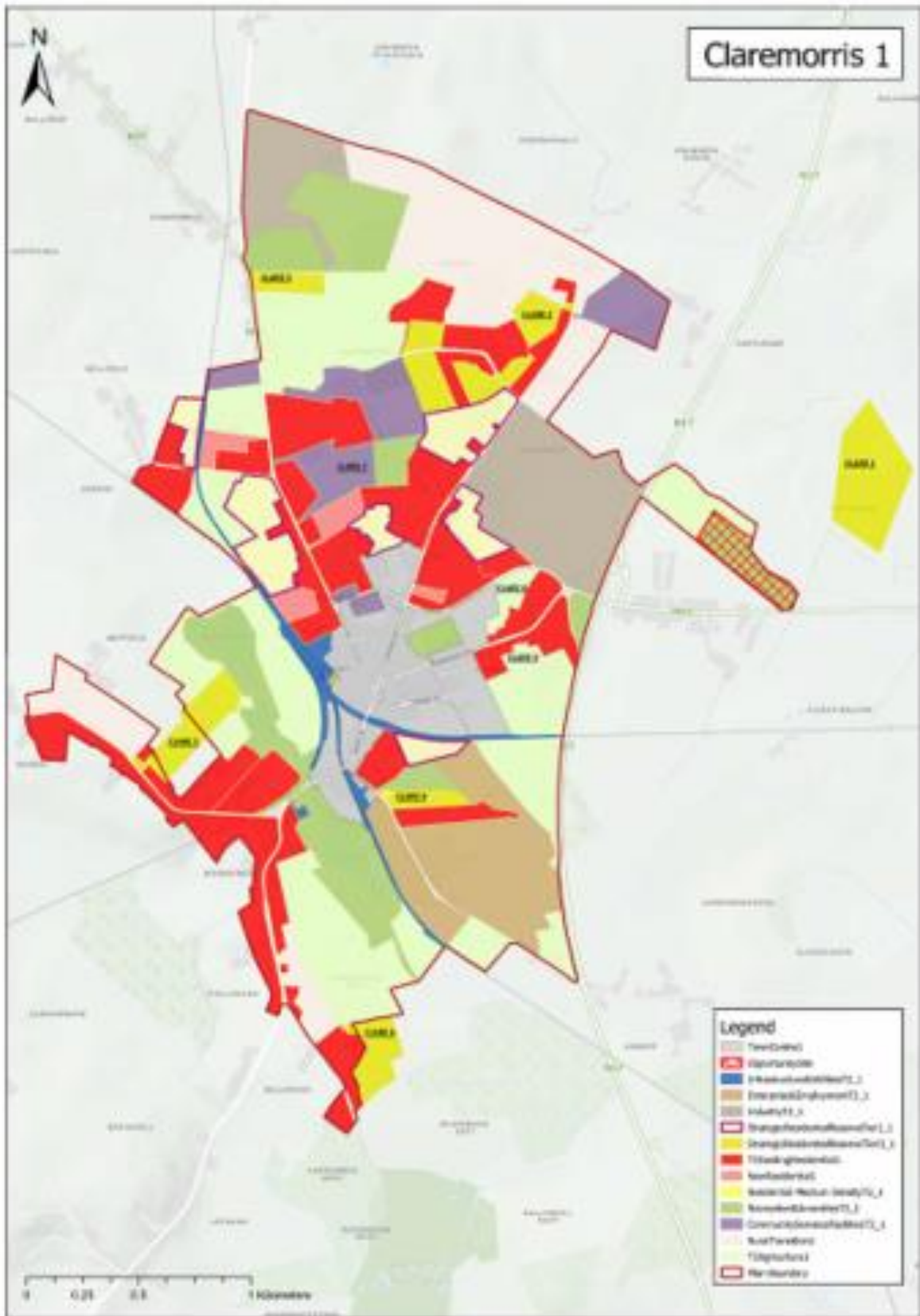
Rezone lands along the L52851 from Rural Transition Zone to Enterprise & Employment



ZONING AS PER CE REPORT

PROPOSED MATERIAL AMENDMENT

Tier II: Claremorris



The above Land Use Zoning Map illustrates the proposed zoning changes, they are listed below:

CLARE 1 – Rezone lands in Drumkeen from unzoned lands to Strategic Residential Reserve Tier II.

CLARE 2 – Rezone lands adjoining Cluain Aoibhinn accessed from the Knock Road from Rural Transition Zone to Strategic Residential Reserve Tier II.

CLARE 3 – Rezone lands along the N60 from Agriculture to Strategic Residential Reserve Tier II.

CLARE 4 – Rezone lands north of Clareville from Recreation & Amenities to Strategic Residential Reserve Tier II.

CLARE 5 – Rezone lands between Mayfield and Mayfield lake from unzoned lands/existing residential & agriculture to Strategic Residential Reserve Tier II.

CLARE 6 – Rezone lands adjoining Rushbrook from unzoned lands to Strategic Residential Reserve Tier II.

CLARE 7 – *Rezone lands south of Beechpark from Recreation & Amenities to Community Service Facilities.*

CLARE 8 – *Rezone lands opposite the McWilliam Park from Strategic Residential Reserve Tier 1 to Agriculture.*

CLARE 9 – *Rezone lands to south of R331 from Existing Residential to Agriculture.*

Proposed Amendment Tier II Clare 1		
Section	Heading	Map Ref
Tier II: Self-Sustaining Growth Towns	Claremorris	CS 1

Rezone lands in Drumkeen from unzoned lands to Strategic Residential Reserve Tier II.

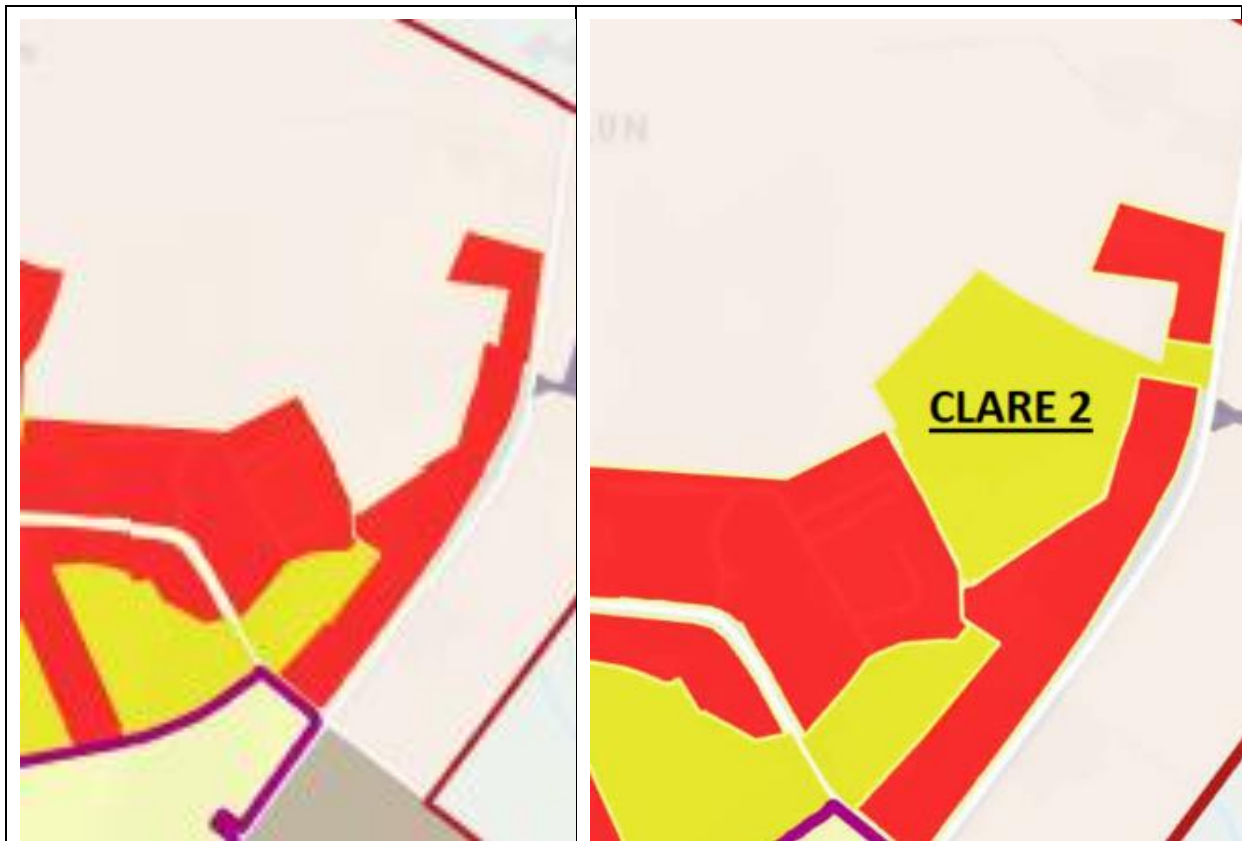


ZONING AS PER CE REPORT

PROPOSED MATERIAL AMENDMENT

Proposed Amendment Tier II Clare 2		
Section	Heading	Map Ref
Tier II: Self-Sustaining Growth Towns	Claremorris	CS 1

Rezone lands adjoining Cluain Aoibhinn accessed from the Knock Road from Rural Transition Zone to Strategic Residential Reserve Tier II.



ZONING AS PER CE REPORT

PROPOSED MATERIAL AMENDMENT

Proposed Amendment Tier II Clare 3		
Section	Heading	Map Ref
Tier II: Self-Sustaining Growth Towns	Claremorris	CS 1

Rezone lands along the N60 from Agriculture to Strategic Residential Reserve Tier II.

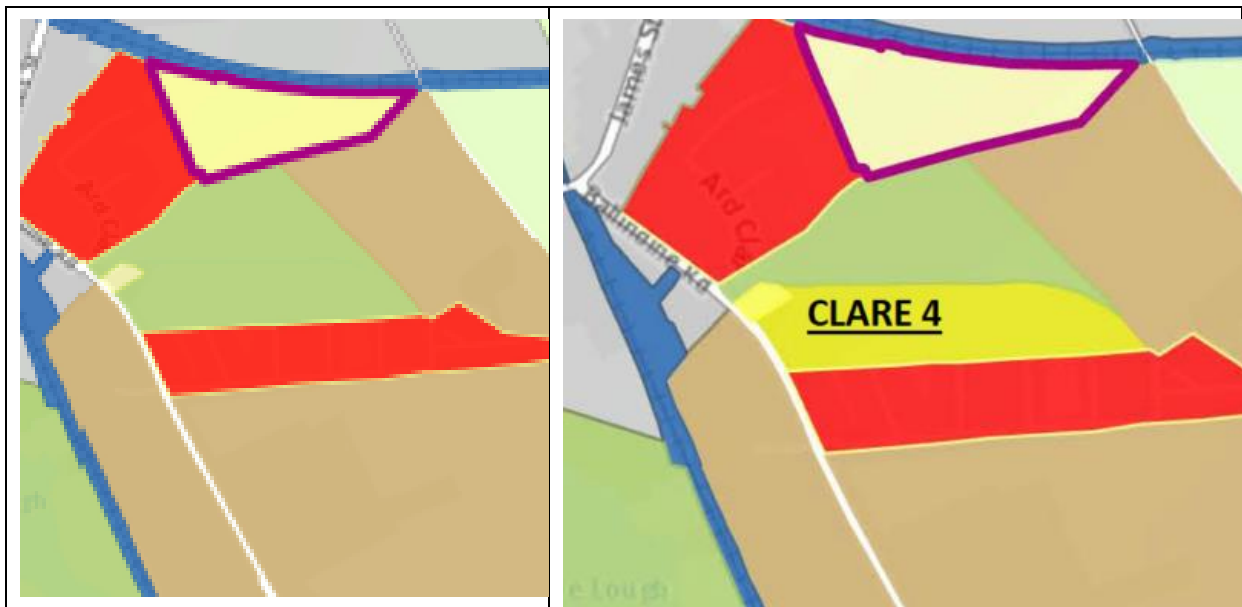


ZONING AS PER CE REPORT

PROPOSED MATERIAL AMENDMENT

Proposed Amendment Tier II Clare 4		
Section	Heading	Map Ref
Tier II: Self-Sustaining Growth Towns	Claremorris	CS 1

Rezone lands north of Clareville from Recreation & Amenities to Strategic Residential Reserve Tier II

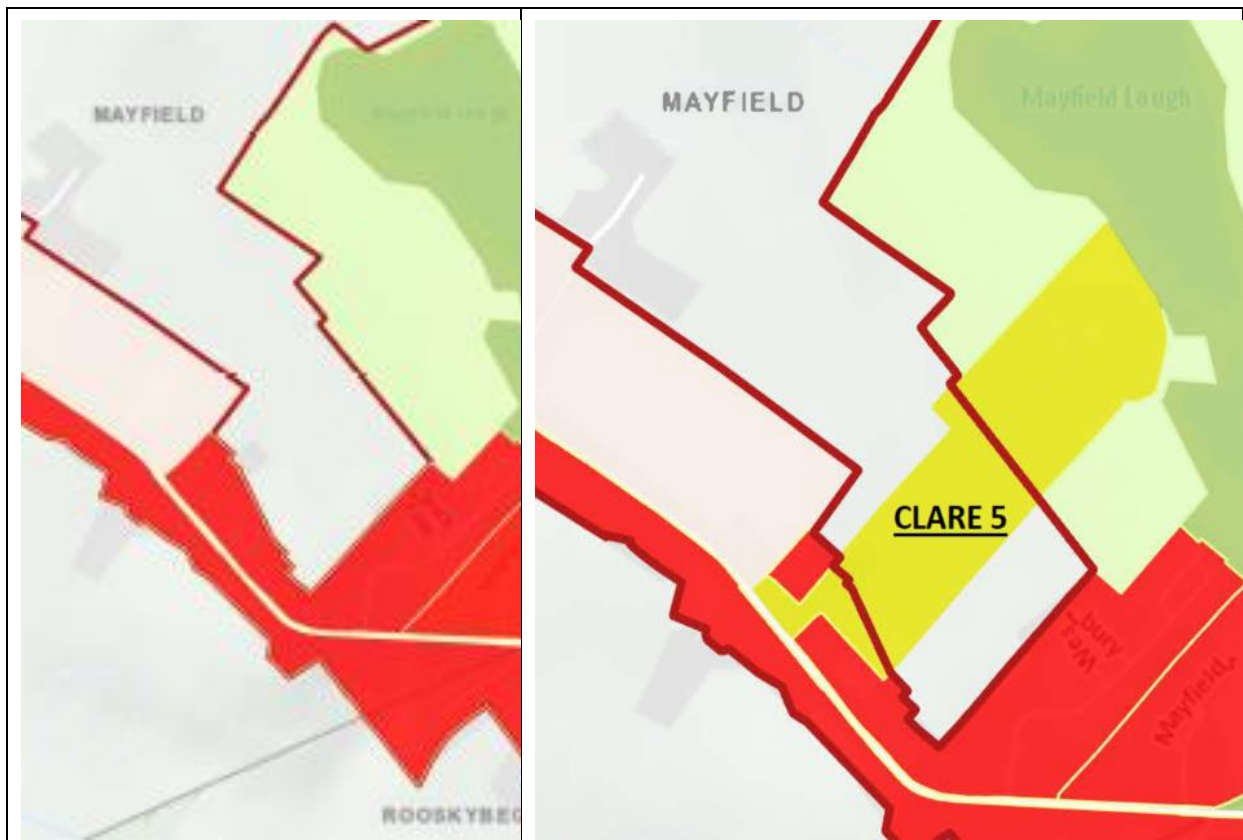


ZONING AS PER CE REPORT

PROPOSED MATERIAL AMENDMENT

Proposed Amendment Tier II Clare 5		
Section	Heading	Map Ref
Tier II: Self-Sustaining Growth Towns	Claremorris	CS 1

Rezone lands between Mayfield and Mayfield lake from unzoned lands/existing residential & agriculture to Strategic Residential Reserve Tier II.

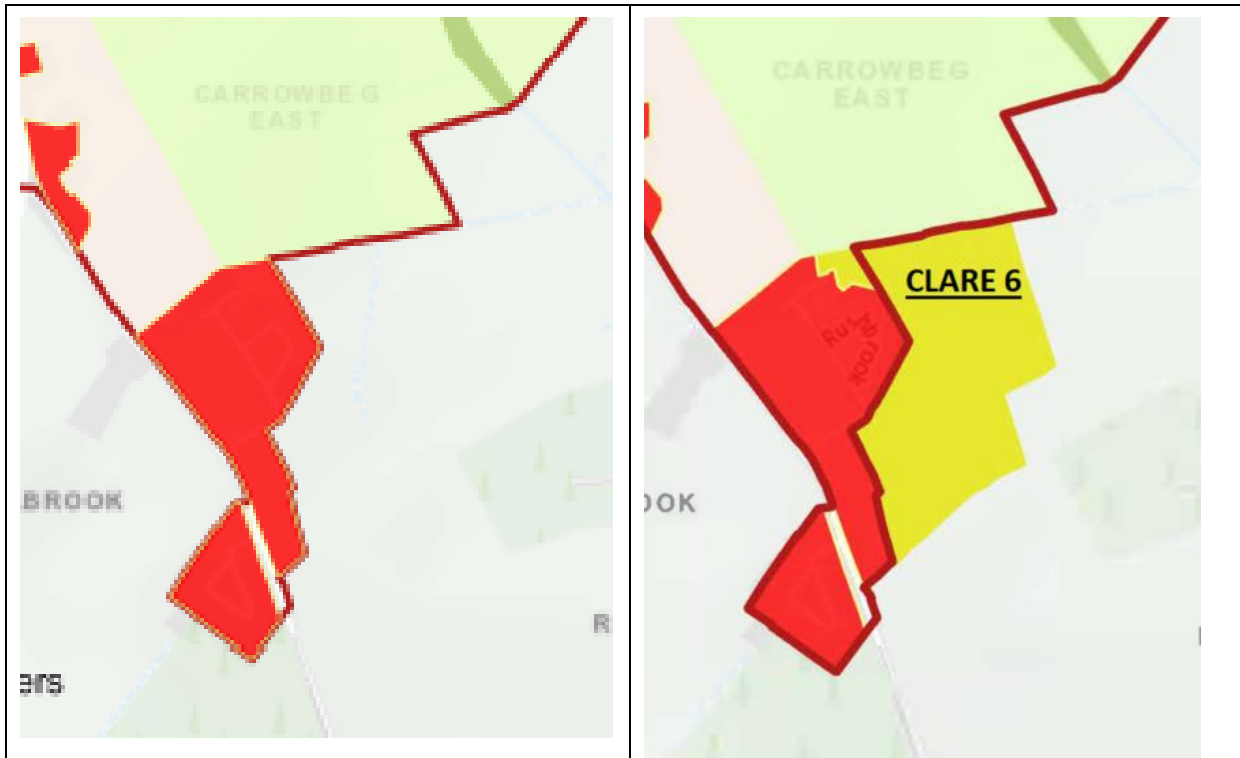


ZONING AS PER CE REPORT

PROPOSED MATERIAL AMENDMENT

Proposed Amendment Tier II Clare 6		
Section	Heading	Map Ref
Tier II: Self-Sustaining Growth Towns	Claremorris	CS 1

Rezone lands adjoining Rushbrook from unzoned lands to Strategic Residential Reserve Tier II.



ZONING AS PER CE REPORT

PROPOSED MATERIAL AMENDMENT

Proposed Amendment Tier II Clare 7		
Section	Heading	Map Ref
Tier II: Self-Sustaining Growth Towns	Claremorris	CS 1

Rezone lands south of Beechpark from Recreation & Amenities to Community Service Facilities.



ZONING AS PER CE REPORT

PROPOSED MATERIAL AMENDMENT

Proposed Amendment Tier II Clare 8		
Section	Heading	Map Ref
Tier II: Self-Sustaining Growth Towns	Claremorris	CS 1

Rezone lands opposite the McWilliam Park from Strategic Residential Reserve Tier 1 to Agriculture.

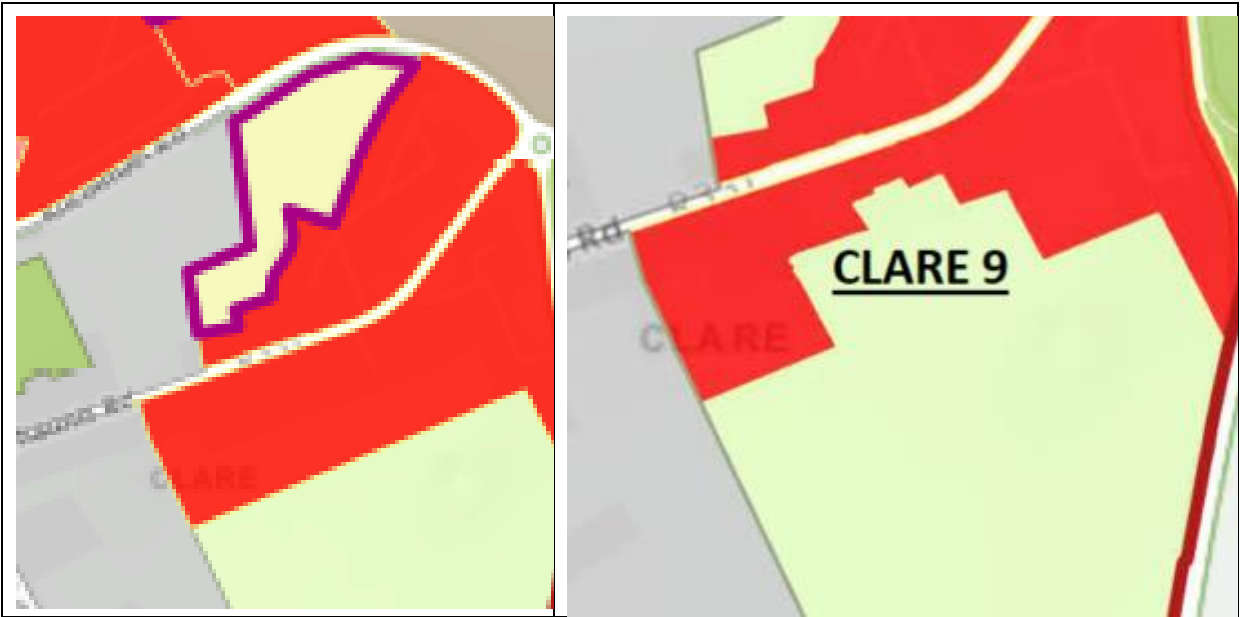


ZONING AS PER CE REPORT

PROPOSED MATERIAL AMENDMENT

Proposed Amendment Tier II Clare 9		
Section	Heading	Map Ref
Tier II: Self-Sustaining Growth Towns	Claremorris	CS 1

Rezone lands to south of R331 from Existing Residential to Agriculture.

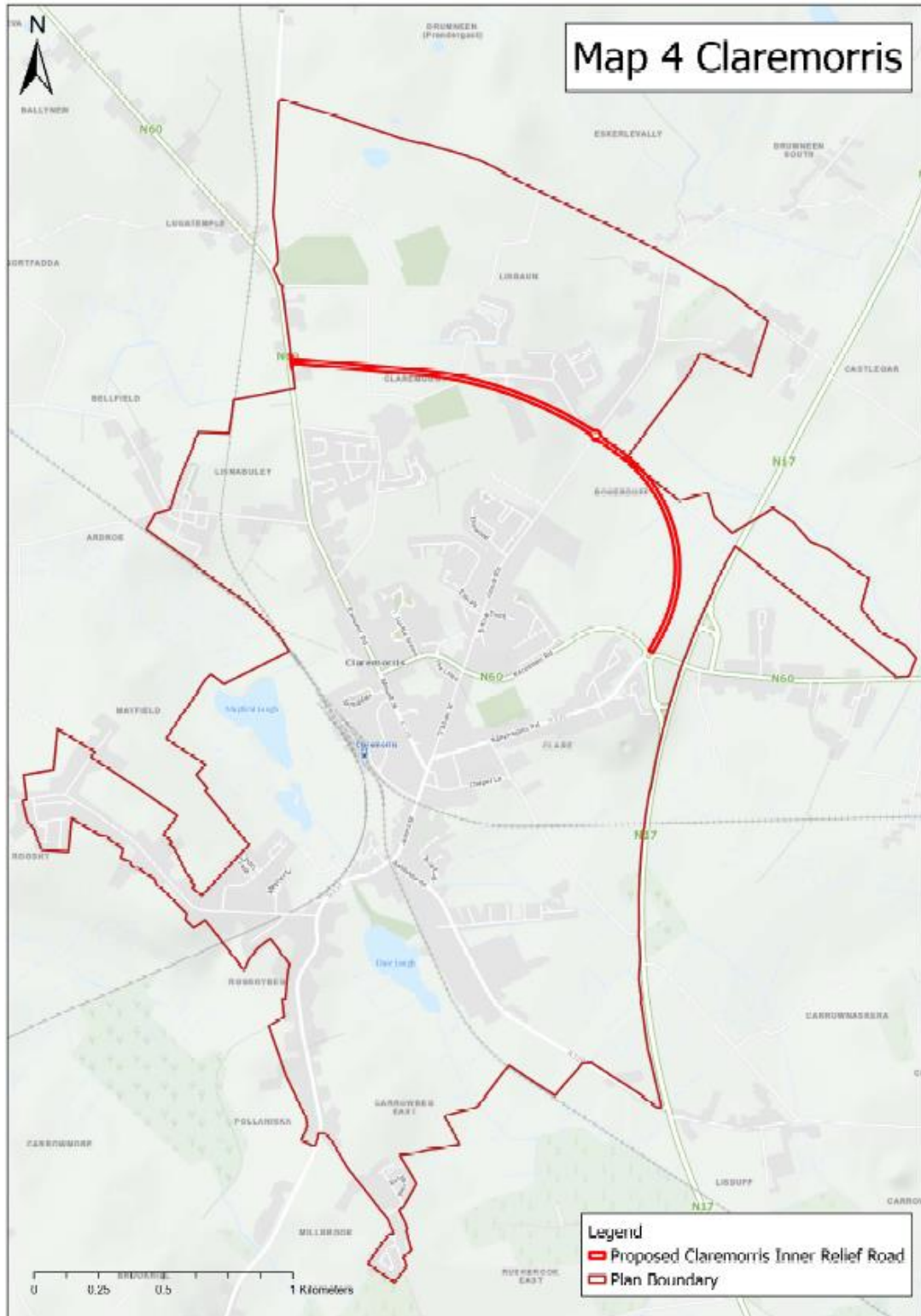


ZONING AS PER CE REPORT

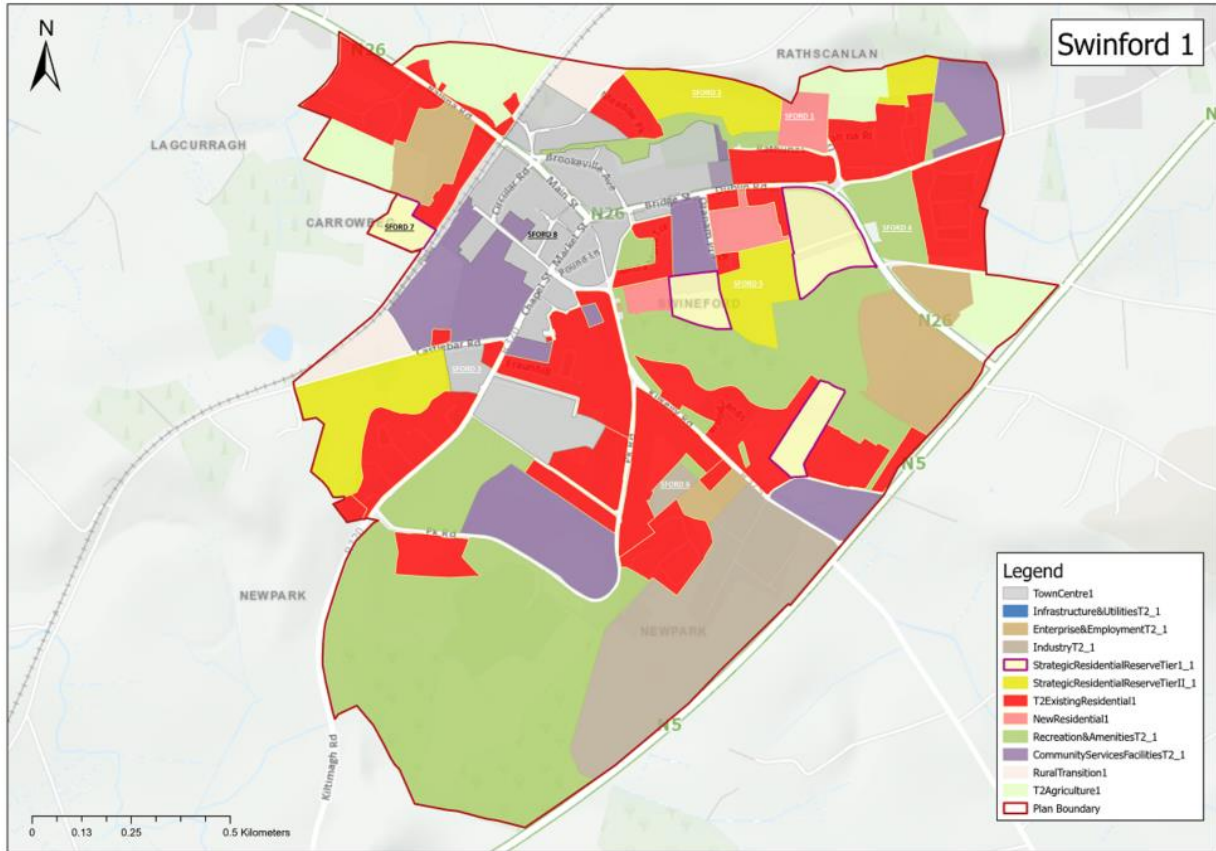
PROPOSED MATERIAL AMENDMENT

Proposed Amendment Tier II Clare 10		
Section	Heading	Map Ref
Tier II: Self-Sustaining Growth Towns	Claremorris	CS 4

Insert new map outlining proposed N60 Inner Relief Road as shown below:



Tier II: Swinford



The above Land Use Zoning Map illustrates the proposed zoning changes, they are listed below:

SFORD 1 –lands adjoining Dun na Ri from Recreation & Amenities/Rural Transition Zone & Agriculture to New Residential.

SFORD 2 – Rezone lands east of Meadow Park from Rural Transition Zone / Recreation & Amenities to Strategic Residential Reserve Tier I.

SFORD 3 – Rezone lands along the R320 (Adjacent Tesco) from Existing Residential to Town Centre east of Meadow Park from Rural Transition Zone / Recreation & Amenities to Strategic Residential Reserve Tier I.

SFORD 4 – Rezone lands sited between the N5 and Rathdubh from Strategic Residential Reserve Tier I to Recreation & Amenities.

SFORD 5 – Rezone lands to the east of the hospital from Strategic Residential Reserve Tier I to Strategic Residential Reserve Tier II.

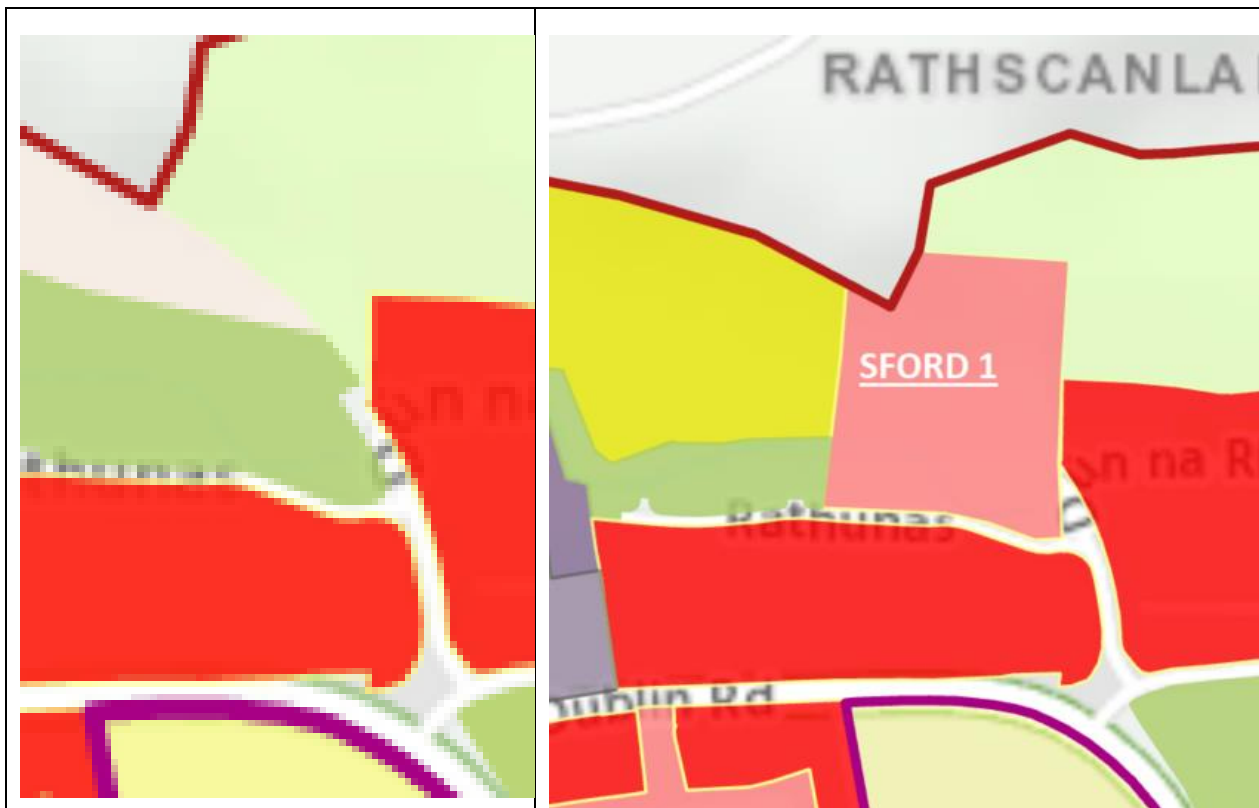
SFORD 6 – Rezone lands to the north-east of New Park Industrial Estate from Strategic Residential Reserve Tier I to Industry.

SFORD 7 – Rezone lands to the west of Carrowbeg & south of Baxter from Enterprise & Employment to Strategic Residential Reserve Tier I.

SFORD 8 – Rezone lands along Station Road from Community Services Facilities to Town Centre.

Proposed Amendment Tier II SFORD 1		
Section	Heading	Map Ref
Tier II: Self-Sustaining Growth Towns	Swinford	SD 1

Rezone lands adjoining Dun na Ri from Recreation & Amenities/Rural Transition Zone & Agriculture to New Residential.

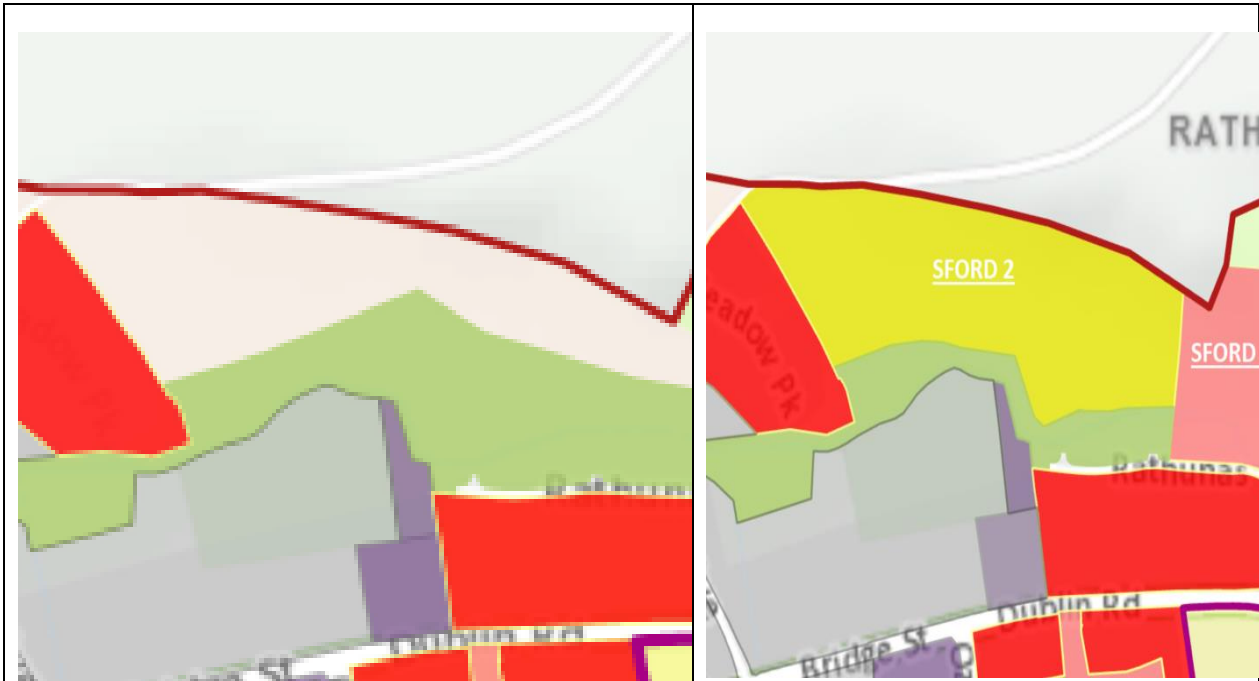


ZONING AS PER CE REPORT

PROPOSED MATERIAL AMENDMENT

Proposed Amendment Tier II SFORD 2		
Section	Heading	Map Ref
Tier II: Self-Sustaining Growth Towns	Swinford	SD 1

Rezone lands east of Meadow Park from Rural Transition Zone / Recreation & Amenities to Strategic Residential Reserve Tier I.



ZONING AS PER CE REPORT

PROPOSED MATERIAL AMENDMENT

Proposed Amendment Tier II SFORD 3		
Section	Heading	Map Ref
Tier II: Self-Sustaining Growth Towns	Swinford	SD 1

Rezone lands along the R320 (Adjacent Tesco) from Existing Residential to Town Centre east of Meadow Park from Rural Transition Zone / Recreation & Amenities to Strategic Residential Reserve Tier I.



ZONING AS PER CE REPORT

PROPOSED MATERIAL AMENDMENT

Proposed Amendment Tier II SFORD 4		
Section	Heading	Map Ref
Tier II: Self-Sustaining Growth Towns	Swinford	SD 1

Rezone lands sited between the N5 and Rathdubh from Strategic Residential Reserve Tier I to Recreation & Amenities.

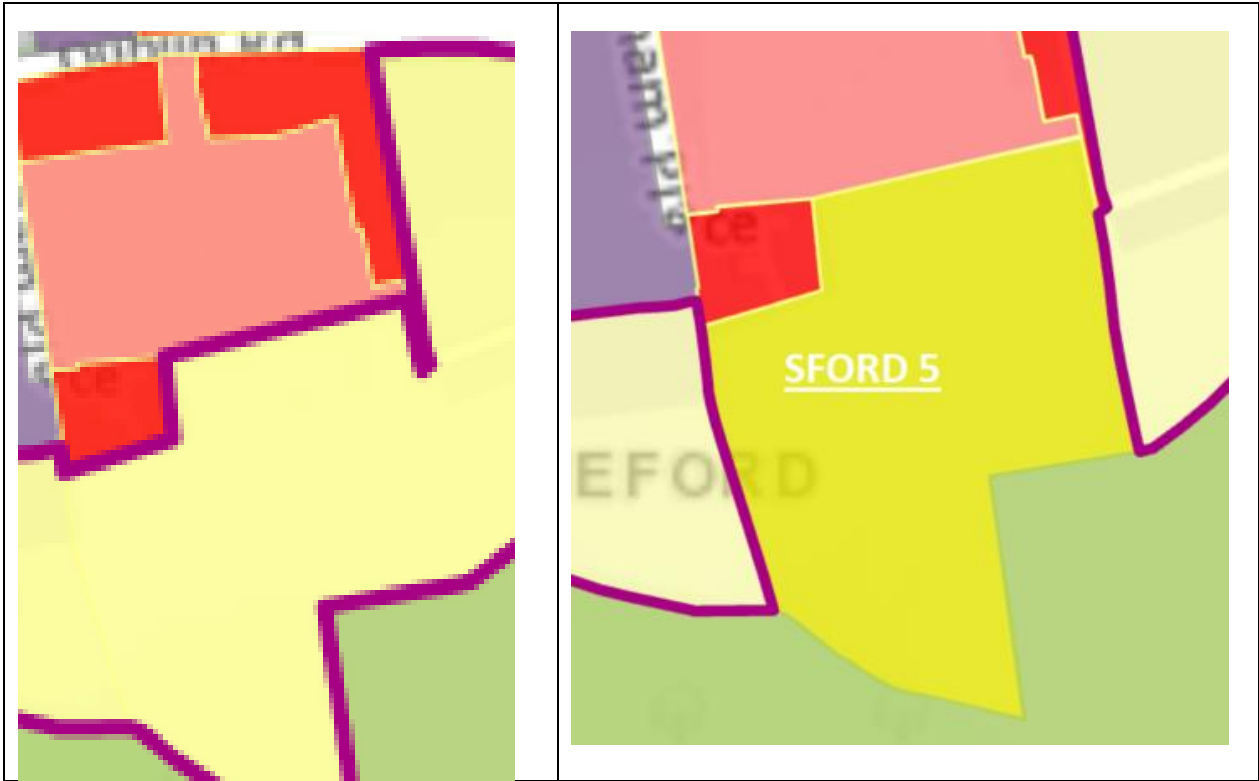


ZONING AS PER CE REPORT

PROPOSED MATERIAL AMENDMENT

Proposed Amendment Tier II SFORD 5		
Section	Heading	Map Ref
Tier II: Self-Sustaining Growth Towns	Swinford	SD 1

Rezone lands to the east of the hospital from Strategic Residential Reserve Tier I to Strategic Residential Reserve Tier II.



ZONING AS PER CE REPORT

PROPOSED MATERIAL AMENDMENT

Proposed Amendment Tier II SFORD 6		
Section	Heading	Map Ref
Tier II: Self-Sustaining Growth Towns	Swinford	SD 1

Rezone lands to the north-east of New Park Industrial Estate from Strategic Residential Reserve Tier I to Industry.

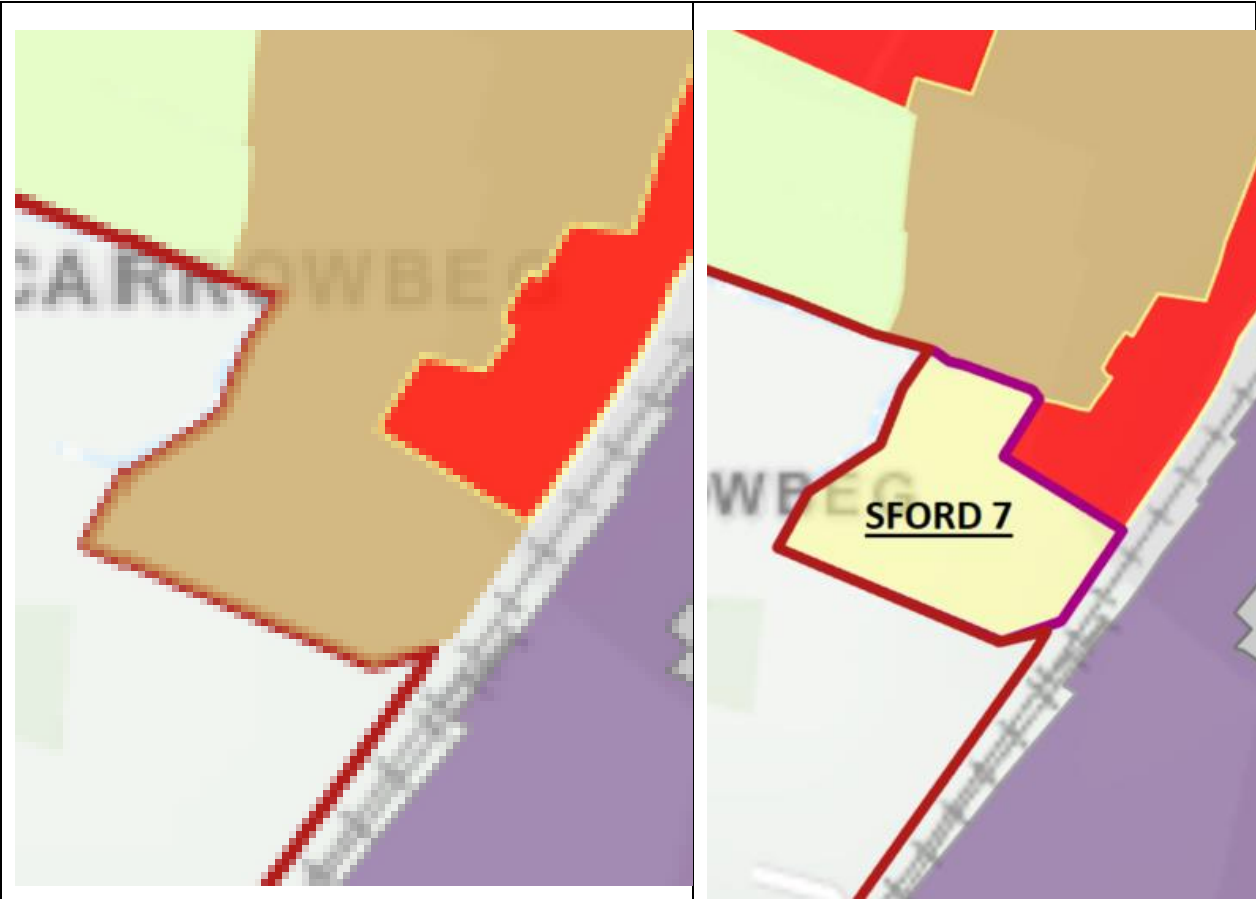


ZONING AS PER CE REPORT

PROPOSED MATERIAL AMENDMENT

Proposed Amendment Tier II SFORD 7		
Section	Heading	Map Ref
Tier II: Self-Sustaining Growth Towns	Swinford	SD 1

Rezone lands to the west of Carrowbeg & south of Baxter from Enterprise & Employment to Strategic Residential Reserve Tier I.



ZONING AS PER CE REPORT

PROPOSED MATERIAL AMENDMENT

Proposed Amendment Tier II SFORD 8		
Section	Heading	Map Ref
Tier II: Self-Sustaining Growth Towns	Swinford	SD 1

Rezone lands along Station Road from Community Services Facilities to Town Centre.



ZONING AS PER CE REPORT

PROPOSED MATERIAL AMENDMENT

Proposed Amendment Tier II SFORD 9		
Section	Heading	Map Ref
Tier II: Self-Sustaining Growth Towns	Swinford	SD 1

Create an additional Opportunity Site labelled G adjoining the primary school on Station Road as illustrated below:

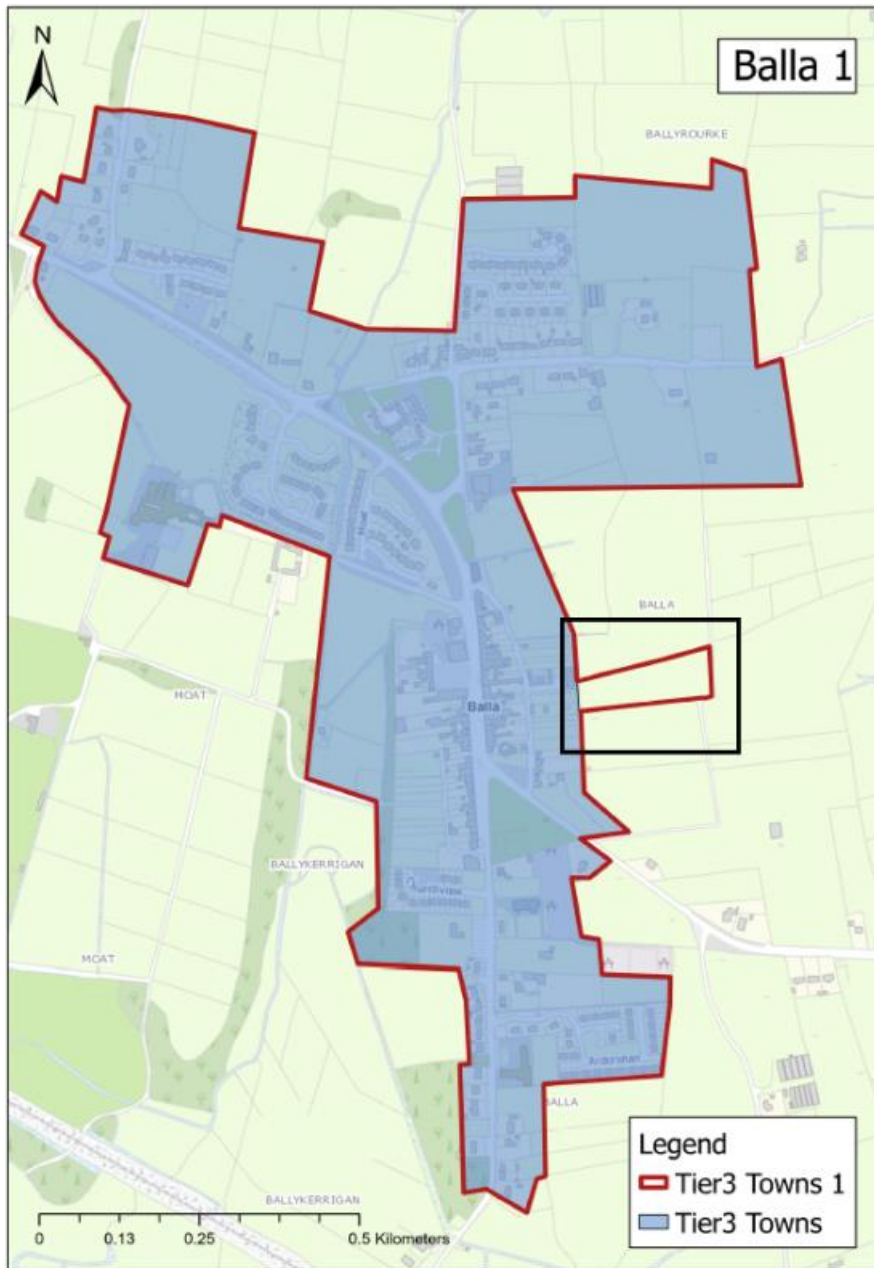


TIER III Self- Sustaining Towns

Tier III: Balla

Proposed Amendment Tier III Balla 2		
Section	Heading	Map Ref
Tier III: Self-Sustaining Towns	Balla	BA 1

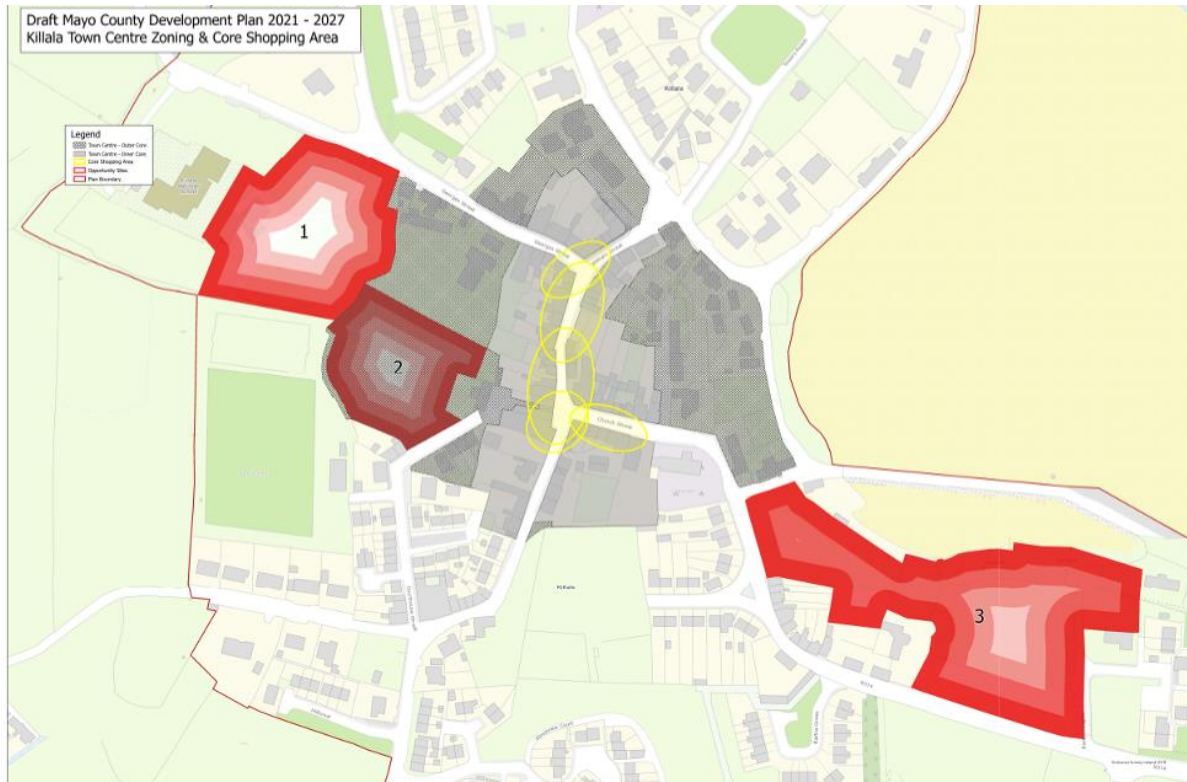
Extend settlement boundary of Balla to include outlined lands as illustrated by the black outlined and labelled Tier 3 Towns 1 below:



Tier III: Killala

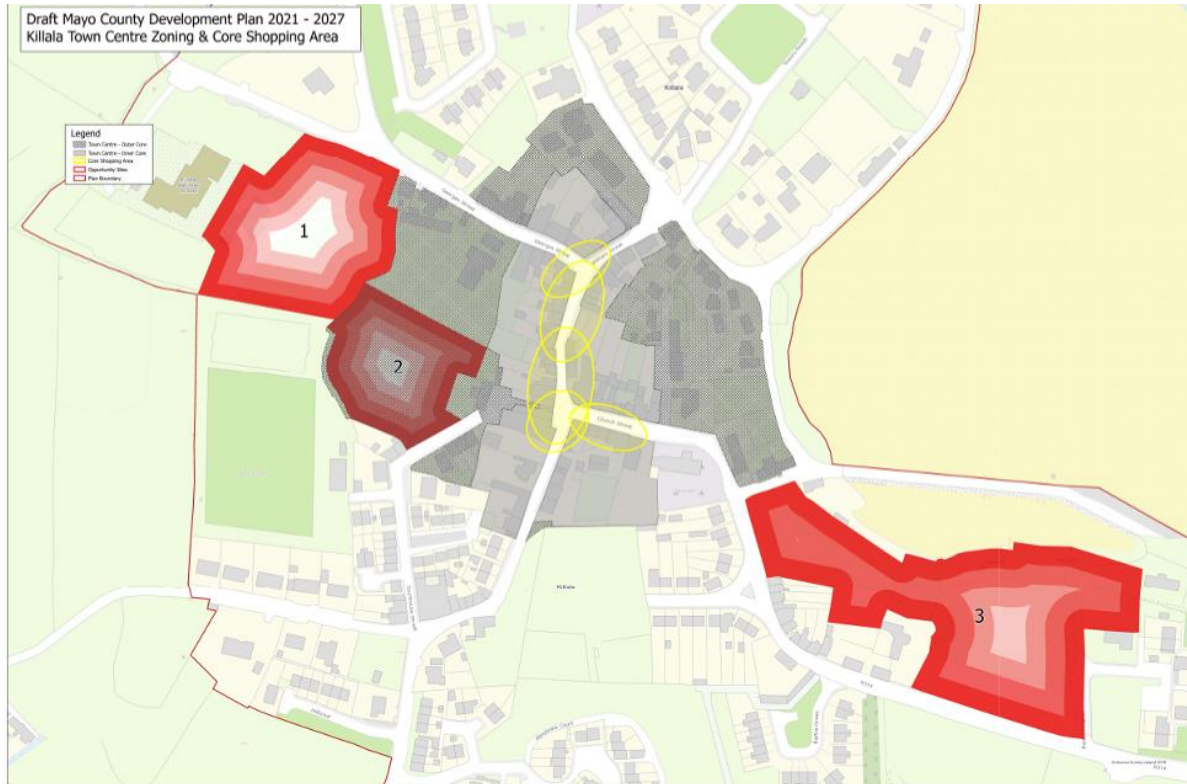
Proposed Amendment Tier III Killala 1		
Section	Heading	Map Ref
Tier III: Self-Sustaining Towns	Killala	KA 2

Remove Opportunity Site 1 from Map KA2 as shown below:



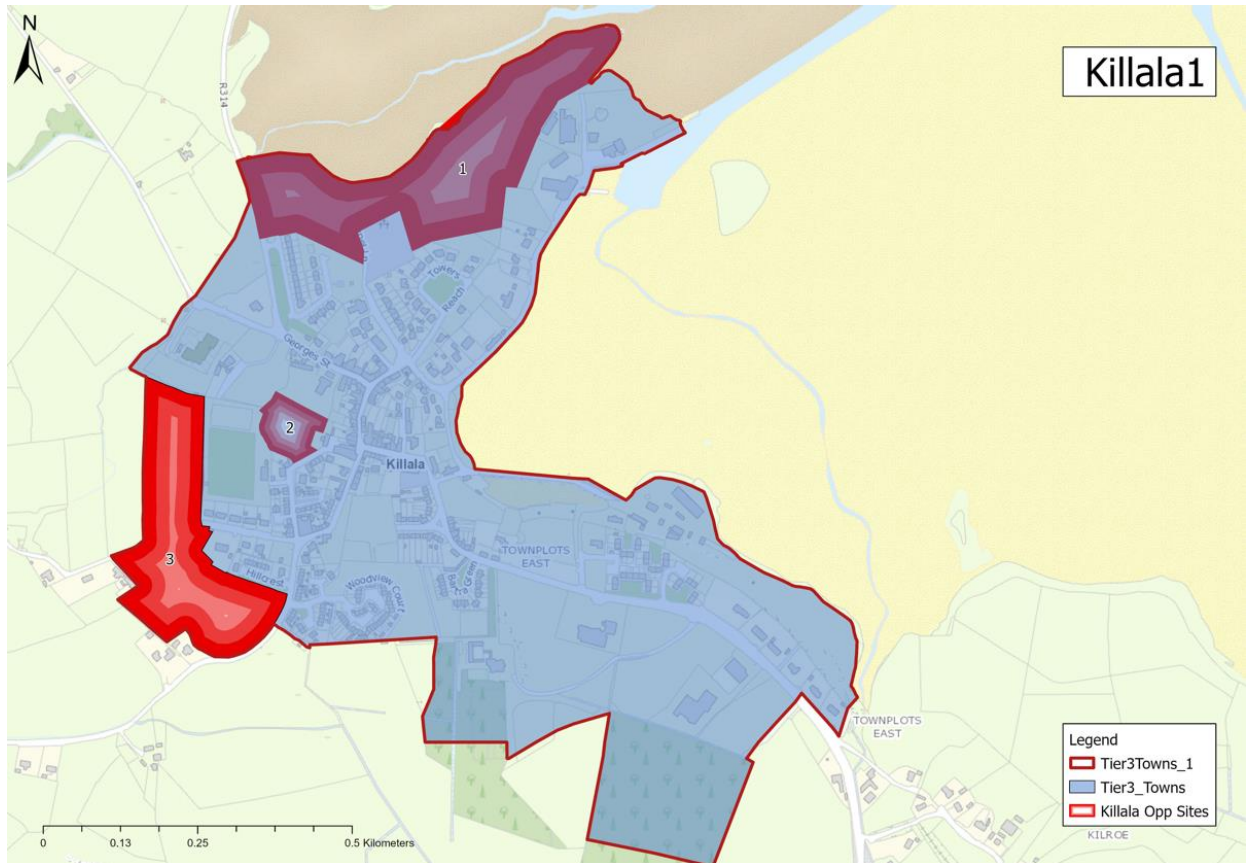
Proposed Amendment Tier III Killala 2		
Section	Heading	Map Ref
Tier III: Self-Sustaining Towns	Killala	KA 2

Remove Opportunity Site 3 from Map KA2 as shown below:



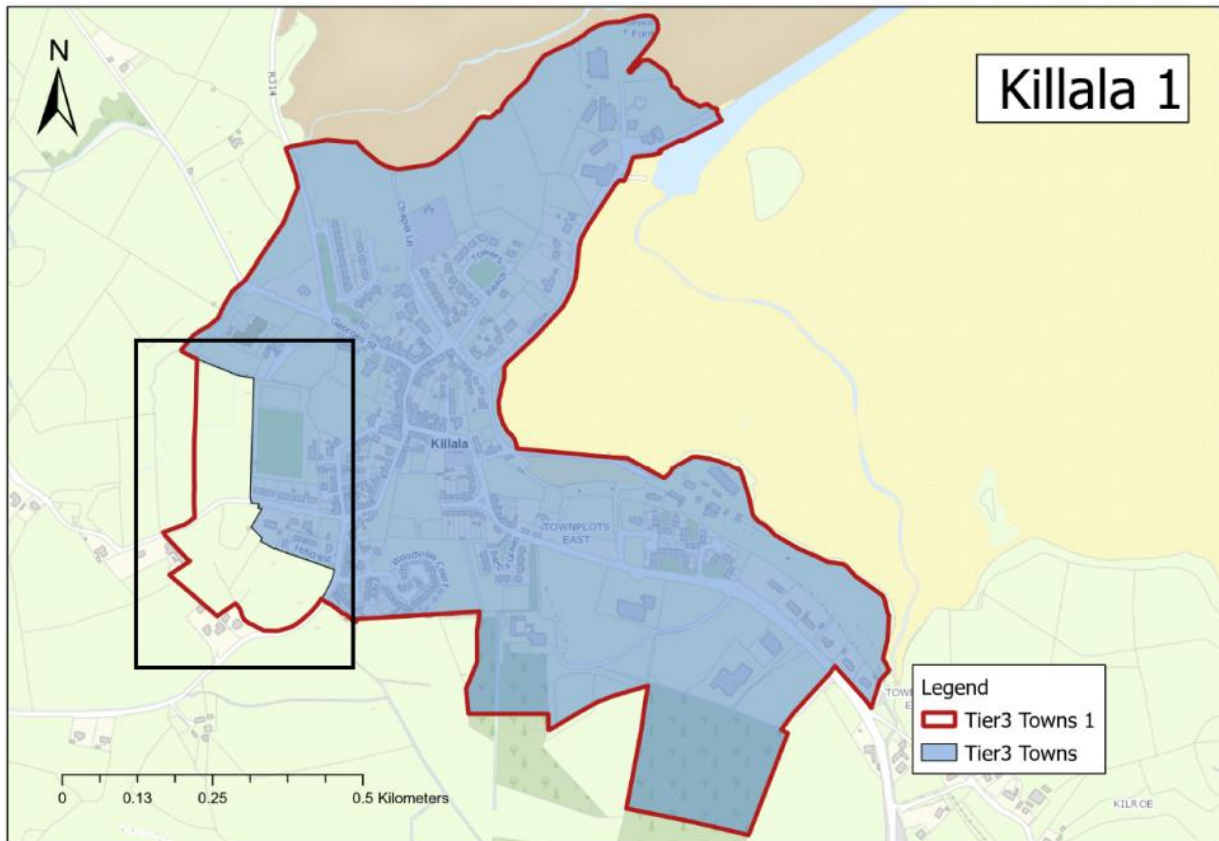
Proposed Amendment Tier III Killala 3		
Section	Heading	Map Ref
Tier III: Self-Sustaining Towns	Killala	KA 2

Create new Opportunity Site 1 on Map KA2 to north of settlement as shown below:



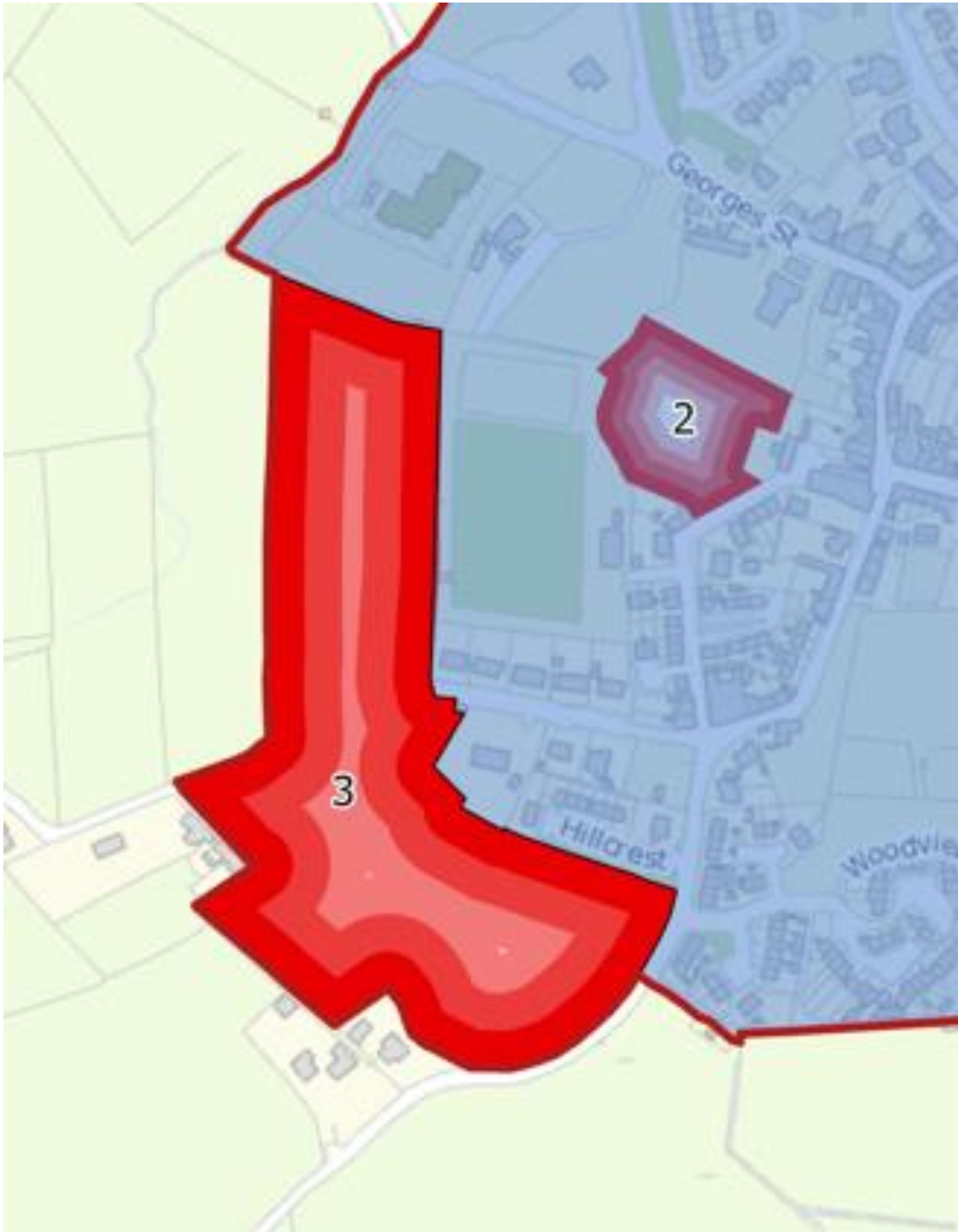
Proposed Amendment Tier III Killala 4		
Section	Heading	Map Ref
Tier III: Self-Sustaining Towns	Killala	KA 1

Extend boundary to the south-west of the settlement as outlined within the black box below and labelled Tier 3 Towns 1:



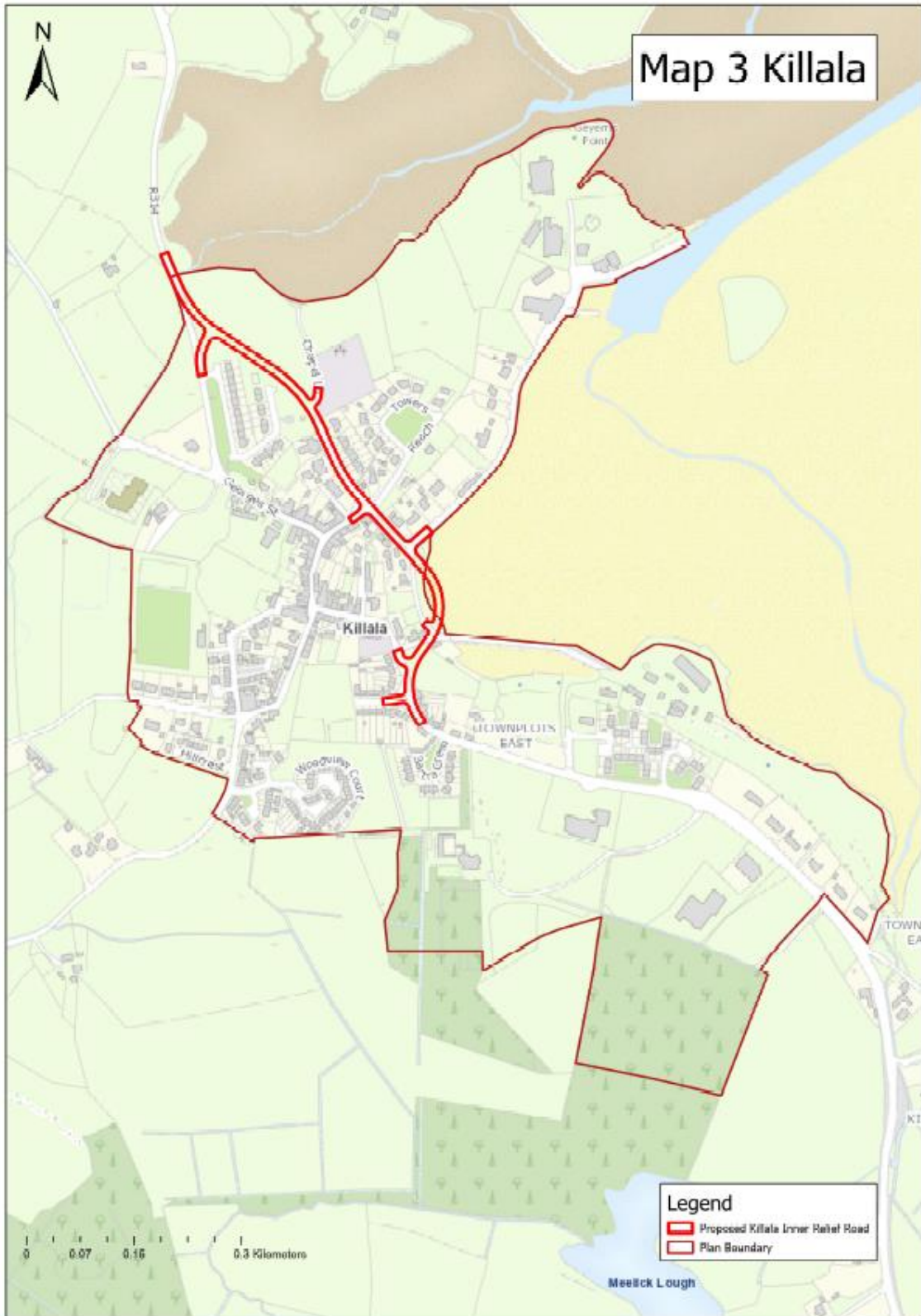
Proposed Amendment Tier III Killala 5		
Section	Heading	Map Ref
Tier III: Self-Sustaining Towns	Killala	KA 1

Create new Opportunity Site 3 to the west of the settlement as shown below:



Section	Heading	Map Ref
Tier III: Self-Sustaining Towns	Killala	KA 3

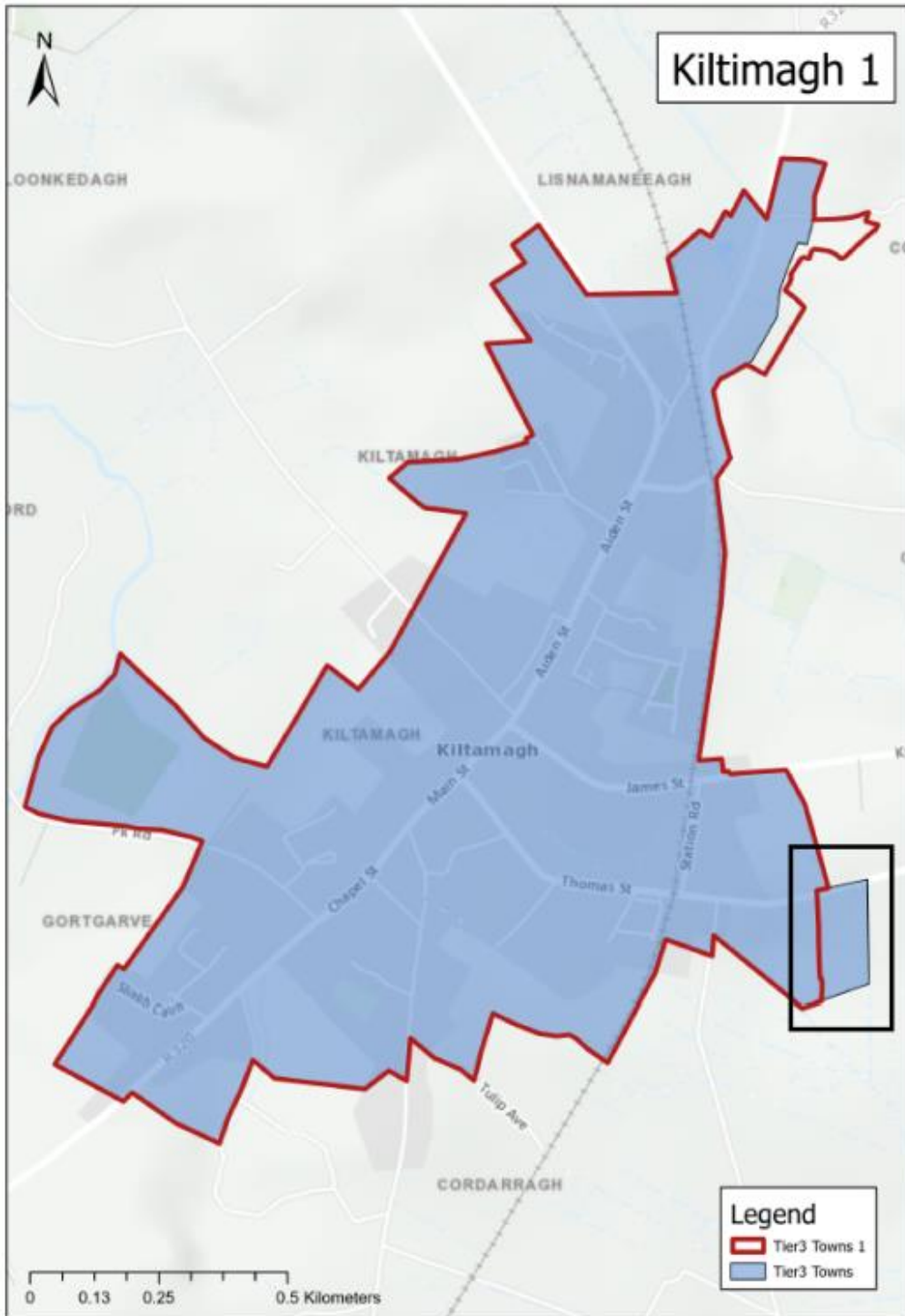
Insert new map showing the Killala Inner Relief Road as shown below:



Tier III: Kiltimagh

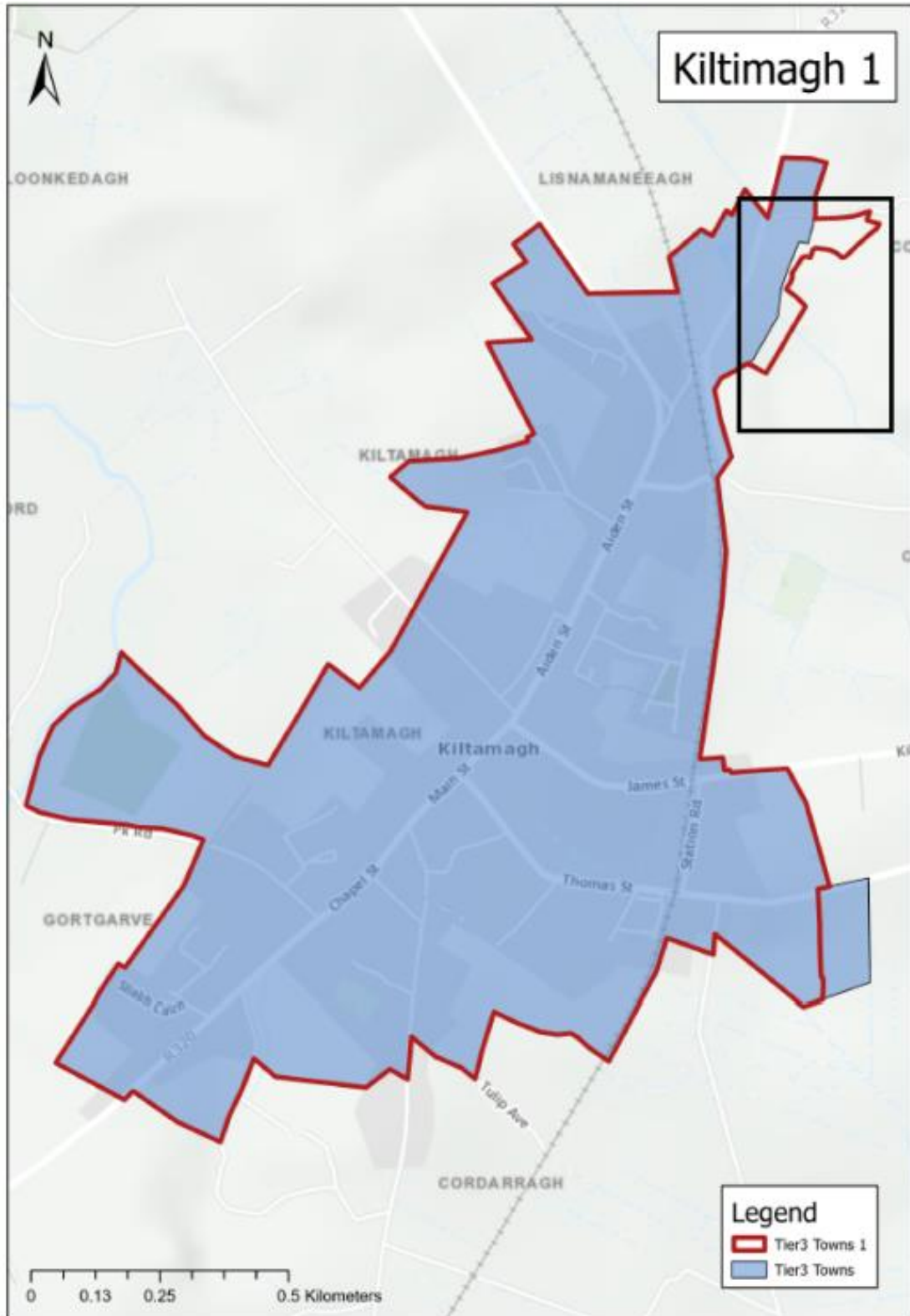
Proposed Amendment Tier III Kilti 1		
Section	Heading	Map Ref
Tier III: Self-Sustaining Towns	Kiltimagh	KH 1

Remove lands to the South-East from Settlement Boundary as illustrated below:



Proposed Amendment Tier III Kilti 2		
Section	Heading	Map Ref
Tier III: Self-Sustaining Towns	Kiltimagh	KH 1

Extend Settlement Boundary to the North-East as illustrated below:



Proposed Amendment Tier III Kilti 3		
Section	Heading	Map Ref
Tier III: Self-Sustaining Towns	Kiltimagh	KH 3

Insert new map showing the proposed Kiltimagh Strategic Links as shown below:



TIER IV Rural Settlements

Tier IV: Ballindine

Proposed Amendment Tier IV BDINE 1		
Section	Heading	Map Ref
Tier IV: Rural Settlements	Ballindine	Ballindine Map 2

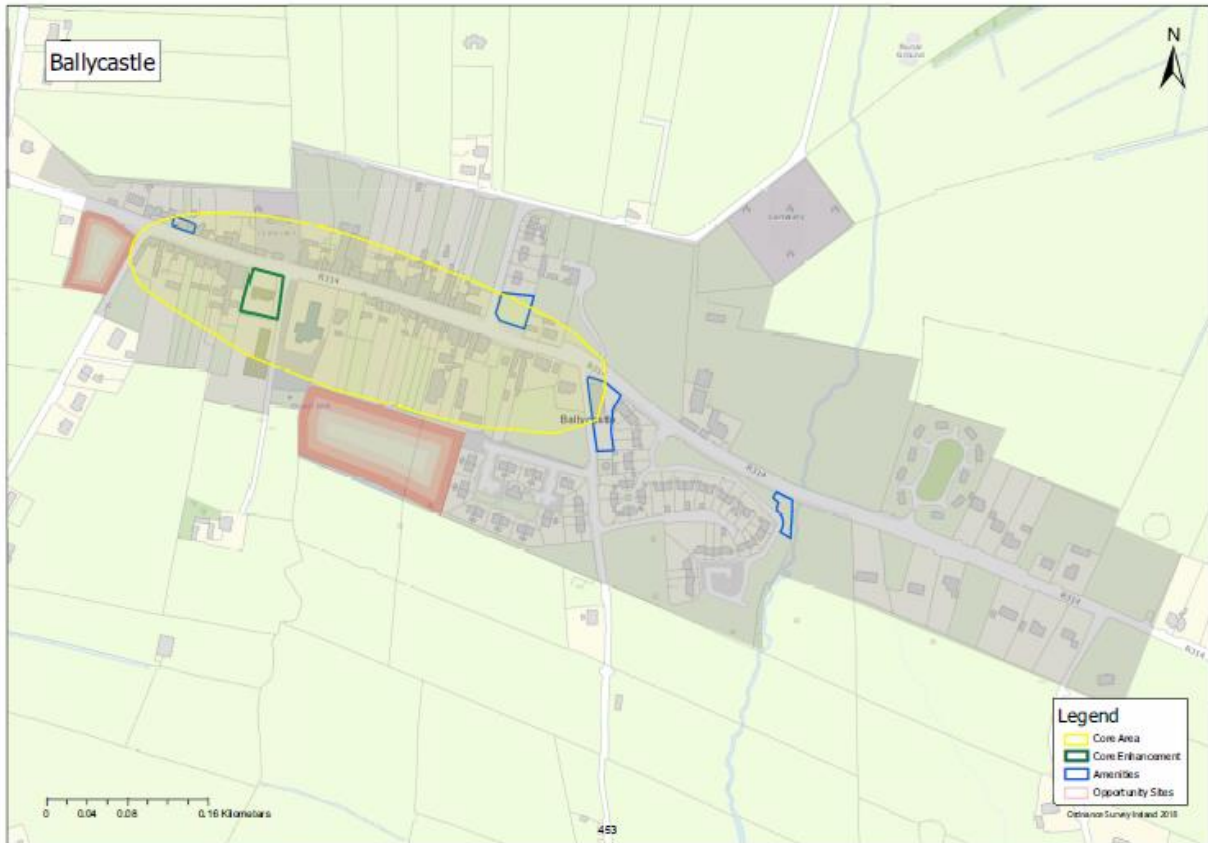
Revise map to illustrate Core Area, Core Enhancements, Amenities & Opportunity Sites as shown below:



Tier IV: Ballycastle

Proposed Amendment Tier IV BCAS 1		
Section	Heading	Map Ref
Tier IV: Rural Settlements	Ballycastle	Ballycastle Map 2

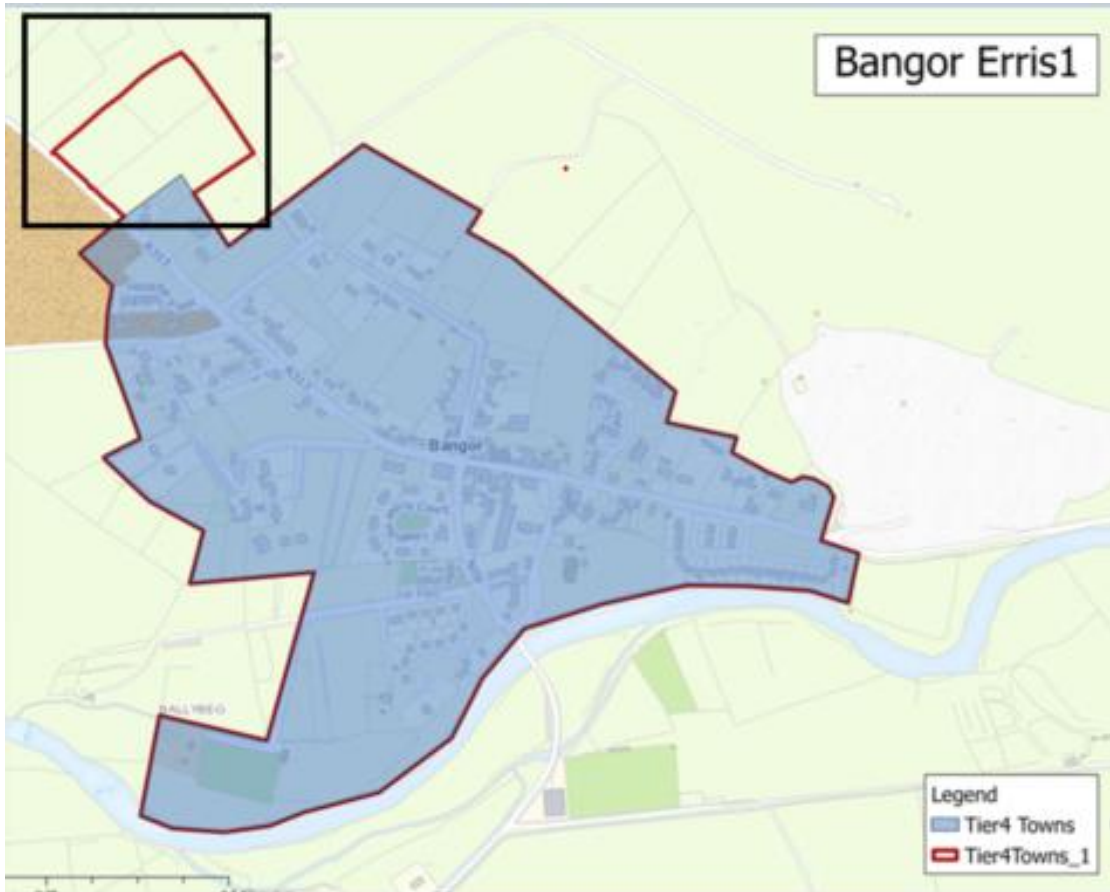
Revise map to illustrate Core Area, Core Enhancements, Amenities & Opportunity Sites as shown below:



Tier IV: Bangor Erris

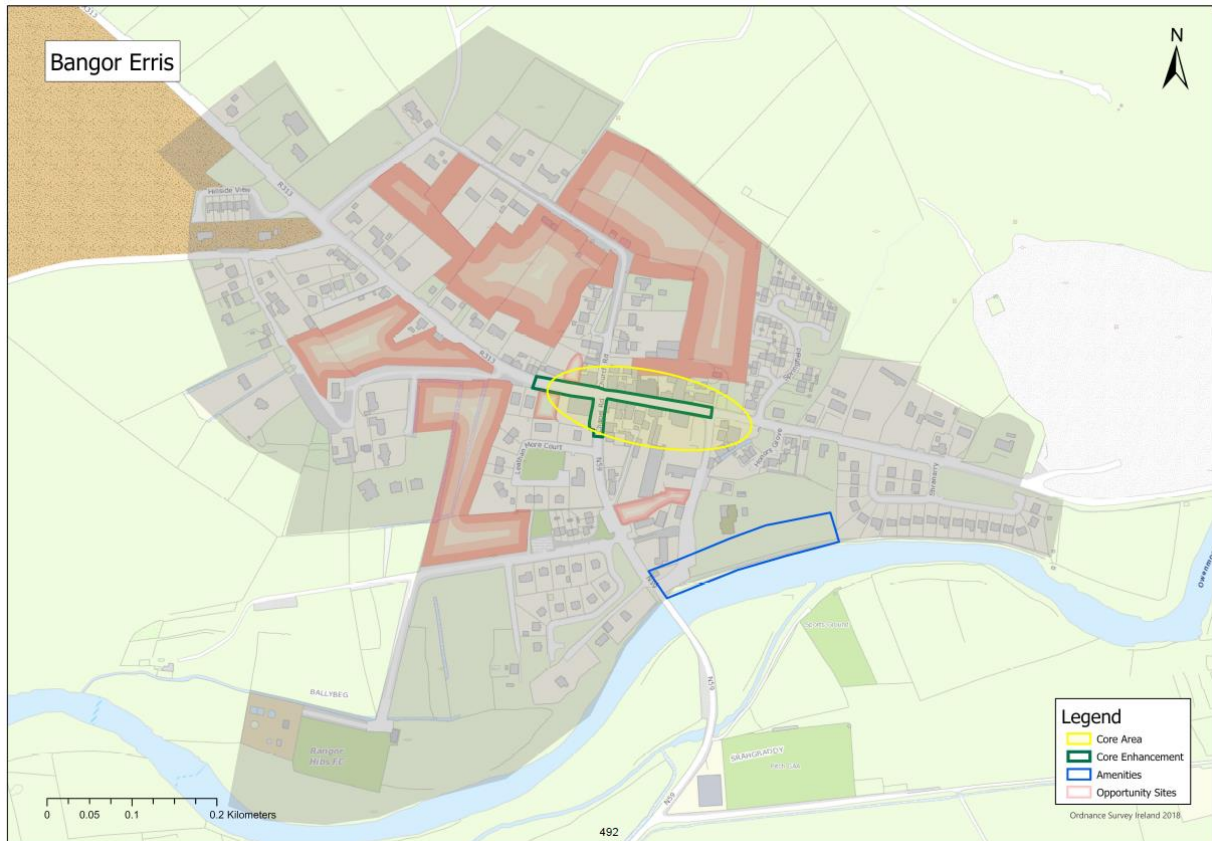
Proposed Amendment Tier IV BER 1		
Section	Heading	Map Ref
Tier IV: Rural Settlements	Bangor Erris	Bangor Erris

Add lands to the North-West of the Settlement Boundary as illustrated below:



Proposed Amendment Tier IV BER 2		
Section	Heading	Map Ref
Tier IV: Rural Settlements	Bangor Erris	Bangor Erris 2

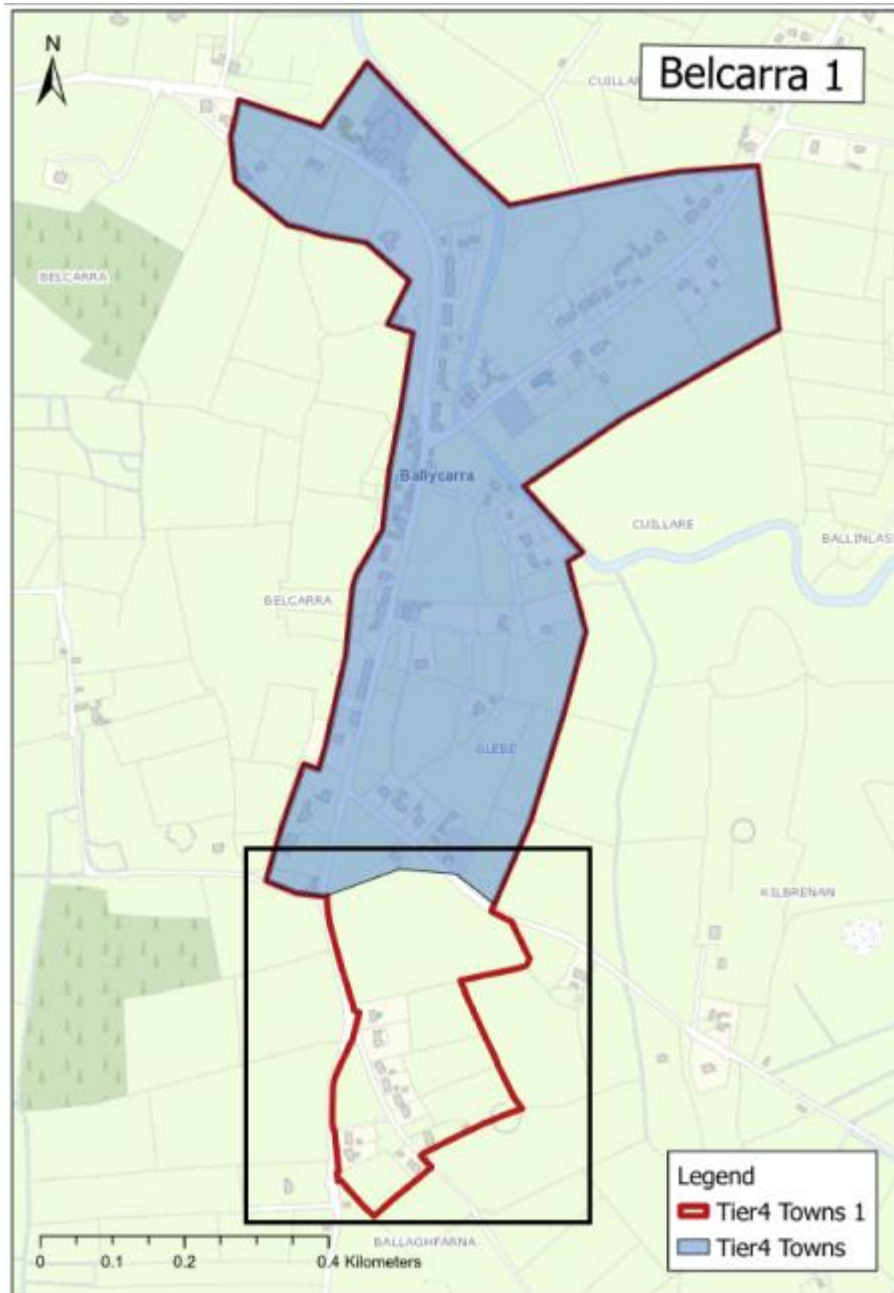
Revise map to illustrate Core Area, Core Enhancements, Amenities & Opportunity Sites as shown below:



Tier IV: Belcarra

Proposed Amendment Tier IV BEL 1		
Section	Heading	Map Ref
Tier IV: Rural Settlements	Belcarra	Belcarra

Extend settlement boundary of Belcarra to include outlined lands as illustrated by the black outlined and labelled Tier 4 Towns 1 below:



Proposed Amendment Tier IV BEL 2		
Section	Heading	Map Ref
Tier IV: Rural Settlements	Belcarra	Belcarra Map 2

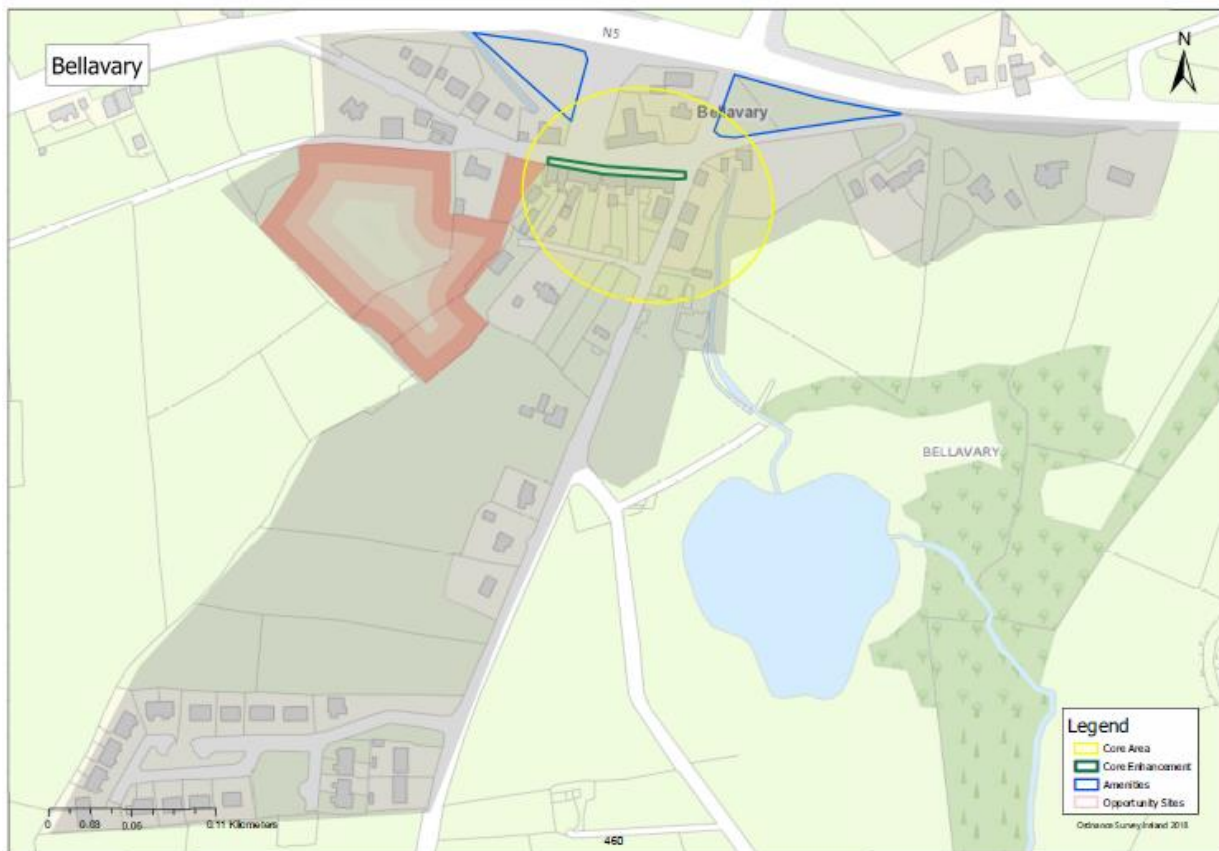
Revise map to illustrate Core Area, Core Enhancements, Amenities & Opportunity Sites as shown below:



Tier IV: Bellyvary

Proposed Amendment Tier IV BEL 1		
Section	Heading	Map Ref
Tier IV: Rural Settlements	Bellyvary	Bellyvary Map 2

Revise map to illustrate Core Area, Core Enhancements, Amenities & Opportunity Sites as shown below:



Tier IV: Bohola

Proposed Amendment Tier IV BOH 1		
Section	Heading	Map Ref
Tier IV: Rural Settlements	Bohola	Bohola Map 2

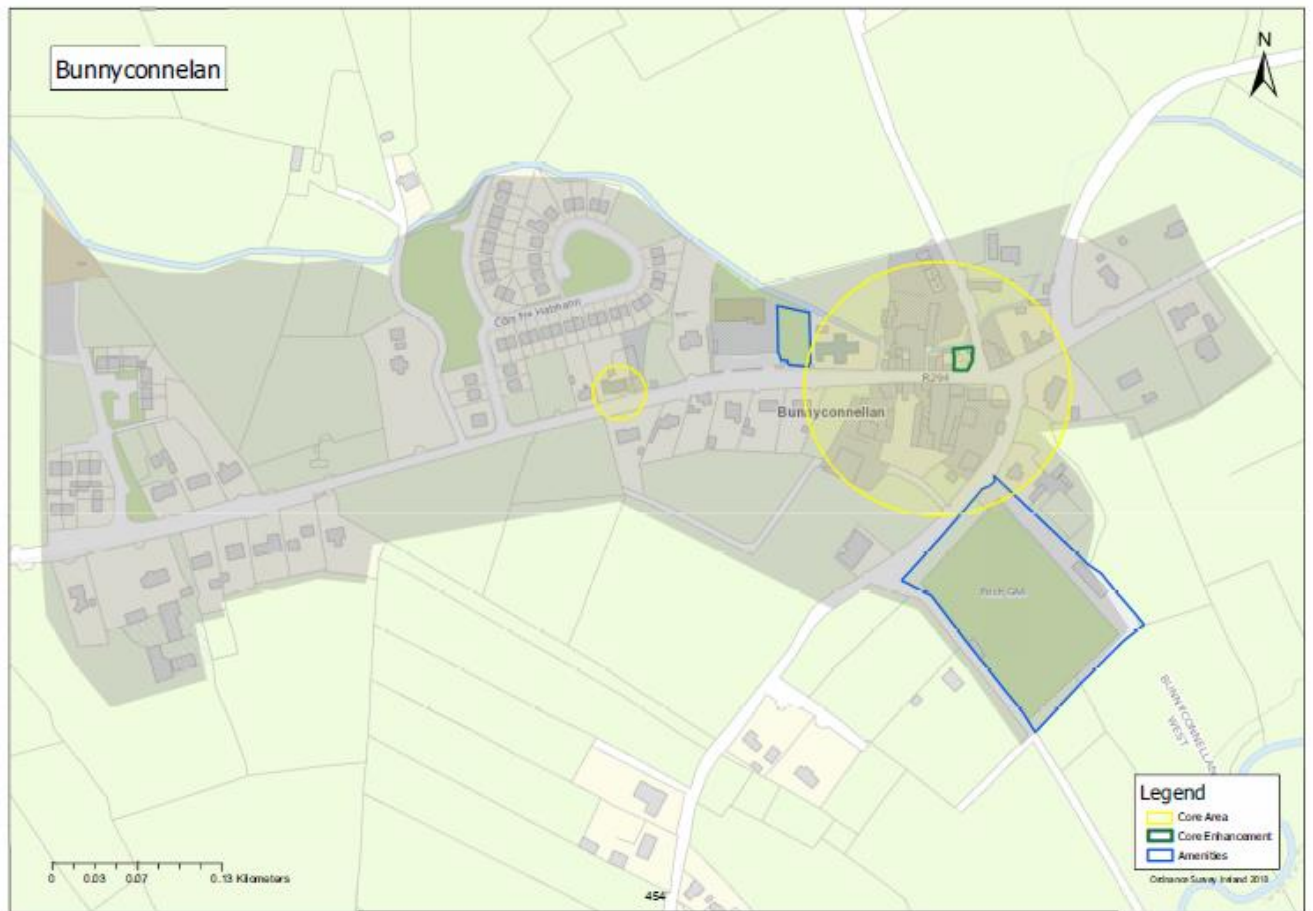
Revise map to illustrate Core Area, Core Enhancements, Amenities & Opportunity Sites as shown below:



Tier IV: Bunnyconnellan

Proposed Amendment Tier IV BOH 1		
Section	Heading	Map Ref
Tier IV: Rural Settlements	Bunnyconnellan	Bunnyconnellan Map 2

Revise map to illustrate Core Area, Core Enhancements, Amenities & Opportunity Sites as shown below:



Tier IV: Cong

Proposed Amendment Tier IV CONG 1		
Section	Heading	Map Ref
Tier IV: Rural Settlements	Cong	Cong Map 2

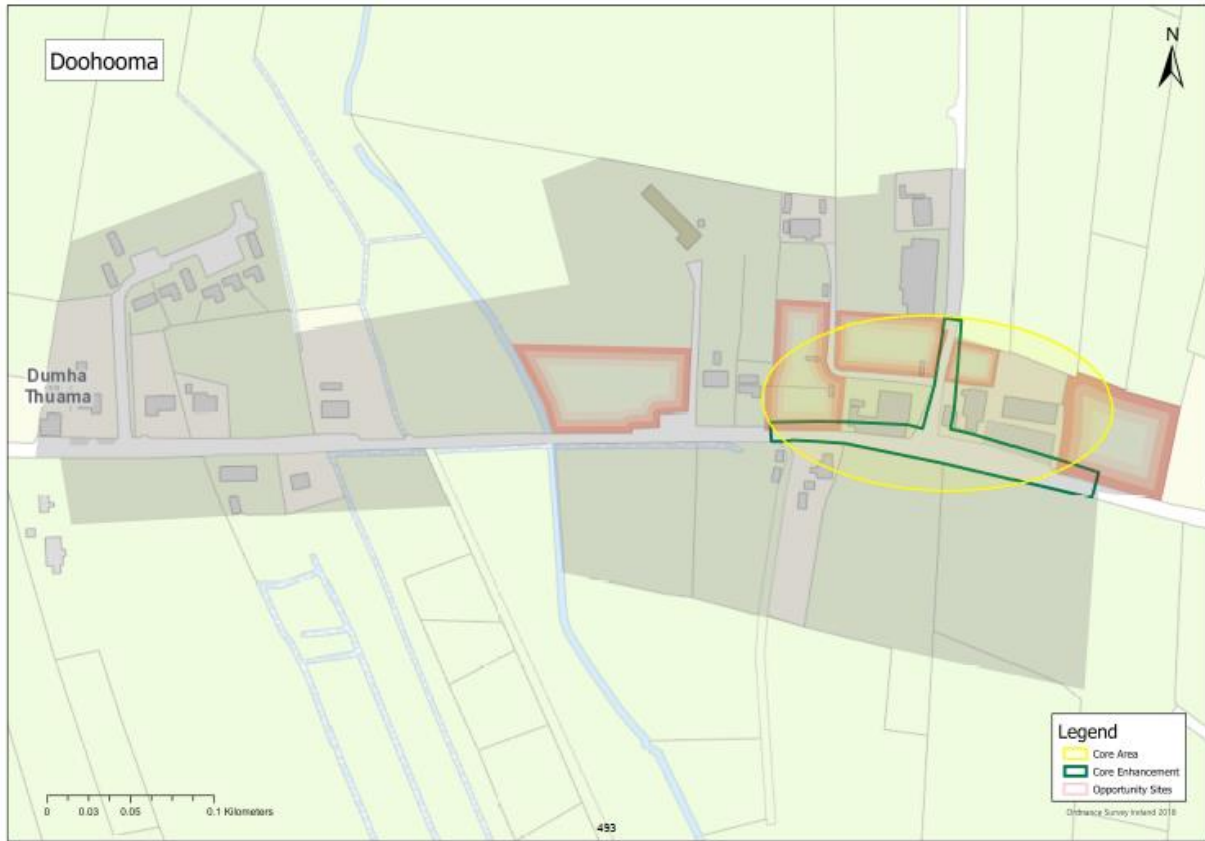
Revise map to illustrate Core Area, Core Enhancements, Amenities & Opportunity Sites as shown below:



Tier IV: Doohoma

Proposed Amendment Tier IV DOO 1		
Section	Heading	Map Ref
Tier IV: Rural Settlements	Doohoma	Doohoma Map 2

Revise map to illustrate Core Area, Core Enhancements, Amenities & Opportunity Sites as shown below:



Tier IV: Gob an Choire (Achill Sound)

Proposed Amendment Tier IV ASO 1		
Section	Heading	Map Ref
Tier IV: Rural Settlements	Gob an Choire (Achill Sound)	Achill Sound Map 2

Revise map to illustrate Core Area, Core Enhancements, Amenities & Opportunity Sites as shown below:



Tier IV: Irishtown

Proposed Amendment Tier IV IRT 1		
Section	Heading	Map Ref
Tier IV: Rural Settlements	Irishtown	Irishtown Map 2

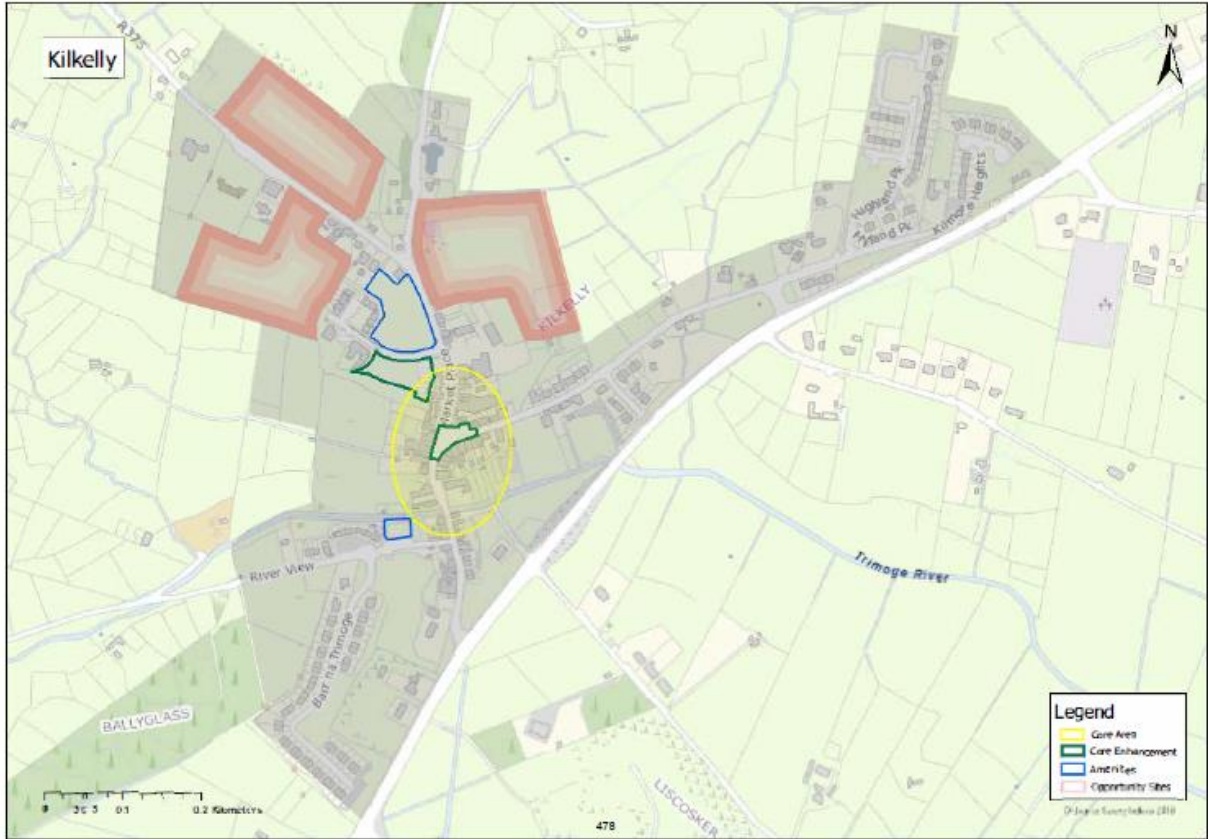
Revise map to illustrate Core Area, Core Enhancements, Amenities & Opportunity Sites as shown below:



Tier IV: Kilkelly

Proposed Amendment Tier IV KKE 1		
Section	Heading	Map Ref
Tier IV: Rural Settlements	Kilkelly	Kilkelly Map 2

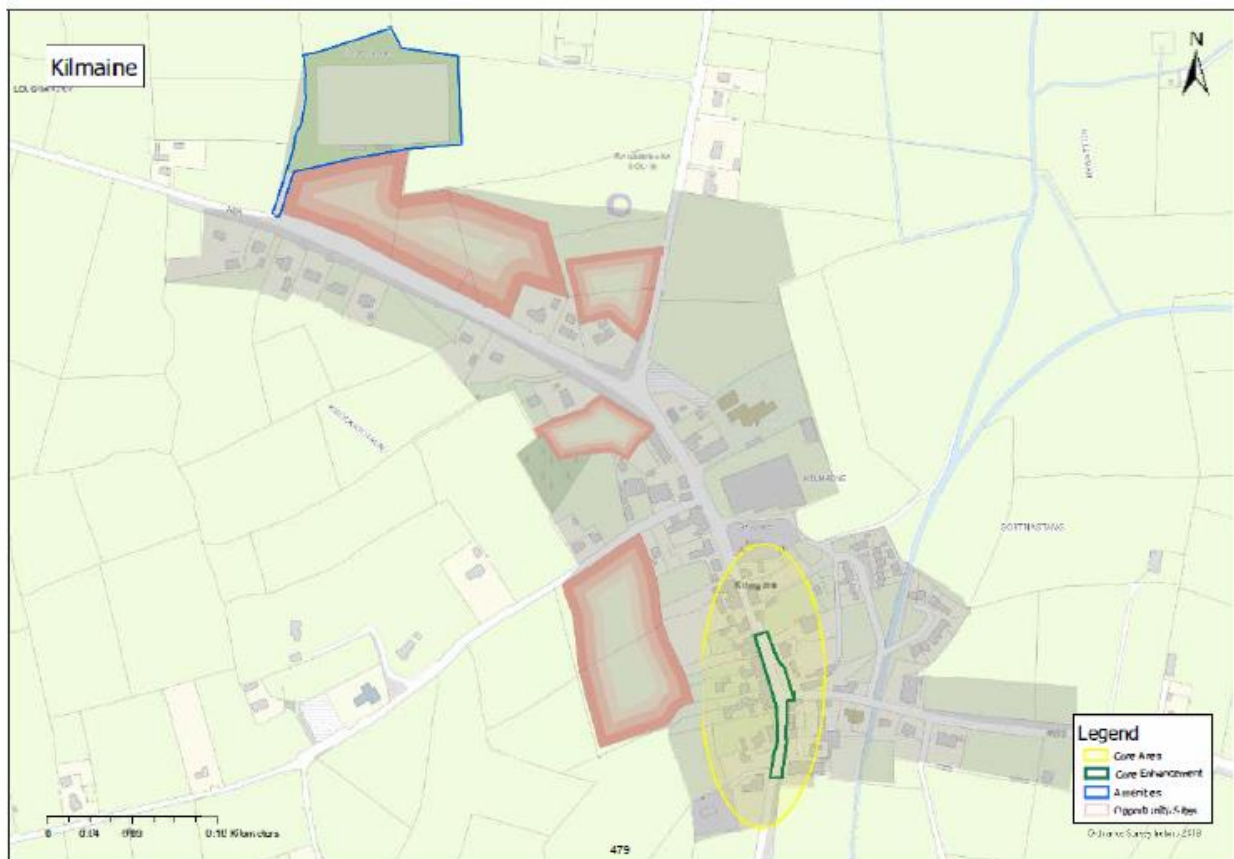
Revise map to illustrate Core Area, Core Enhancements, Amenities & Opportunity Sites as shown below:



Tier IV: Kilmaine

Proposed Amendment Tier IV KILM 1		
Section	Heading	Map Ref
Tier IV: Rural Settlements	Kilmaine	Kilmaine Map 2

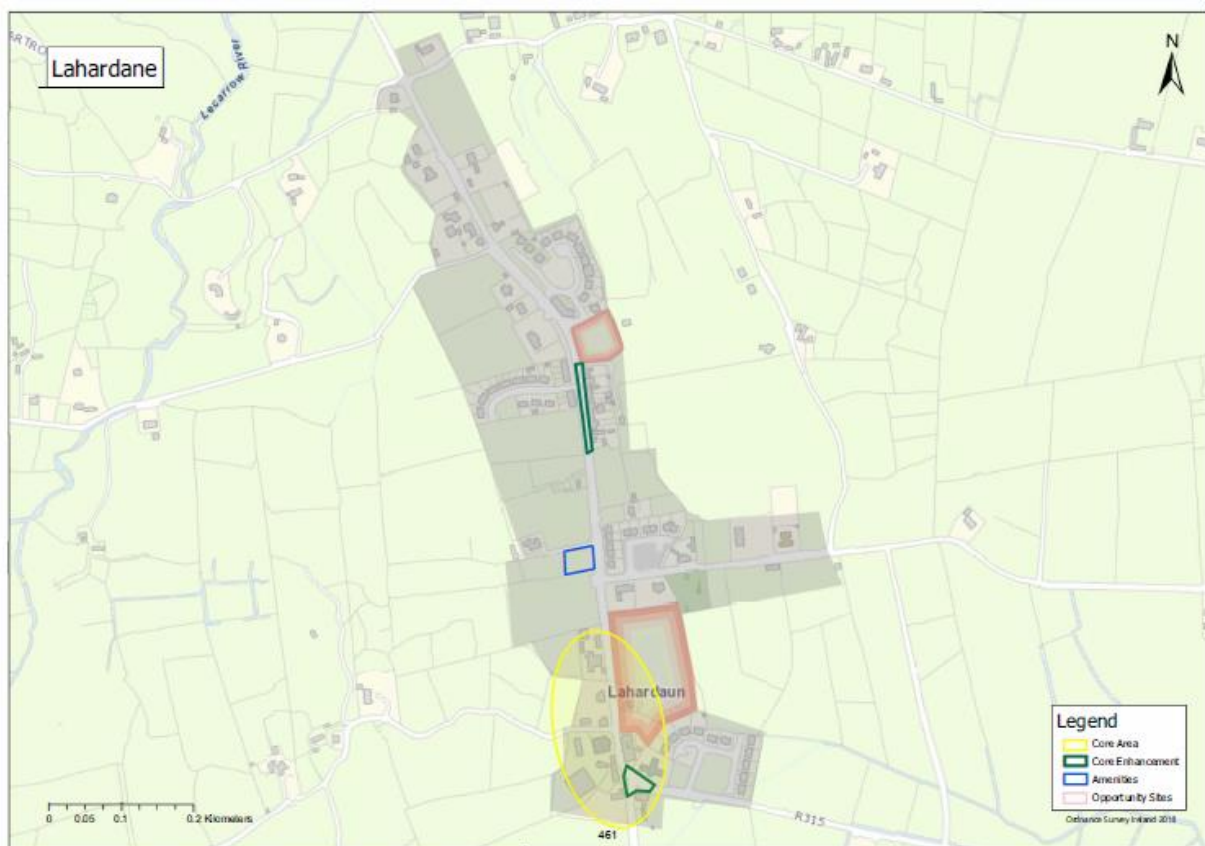
Revise map to illustrate Core Area, Core Enhancements, Amenities & Opportunity Sites as shown below:



Tier IV: Lahardane

Proposed Amendment Tier IV LAH 1		
Section	Heading	Map Ref
Tier IV: Rural Settlements	Lahardane	Lahardane Map 2

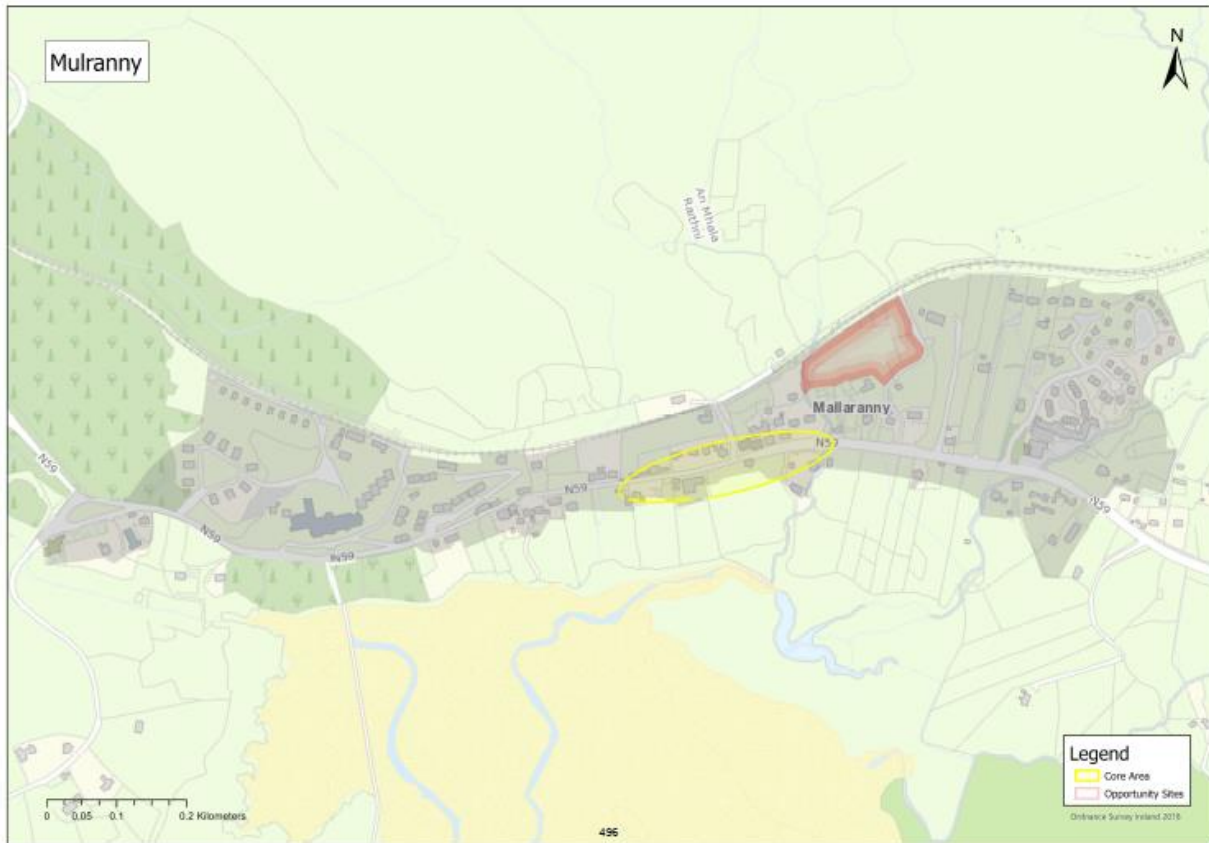
Revise map to illustrate Core Area, Core Enhancements, Amenities & Opportunity Sites as shown below:



Tier IV: Mulranny

Proposed Amendment Tier IV MUL 1		
Section	Heading	Map Ref
Tier IV: Rural Settlements	Mulranny	Mulranny Map 2

Revise map to illustrate Core Area, Core Enhancements, Amenities & Opportunity Sites as shown below:



Tier IV: Shrule

Proposed Amendment Tier IV SHR 1		
Section	Heading	Map Ref
Tier IV: Rural Settlements	Shrule	Shrule Map 2

Revise map to illustrate Core Area, Core Enhancements, Amenities, Boundary Extension (shown in hatching) & Opportunity Sites as shown below:



Tier IV: Turlough

Proposed Amendment Tier IV TUR 1		
Section	Heading	Map Ref
Tier IV: Rural Settlements	Turlough	Turlough Map 2

Revise map to illustrate Core Area, Core Enhancements, Amenities & Opportunity Sites as shown below:



Tier V: Rural Countryside

Tier V: Aghagower

Proposed Amendment Tier V AGH 1		
Section	Heading	Map Ref
Tier V: Rural Countryside	Aghagower	Aghagower Map 2

Revise map to illustrate Core Area, Core Enhancements, Boundary Extension (shown in hatching) & Opportunity Sites as shown below:



Tier V: Aghamore

Proposed Amendment Tier V AGM 1		
Section	Heading	Map Ref
Tier V: Rural Countryside	Aghamore	Aghamore Map 2

Revise map to illustrate Core Area, Core Enhancements, Boundary Extension (shown in hatching), Amenities & Opportunity Sites as shown below:



Tier V: Attymass

Proposed Amendment Tier V ATT 1		
Section	Heading	Map Ref
Tier V: Rural Countryside	Attymass	Attymass Map 2

Revise map to illustrate Boundary Extension(Hatched below), Core Area, Core Enhancements, Amenities & Opportunity Sites as shown below:



Tier V: An Geata More (Binghamstown)

Proposed Amendment Tier V BIN 1		
Section	Heading	Map Ref
Tier V: Rural Countryside	Binghamstown	Binghamstown Map 2

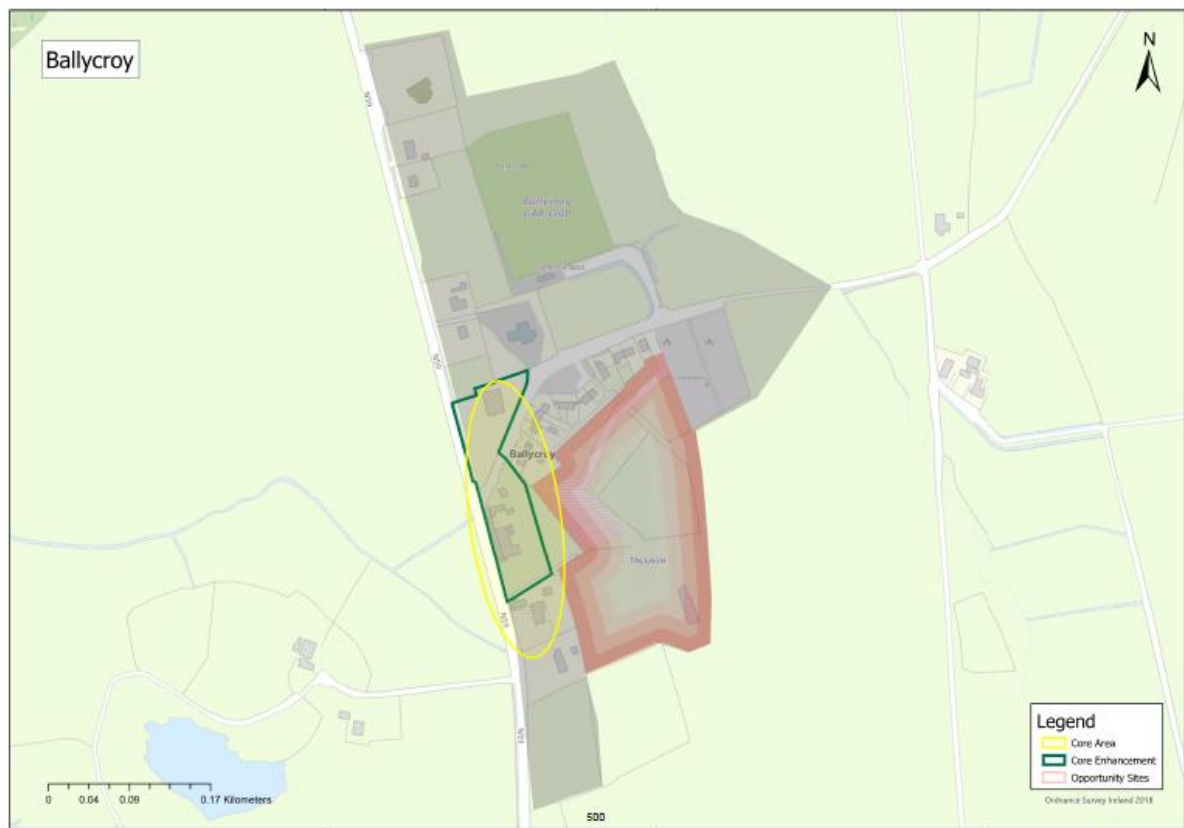
Revise map to illustrate Core Area, Core Enhancements, Amenities & Opportunity Sites as shown below:



Tier V: Ballycroy

Proposed Amendment Tier V Bally 1		
Section	Heading	Map Ref
Tier V: Rural Countryside	Ballycroy	Ballycroy Map 2

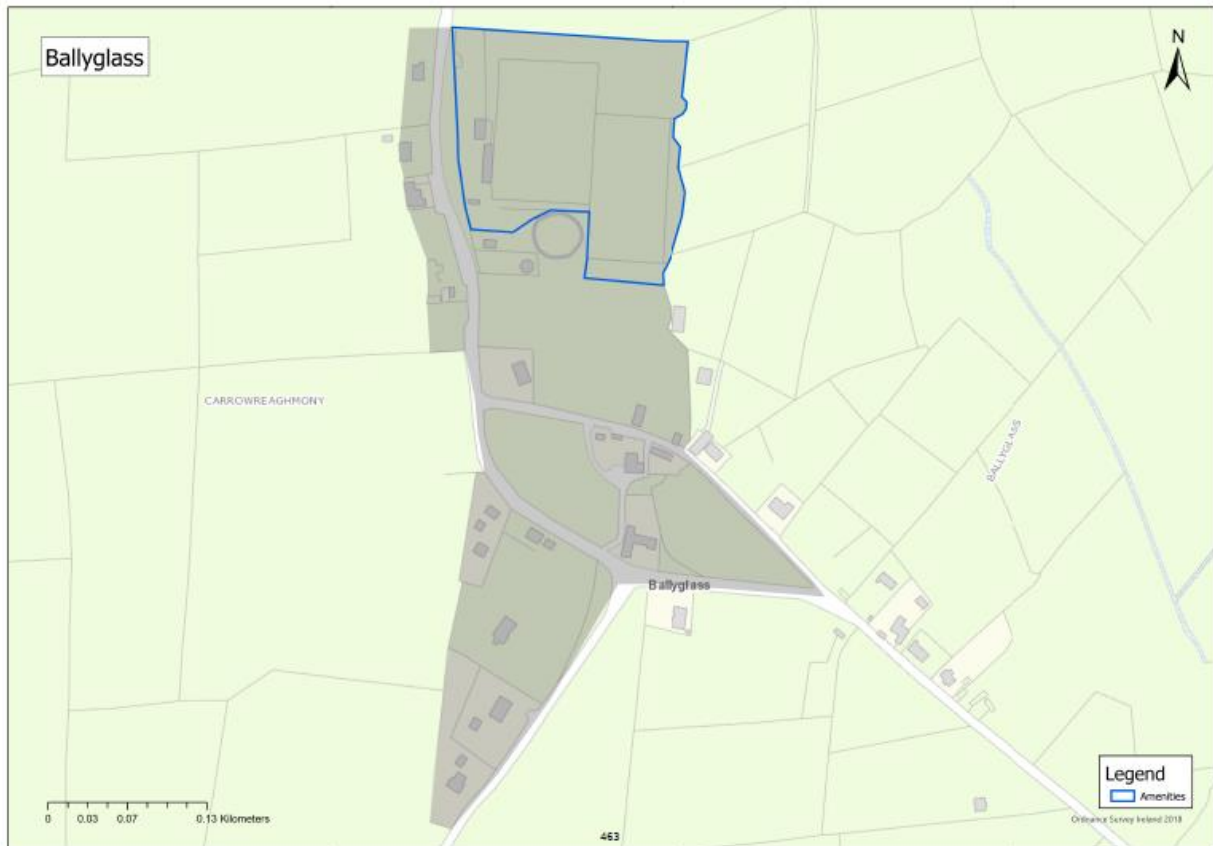
Revise map to illustrate Core Area, Core Enhancements, Amenities & Opportunity Sites as shown below:



Tier V: Ballyglass

Proposed Amendment Tier V BGL 1		
Section	Heading	Map Ref
Tier V: Rural Countryside	Ballyglass	Ballyglass Map 2

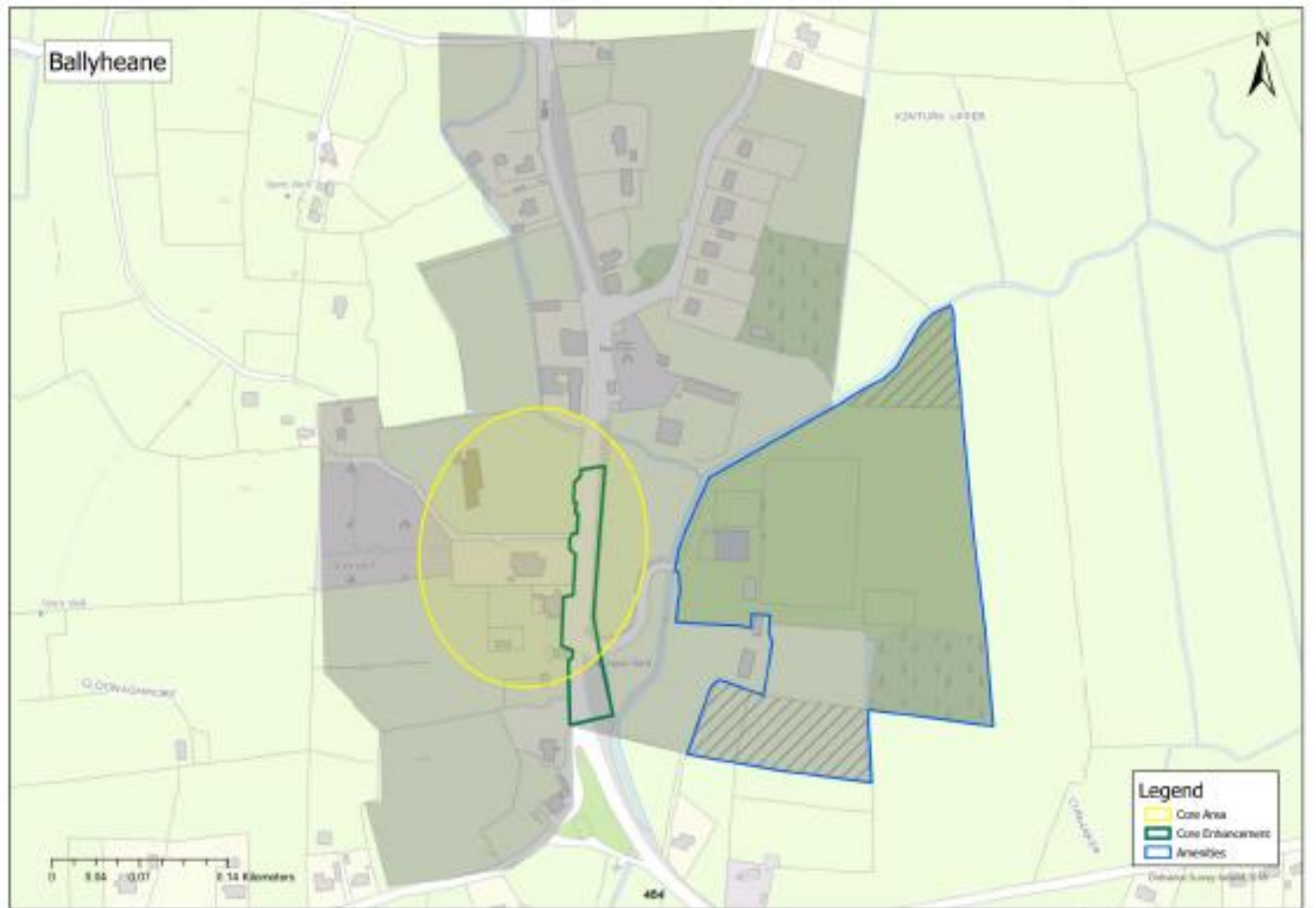
Revise map to illustrate Core Area, Core Enhancements, Amenities & Opportunity Sites as shown below:



Tier V: Ballyheane

Proposed Amendment Tier V BHE 1		
Section	Heading	Map Ref
Tier V: Rural Countryside	Ballyheane	Ballyheane Map 2

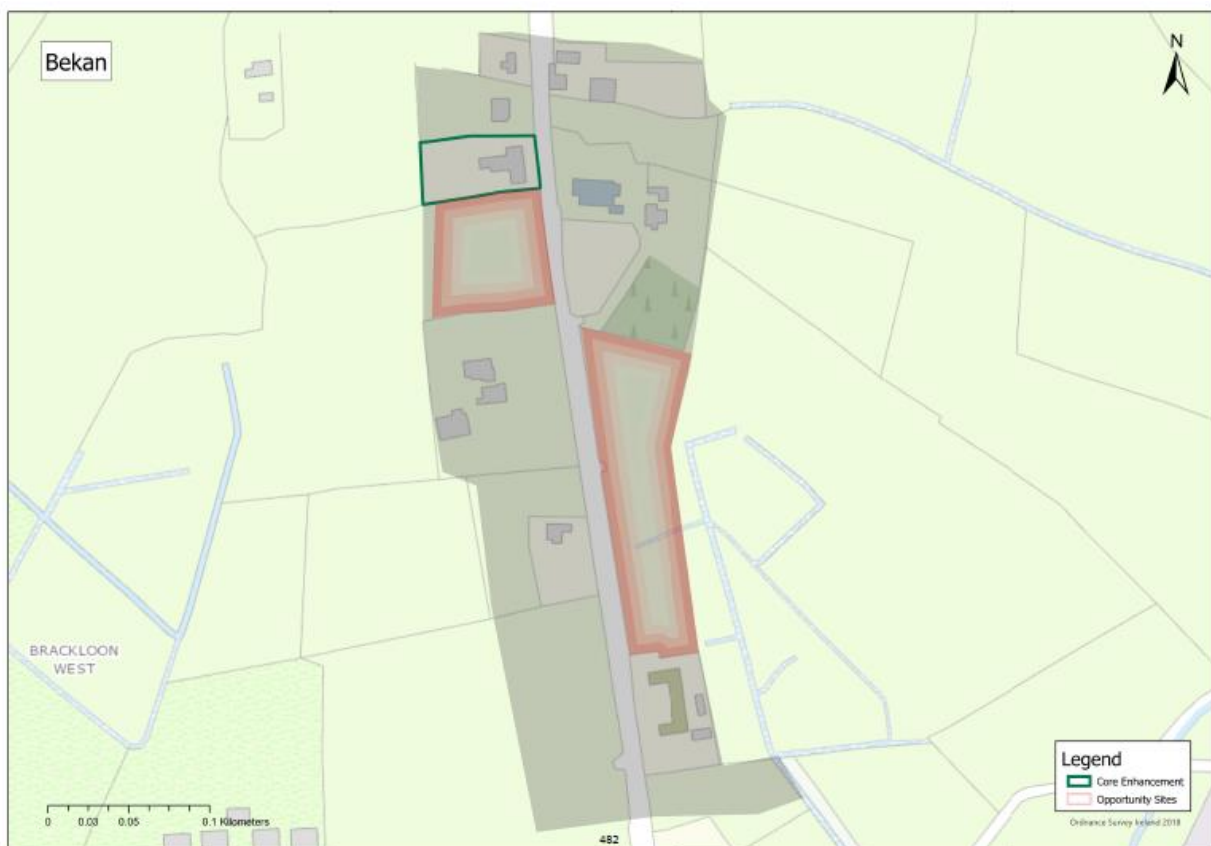
Revise map to illustrate Core Area, Core Enhancements, Amenities & Boundary Extensions (shown in hatching) as shown below:



Tier V: Bekan

Proposed Amendment Tier V BEK 1		
Section	Heading	Map Ref
Tier V: Rural Countryside	Bekan	Bekan Map 2

Revise map to illustrate Core Area, Core Enhancements, Amenities & Opportunity Sites as shown below:



Tier V: Breaffy

Proposed Amendment Tier V BRE 1		
Section	Heading	Map Ref
Tier V: Rural Countryside	Breaffy	Breaffy Map 2

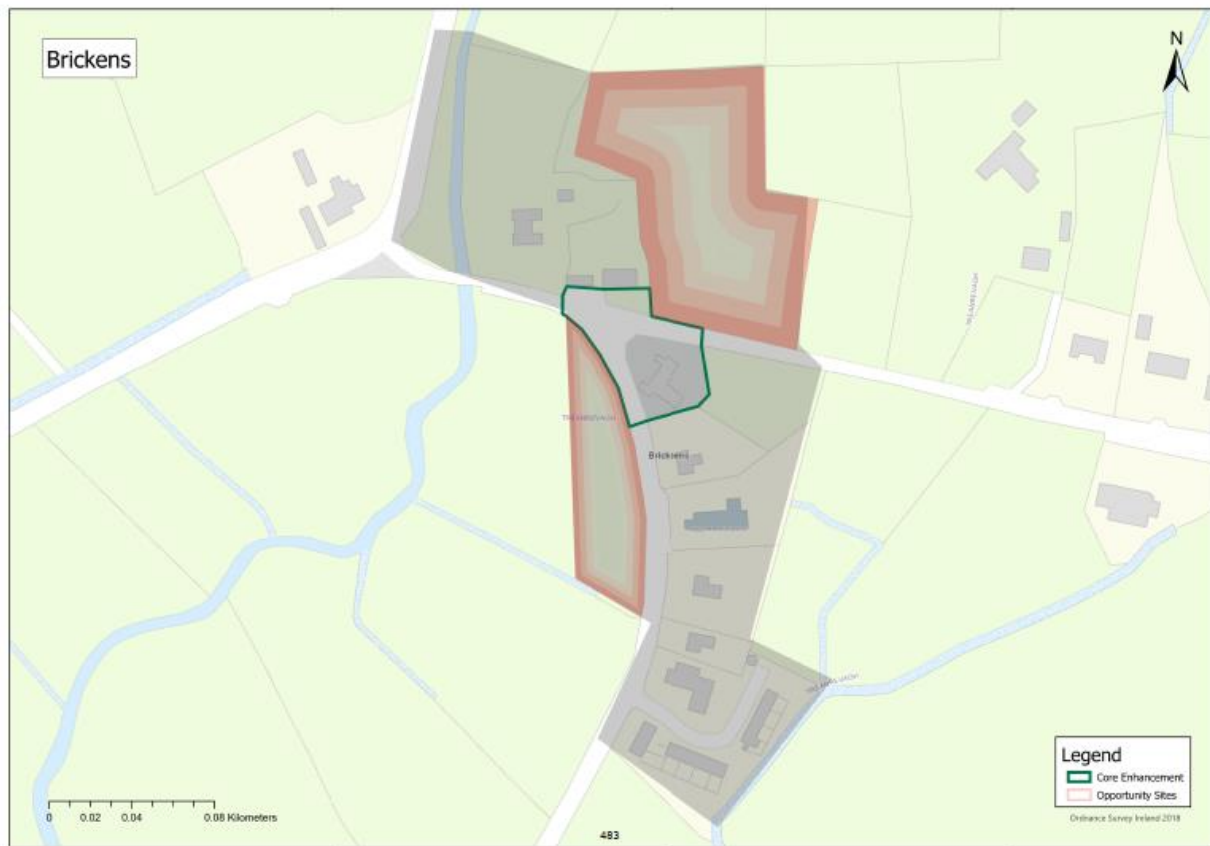
Revise map to illustrate Core Area, Core Enhancements, Amenities & Opportunity Sites as shown below:



Tier V: Brickens

Proposed Amendment Tier V BRI 1		
Section	Heading	Map Ref
Tier V: Rural Countryside	Brickens	Brickens Map 2

Revise map to illustrate Core Area, Core Enhancements, Amenities & Opportunity Sites as shown below:



Tier V: Carnacon

Proposed Amendment Tier V CAR 1		
Section	Heading	Map Ref
Tier V: Rural Countryside	Brickens	Brickens Map 2

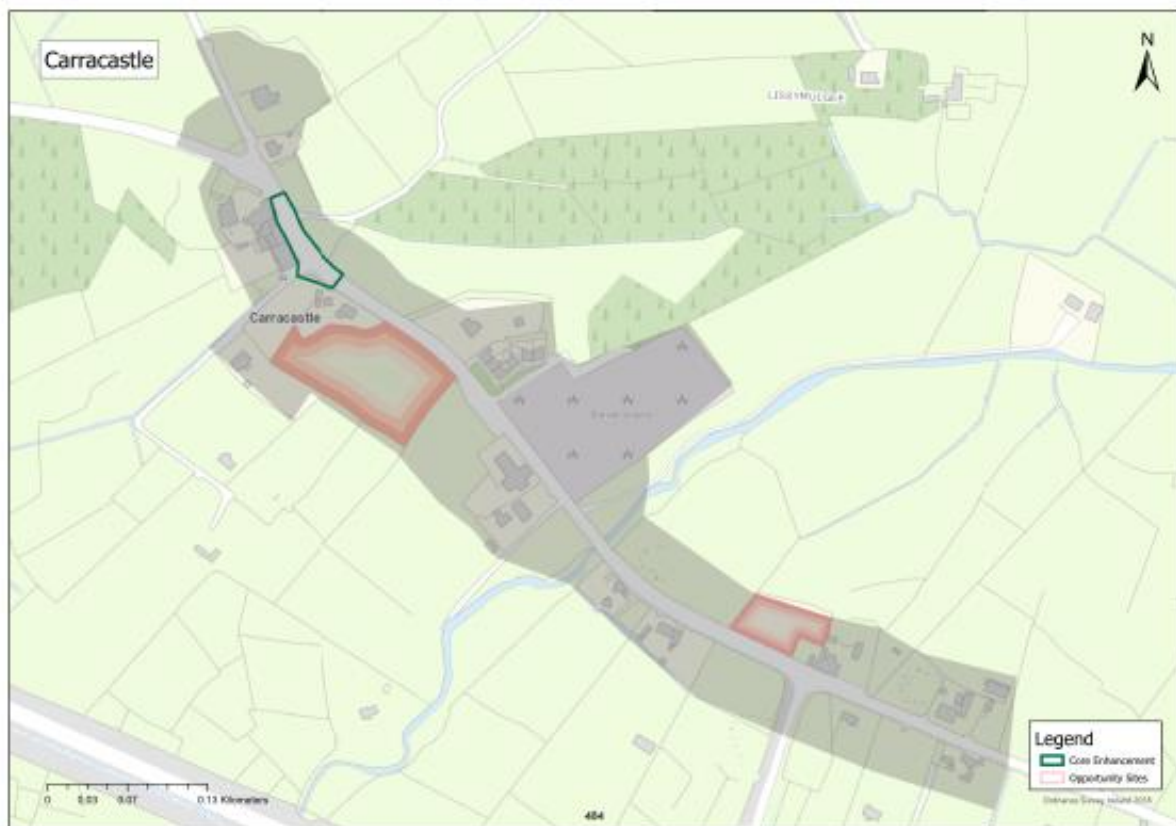
Revise map to illustrate Core Area, Core Enhancements, Amenities & Opportunity Sites as shown below:



Tier V: Carracastle

Proposed Amendment Tier V CLE 1		
Section	Heading	Map Ref
Tier V: Rural Countryside	Carracastle	Carracastle Map 2

Revise map to illustrate Core Area, Core Enhancements, Amenities & Opportunity Sites as shown below:



Tier V: Carrowteige

Proposed Amendment Tier V CGE 1		
Section	Heading	Map Ref
Tier V: Rural Countryside	Carrowteige	Carrowteige Map 2

Revise map to illustrate Core Area, Core Enhancements, Amenities & Opportunity Sites as shown below:



Tier V: Corclough

Proposed Amendment Tier V CGH 1		
Section	Heading	Map Ref
Tier V: Rural Countryside	Corclough	Corclough Map 2

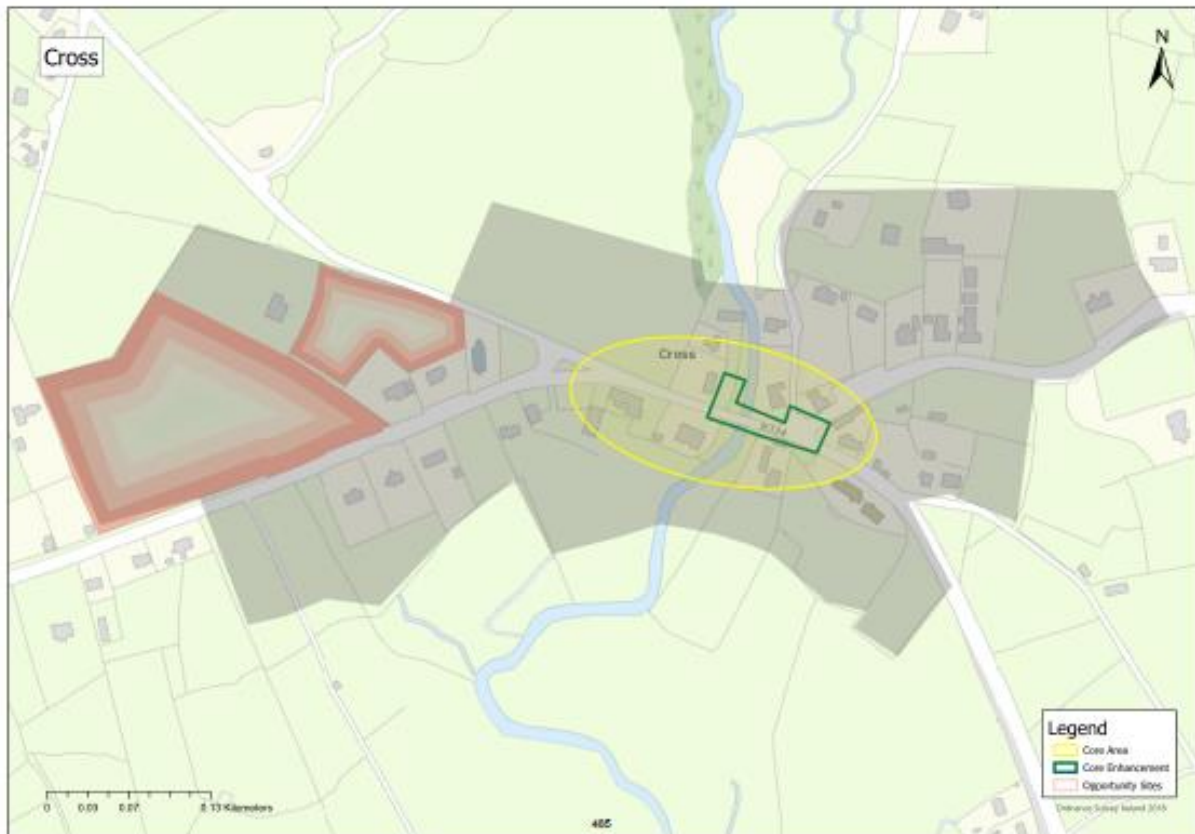
Revise map to illustrate Core Area, Core Enhancements & Opportunity Sites as shown below:



Tier V: Cross

Proposed Amendment Tier V CRS 1		
Section	Heading	Map Ref
Tier V: Rural Countryside	Cross	Cross Map 2

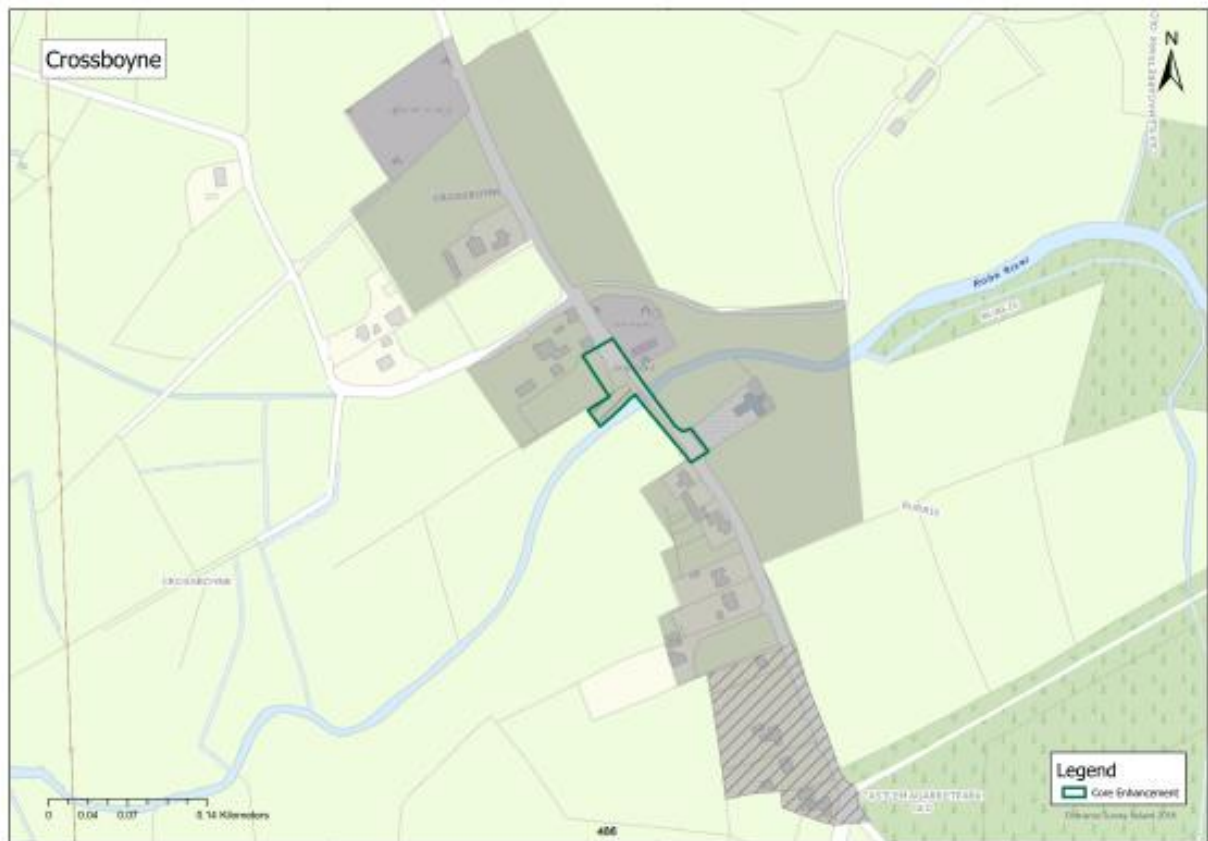
Revise map to illustrate Core Area, Core Enhancements, Amenities & Opportunity Sites as shown below:



Tier V: Crossboyne

Proposed Amendment Tier V CBE 1		
Section	Heading	Map Ref
Tier V: Rural Countryside	Crossboyne	Crossboyne Map 2

Revise map to illustrate, Core Enhancement and boundary extension to south.



Tier V: Dugort

Proposed Amendment Tier V DUG 1		
Section	Heading	Map Ref
Tier V: Rural Countryside	Dugort	Dugort Map 2

Revise map to illustrate Core Area, Core Enhancements & Opportunity Sites as shown below:



Tier V: Eachleim (Aghleam)

Proposed Amendment Tier V EAC 1		
Section	Heading	Map Ref
Tier V: Rural Countryside	Aghleam	Aghleam Map 2

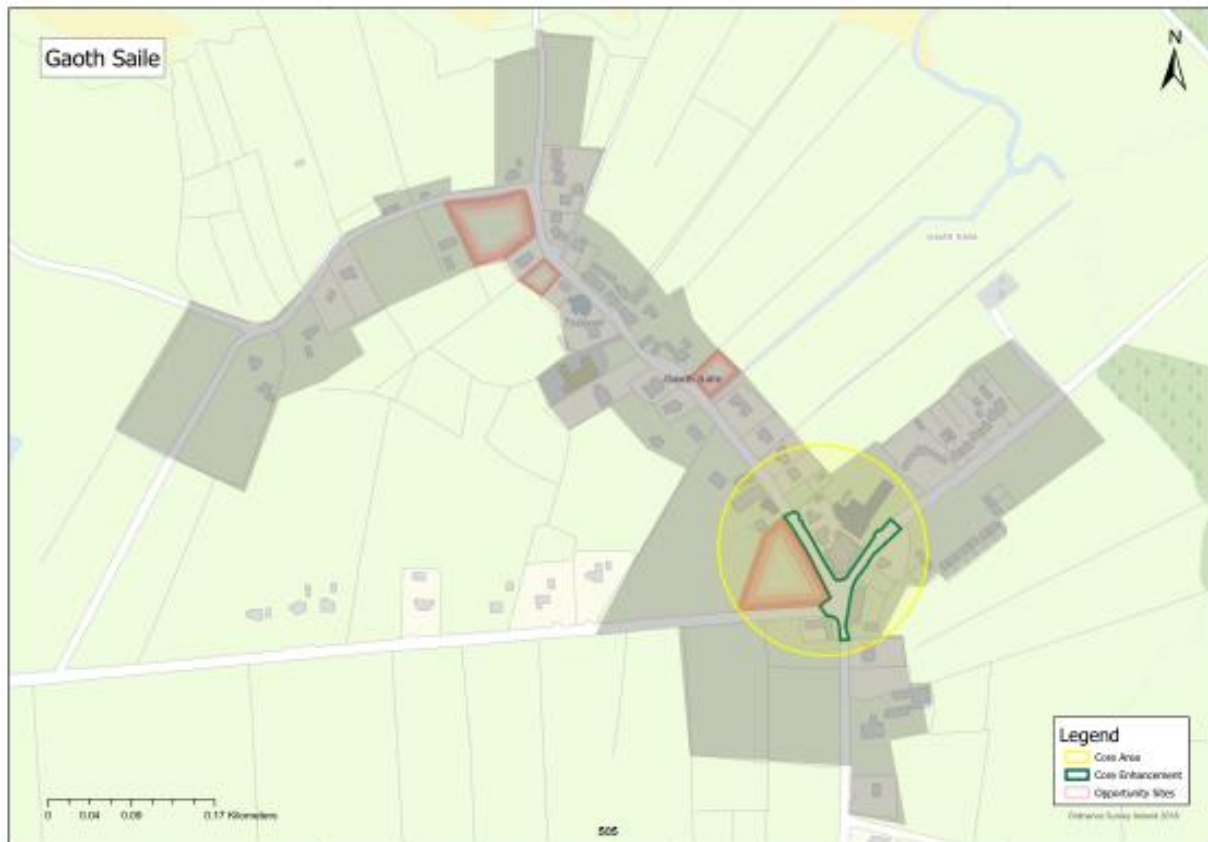
Revise map to illustrate Core Area, Core Enhancements, Amenities & Opportunity Sites as shown below:



Tier V: Gaoth Saile (Geesala)

Proposed Amendment Tier V GEE 1		
Section	Heading	Map Ref
Tier V: Rural Countryside	Geesala	Geesala Map 2

Revise map to illustrate Core Area, Core Enhancements, Amenities & Opportunity Sites as shown below:



Tier V: Glenamoy

Proposed Amendment Tier V GLEN 1		
Section	Heading	Map Ref
Tier V: Rural Countryside	Glenamoy	Glenamoy Map 2

Revise map to illustrate Core Enhancements & Opportunity Site as shown below:



Tier V: Glenhest/Cloondaff

Proposed Amendment Tier V GST 1		
Section	Heading	Map Ref
Tier V: Rural Countryside	Glenhest	Glenhest Map 2

Revise map to illustrate Core Area & Core Enhancement.as shown below:



Tier V: Glenisland

Proposed Amendment Tier V GIL 1		
Section	Heading	Map Ref
Tier V: Rural Countryside	Glenisland	Glenisland Map 2

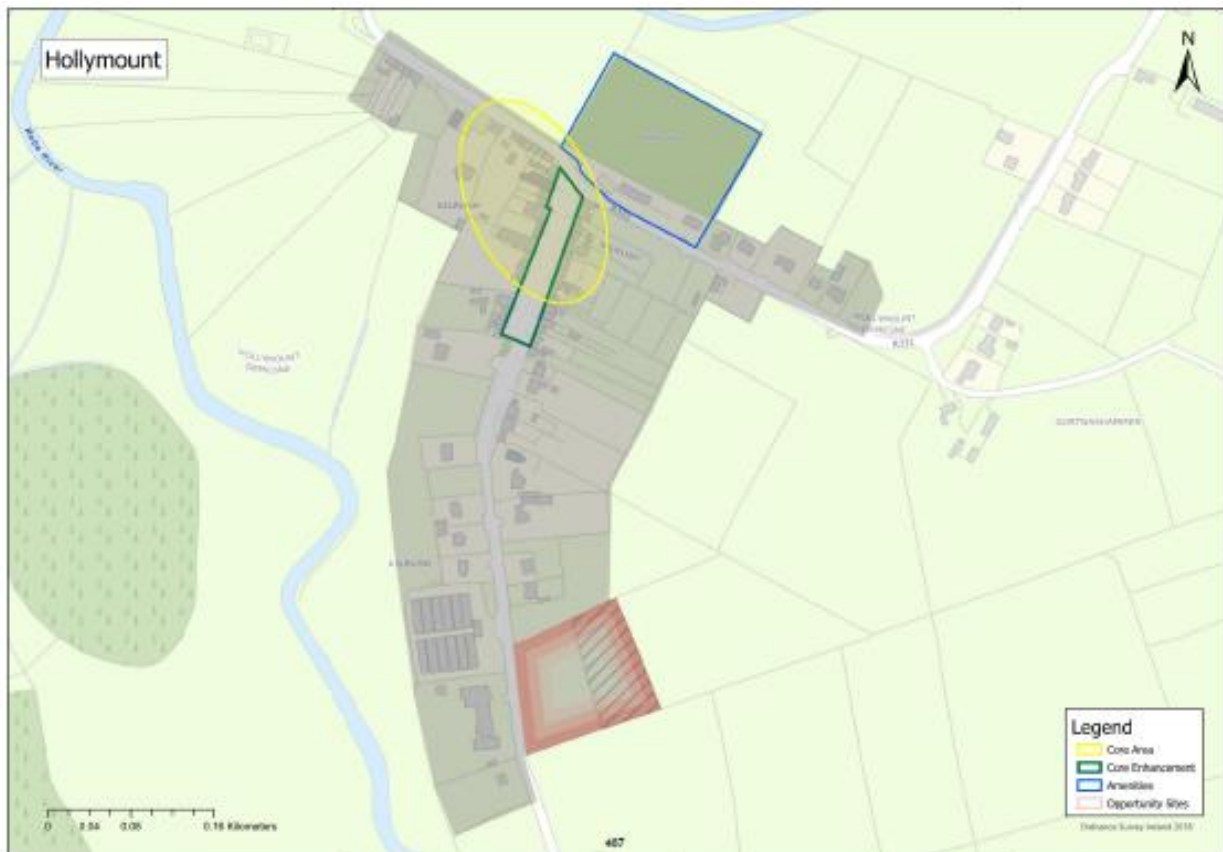
Revise map to illustrate Core Area, Core Enhancements, Boundary Extension (shown in hatching) & Opportunity Site as shown below:



Tier V: Hollymount

Proposed Amendment Tier V HOL 1		
Section	Heading	Map Ref
Tier V: Rural Countryside	Hollymount	Hollymount Map 2

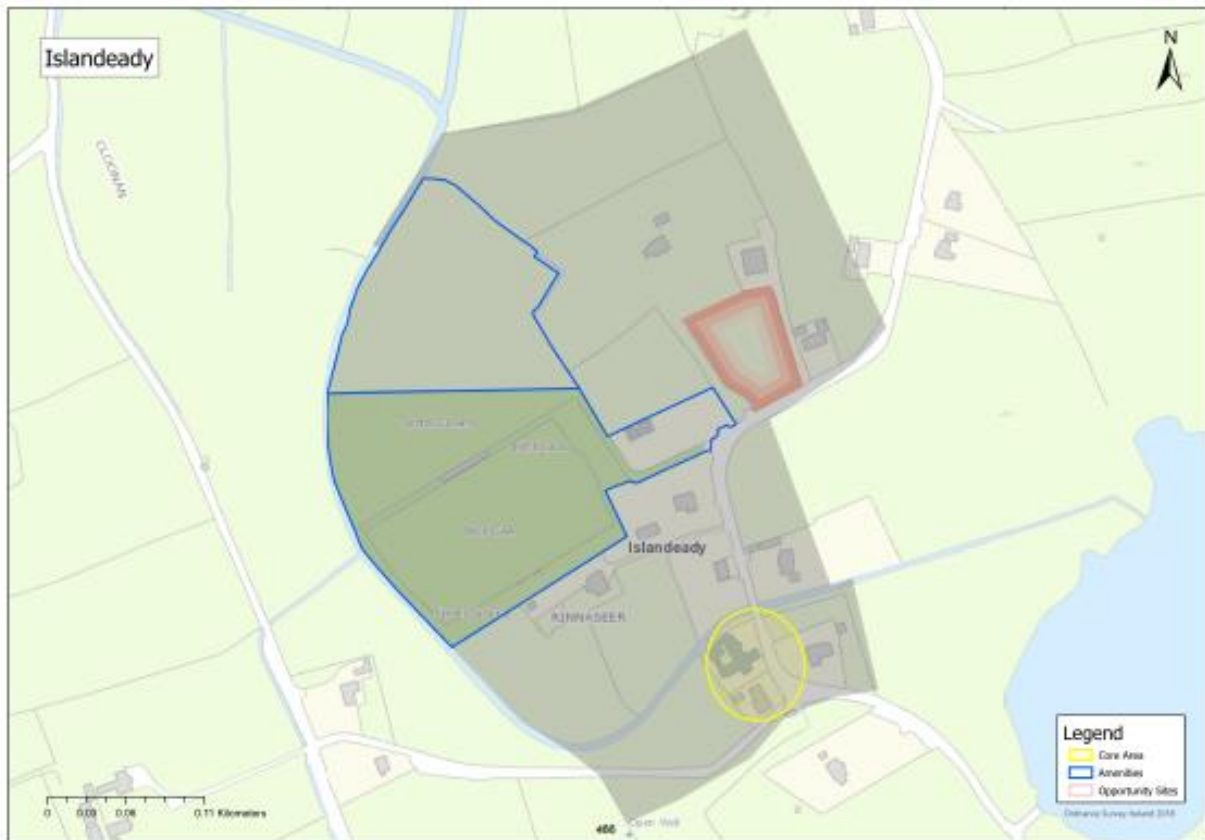
Revise map to illustrate Core Area, Core Enhancements, Boundary Extension (shown in hatching) & Opportunity Site as shown below:



Tier V: Islandeady

Proposed Amendment Tier V IDY 1		
Section	Heading	Map Ref
Tier V: Rural Countryside	Islandeady	Islandeady Map 2

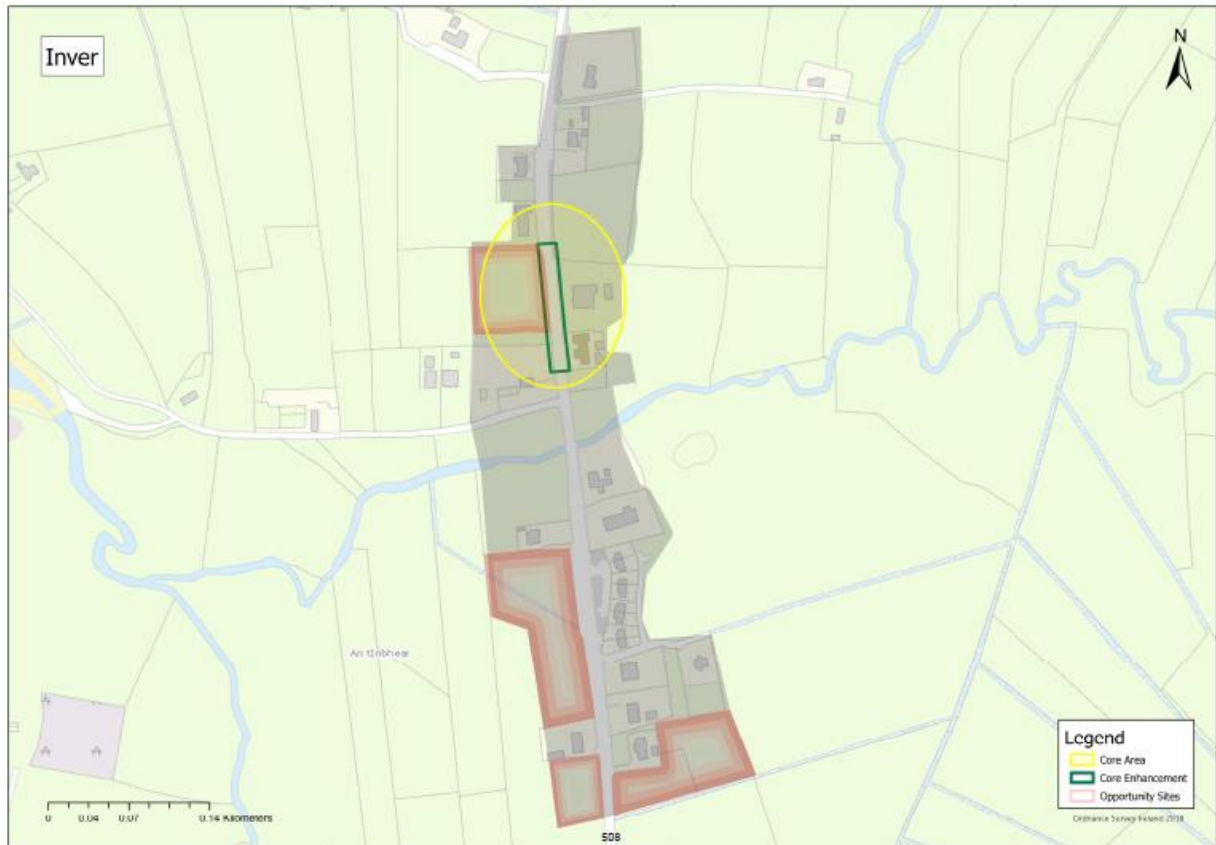
Revise map to illustrate Core Area, Amenities & Opportunity Sites as shown below:



Tier V: Inver

Proposed Amendment Tier V INV 1		
Section	Heading	Map Ref
Tier V: Rural Countryside	Inver	Inver Map 2

Revise map to illustrate Core Area, Core Enhancements & Opportunity Sites as shown below:



Tier V: Kilmovee

Proposed Amendment Tier V KVE 1		
Section	Heading	Map Ref
Tier V: Rural Countryside	Kilmovee	Kilmovee Map 2

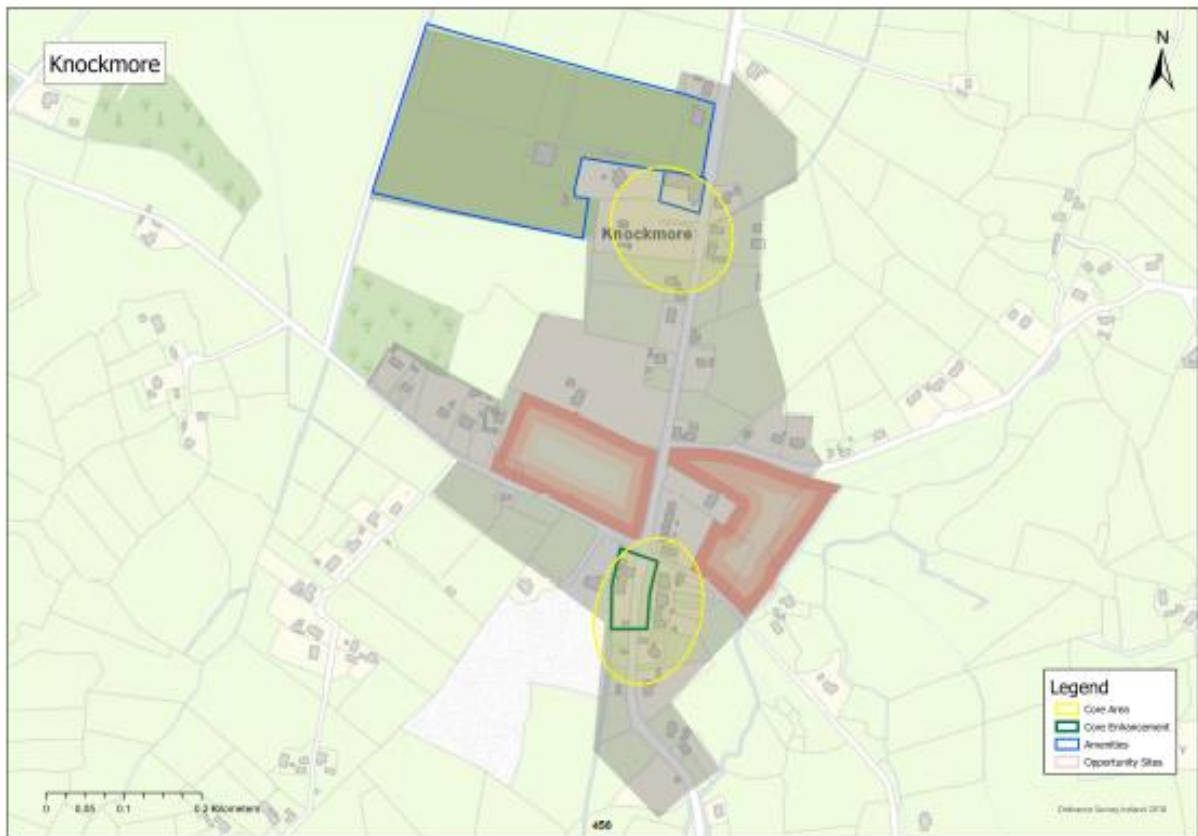
Revise map to illustrate Core Area & Amenities as shown below:



Tier V: Knockmore

Proposed Amendment Tier V KNO 1		
Section	Heading	Map Ref
Tier V: Rural Countryside	Knockmore	Knockmore Map 2

Revise map to illustrate Core Area, Core Enhancements, Amenities & Opportunity Sites as shown below:



Tier V: Mayo Abbey

Proposed Amendment Tier V MAB 1		
Section	Heading	Map Ref
Tier V: Rural Countryside	Mayo Abbey	Mayo Abbey Map 2

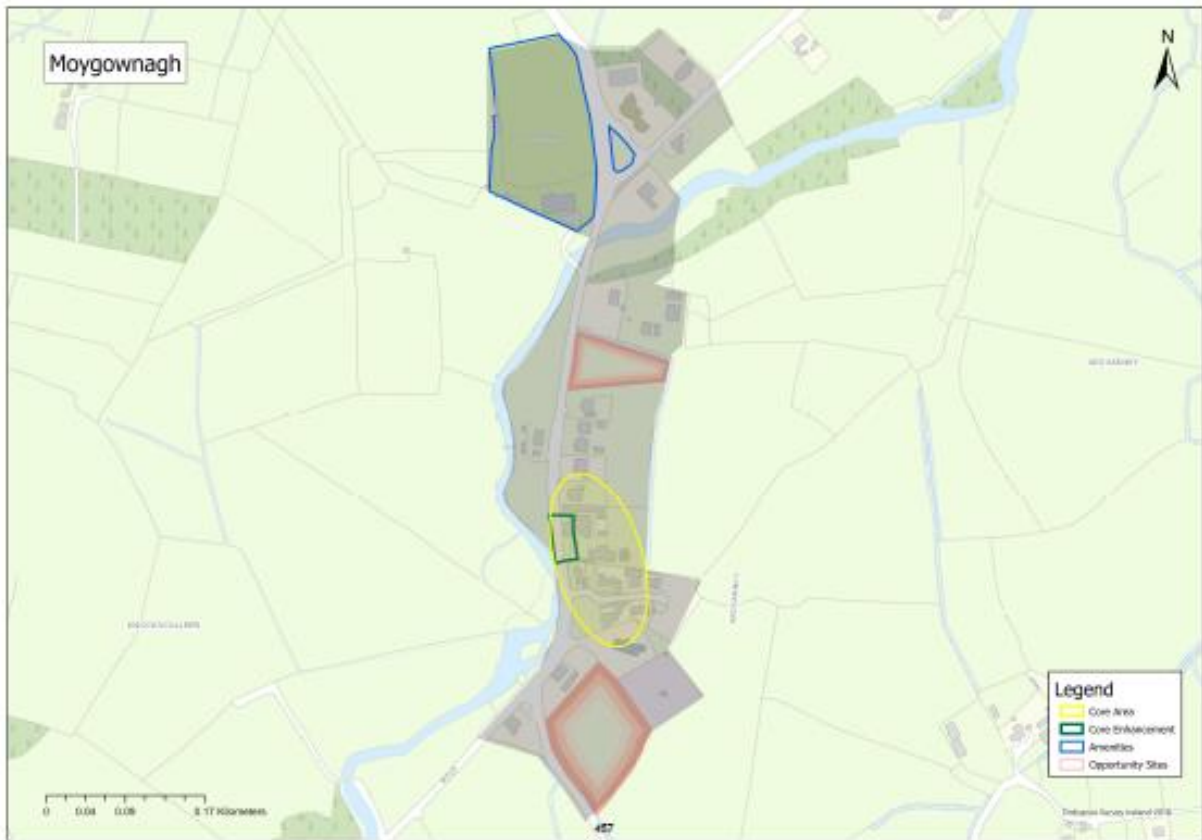
Revise map to illustrate Core Area, Core Enhancements, Amenities & Opportunity Sites as shown below:



Tier V: Moygownagh

Proposed Amendment Tier V MOY 1		
Section	Heading	Map Ref
Tier V: Rural Countryside	Moygownagh	Moygownagh Map 2

Revise map to illustrate Core Area, Core Enhancements, Amenities & Opportunity Sites as shown below:



Tier V: Moyne (Kilmeena)

Proposed Amendment Tier V KME 1		
Section	Heading	Map Ref
Tier V: Rural Countryside	Moyne (Kilmeena)	Moyne (Kilmeena) Map 2

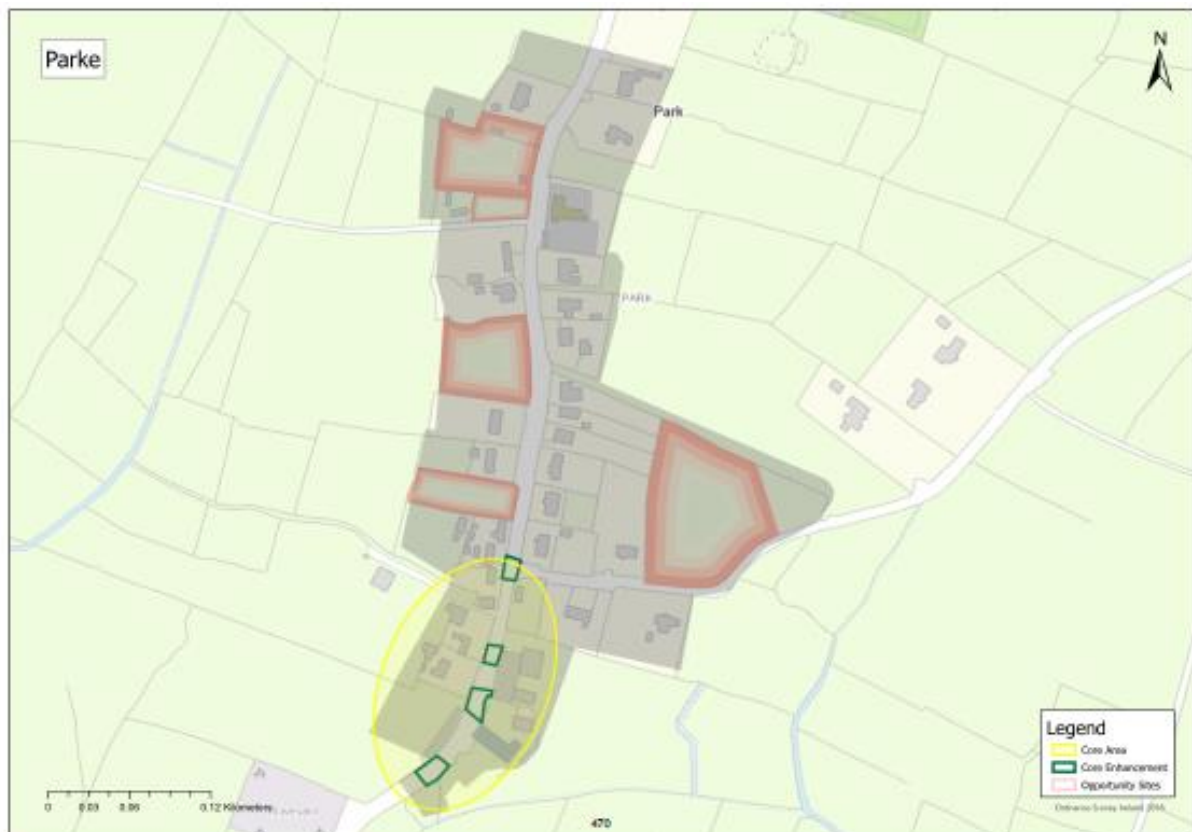
Revise map to illustrate Core Area, Core Enhancements, Amenities & Opportunity Sites as shown below:



Tier V: Parke

Proposed Amendment Tier V PAR 1		
Section	Heading	Map Ref
Tier V: Rural Countryside	Parke	Parke Map 2

Revise map to illustrate Core Area, Core Enhancements, Amenities & Opportunity Sites as shown below:



Tier V: Partry

Proposed Amendment Tier V PTY 1		
Section	Heading	Map Ref
Tier V: Rural Countryside	Partry	Partry Map 2

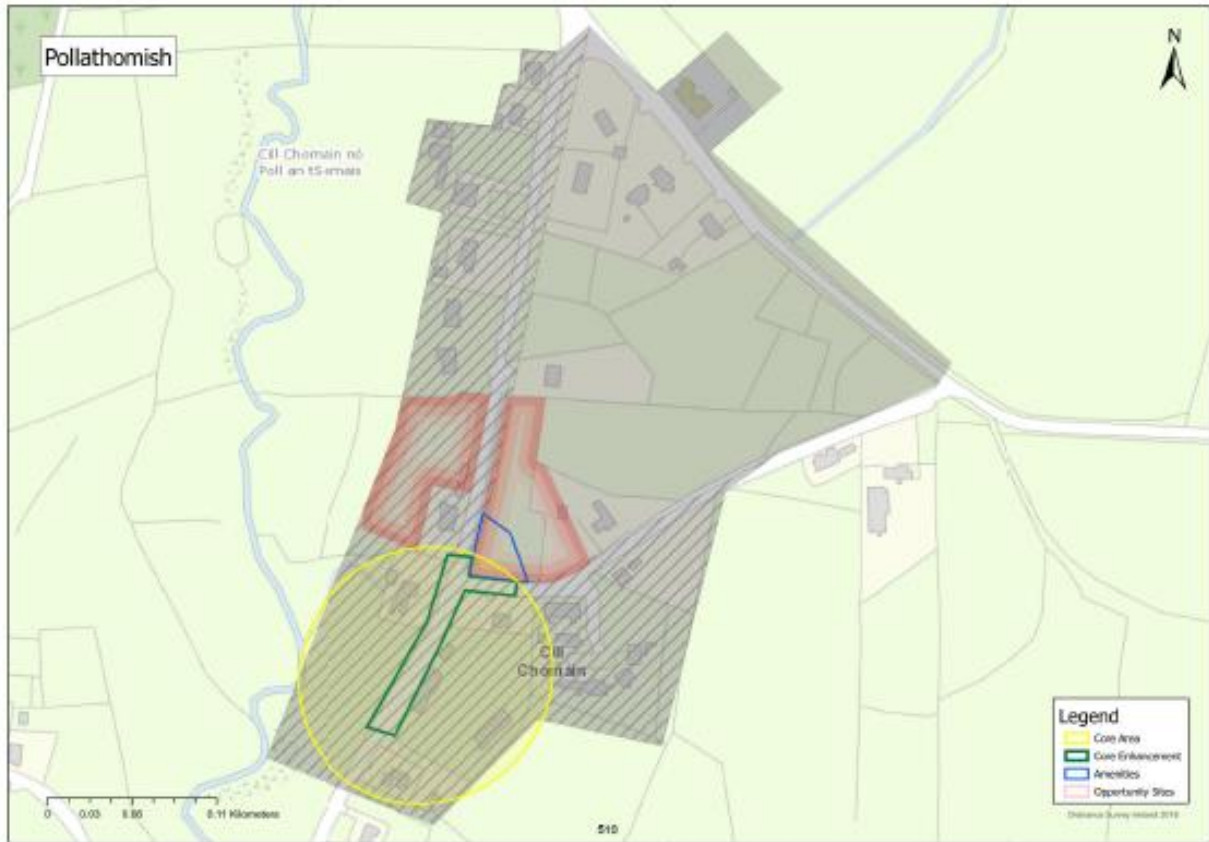
Revise map to illustrate Core Area, Core Enhancements, Boundary Extension (in hatching) & Opportunity Site as shown below:



Tier V: Pollathomish

Proposed Amendment Tier V POL 1		
Section	Heading	Map Ref
Tier V: Rural Countryside	Pollathomish	Pollathomish Map 2

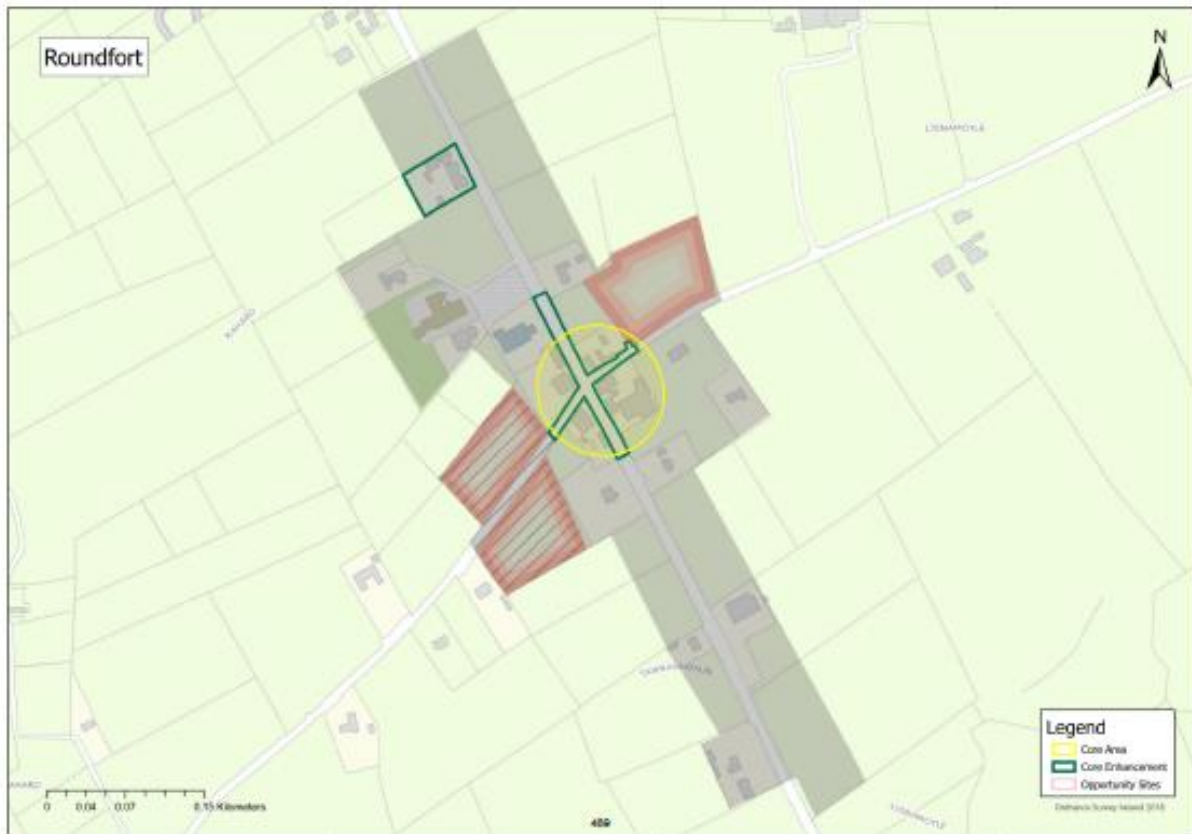
Revise map to illustrate Core Area, Core Enhancements, Boundary Extension (shown in hatching), Amenities & Opportunity Sites as shown below:



Tier V: Roundfort

Proposed Amendment Tier V RFT 1		
Section	Heading	Map Ref
Tier V: Rural Countryside	Roundfort	Roundfort Map 2

Revise map to illustrate Core Area, Core Enhancements, Boundary Extensions (shown in hatching), Amenities & Opportunity Sites as shown below:



Tier V: The Neale

Proposed Amendment Tier V NLE 1		
Section	Heading	Map Ref
Tier V: Rural Countryside	The Neale	The Neale Map 2

Revise map to illustrate Core Area, Core Enhancements, Amenities & Opportunity Sites as shown below:



Tier V: Tourmakeady

Proposed Amendment Tier V TOU 1		
Section	Heading	Map Ref
Tier V: Rural Countryside	Tourmakeady	Tourmakeady Map 2

Revise map to illustrate Core Area, Core Enhancements, Amenities & Opportunity Sites as shown below:



NOTE:

The above document is available to view/download from the Council's Consultation Portal consult.mayo.ie, all other Material Amendment and Environment Assessments (SEA, AA, SFRA) documents are also available to view/download from consult.mayo.ie.