

Appendix
**10.10 Bat Low and Negligible
Roost Features**

APPENDIX 10

APPENDIX 10.10: BAT ROOST ASSESSMENT DATA

Table 1: Trees and Structures that were assessed as being of Low or Negligible suitability as bat roosts.

Bat Roost Suitability	ITM (X)	ITM (Y)	Site	Code	Description
Low	525766	821162	Quignamanger	S-Qui001S	Stone wall on the southern side of the road with ivy. No features, except ivy visible.
Negligible	525755	821163	Quignamanger	T-Qui001S	Ash tree and dead ash tree with thin ivy, south side road.
Negligible	525759	821167	Quignamanger	T-Qui002S	Ash with ivy covering.
Low	525777	821155	Quignamanger	T-Qui001N	Ash tree with ivy in hedgerow on northern side of road.
Low	525780	821151	Quignamanger	T-Qui002N	Ash tree with ivy in hedgerow on northern side of road.
Low	525783	821148	Quignamanger	T-Qui003N	Ash tree with ivy in hedgerow on northern side of road.
Low	525786	821144	Quignamanger	T-Qui004N	Ash tree with ivy in hedgerow on northern side of road.
Low	525788	821141	Quignamanger	T-Qui005N	Ash tree with ivy in hedgerow on northern side of road.
Low	525792	821135	Quignamanger	T-Qui006N	Ash tree with ivy in hedgerow on northern side of road.
Low	525794	821131	Quignamanger	T-Qui007N	Ash tree with ivy in hedgerow on northern side of road.
Low	525798	821125	Quignamanger	T-Qui008N	Ash tree with ivy in hedgerow on northern side of road.
Negligible	525779	821135	Quignamanger	T-Qui003S	Ash with thin ivy.
Low	525840	821050	Quignamanger	T-Qui009N	Sycamore in corner of garden with ivy.
Low	525843	821048	Quignamanger	T-Qui004S	Ash tree on south side of road with 5 boles.
Low	525914	820934	Quignamanger	T-Qui005S	Ash tree with ivy.
Low	525915	820926	Quignamanger	T-Qui006S	Ash tree with ivy in garden.
Low	525929	820915	Quignamanger	T-Qui007S	Hawthorn in garden over fence with thick ivy.
Low	525929	820915	Quignamanger	T-Qui008S	Hawthorn in garden over fence with thick ivy.
Low	525929	820915	Quignamanger	T-Qui009S	Hawthorn in garden over fence with thick ivy.
Low	525944	820901	Quignamanger	T-Qui010S	Hawthorn in corner of garden with ivy.
Low	525948	820896	Quignamanger	T-Qui011S	Ash tree in back garden.
Low	525964	820882	Quignamanger	T-Qui012S	Ash tree in corner of garden with light ivy covering.
Low	525968	820879	Quignamanger	T-Qui013S	Hawthorn tree in garden with dense ivy.
Low	525977	820871	Quignamanger	T-Qui014S	Ash in corner of garden with heavy ivy.
Low	525977	820871	Quignamanger	T-Qui015S	Ash in corner of garden with heavy ivy.

APPENDIX 10

Bat Roost Suitability	ITM (X)	ITM (Y)	Site	Code	Description
Low	525977	820871	Quignamanger	T-Qui016S	Hawthorn in corner of garden with heavy ivy.
Negligible	526292	819557	Bunree/Behy Rd.	T-Bun001S	Unidentifiable dead tree with low ivy covering.
Negligible	526467	819557	Bunree/Behy Rd.	T-Bun002S	Relatively young sycamore with low ivy covering.
Negligible	526697	819554	Bunree/Behy Rd.	T-Bun003S	Ash tree with thin ivy covering.
Negligible	526003	819592	Brusna	T-Bun004N	Hawthorn with ivy on north side of road.
Negligible	525941	819601	Brusna	T-Bun005N	Sycamore with ivy on north side of road.
Negligible	525979	819595	Brusna	T-Bun006N	Ash with ivy on north side of road.
Low	526675	818225	Brusna	T-Brus001	Sycamore with thin ivy.
Low	526632	818256	Brusna	T-Brus002	Almost dead ash with ivy.
Low	526623	818265	Brusna	T-Brus003	Ash tree with ivy.
Negligible	526609	818283	Brusna	T-Brus004	Hawthorn with thin ivy.
Low	526596	818299	Brusna	T-Brus005	Sycamore tree with ivy.
Low	526590	818294	Brusna	T-Brus006	Ash tree with ivy.
Low	526588	818295	Brusna	T-Brus007	Ash tree with ivy.
Low	526578	818306	Brusna	T-Brus008	Hawthorn tree with ivy.
Low	526581	818309	Brusna	T-Brus009	Hawthorn tree with ivy.
Low	526562	818326	Brusna	T-Brus010	Sycamore tree with ivy.
Low	526528	818391	Brusna	T-Brus011	Sycamore tree with heavy ivy.
Low	526532	818389	Brusna	T-Brus012	Sycamore tree with heavy ivy.
Low	526533	818386	Brusna	T-Brus013	Ash tree with heavy ivy.
Low	526587	818321	Brusna	T-Brus014	Sycamore tree with ivy.
Low	526594	818320	Brusna	T-Brus015	Alder tree with ivy.
Negligible	526605	818305	Brusna	T-Brus016	Alder tree with thin ivy.
Low	526615	818296	Brusna	T-Brus017	Almost dead alder tree with heavy ivy.
Low	526638	818281	Brusna	T-Brus018	Holly tree with ivy.
Low	526638	818283	Brusna	T-Brus019	Alder tree with ivy.
Low	526638	818282	Brusna	T-Brus020	Alder tree with ivy.
Low	526638	818282	Brusna	T-Brus021	Trees with ivy.
Low	526656	818270	Brusna	T-Brus022	Alder tree with ivy.

APPENDIX 10

Bat Roost Suitability	ITM (X)	ITM (Y)	Site	Code	Description
Low	526696	818265	Brusna	T-Brus023	Sycamore tree with ivy.
Low	526691	818251	Brusna	T-Brus024	Hawthorn with ivy.
Low	526691	818248	Brusna	T-Brus025	Hawthorn with ivy.
Low	526690	818246	Brusna	T-Brus026	Hawthorn with ivy.
Low	526688	818242	Brusna	T-Brus027	Hawthorn with ivy.
Low	526682	818238	Brusna	T-Brus028	Tree on RHB on stream with ivy and cracked bark.
Low	526676	818242	Brusna	T-Brus029	Hawthorn with ivy on right-hand bank of river.
Low	526672	818242	Brusna	T-Brus030	Hawthorn with ivy on right-hand bank of river.
Low	526669	818245	Brusna	T-Brus031	Hawthorn with ivy on right-hand bank of river.
Low	526666	818248	Brusna	T-Brus032	Hawthorn with ivy on right-hand bank of river.
Low	526660	818248	Brusna	T-Brus033	Hawthorn with ivy on right-hand bank of river.
Low	526664	818252	Brusna	T-Brus034	Hawthorn with ivy on right-hand bank of river.
Low	526665	818243	Brusna	T-Brus035	Hawthorn with ivy on right-hand bank of river.
Low	526664	818247	Brusna	T-Brus036	Hawthorn with ivy on right-hand bank of river.
Low	526424	818523	Brusna	T-Brus037	Ash with ivy on right-hand bank of river.
Low	526431	818524	Brusna	T-Brus038	Ash with ivy on right-hand bank of river.
Low	526425	818518	Brusna	T-Brus039	Ash with ivy on right-hand bank of river.
Negligible	526432	818518	Brusna	T-Brus040	Ash with ivy on right-hand bank of river.
Negligible	526427	818513	Brusna	T-Brus041	Ash with ivy on right-hand bank of river.
Low	526433	818514	Brusna	T-Brus042	Ash with ivy on right-hand bank of river.
Low	526428	818508	Brusna	T-Brus043	Ash with ivy on right-hand bank of river.
Negligible	526433	818507	Brusna	T-Brus044	Hawthorn with ivy on right-hand bank of river.
Low	526437	818506	Brusna	T-Brus045	Ash with ivy on right-hand bank of river.
Low	526430	818501	Brusna	T-Brus046	Ash with ivy on right-hand bank of river.
Negligible	526437	818499	Brusna	T-Brus047	Hawthorn with ivy on right-hand bank of river.
Low	526430	818495	Brusna	T-Brus048	Ash with ivy on right-hand bank of river.
Negligible	526439	818492	Brusna	T-Brus049	Hawthorn with ivy on right-hand bank of river.
Negligible	526431	818492	Brusna	T-Brus050	Ash with ivy on right-hand bank of river.
Low	526444	818490	Brusna	T-Brus051	Willow on right-hand bank of river.

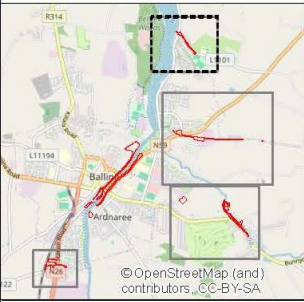
APPENDIX 10

Bat Roost Suitability	ITM (X)	ITM (Y)	Site	Code	Description
Low	526433	818488	Brusna	T-Brus052	Ash with ivy on right-hand bank of river.
Low	526436	818487	Brusna	T-Brus053	Ash with ivy on right-hand bank of river.
Low	526444	818484	Brusna	T-Brus054	Sycamore with ivy on right-hand bank of river.
Low	526436	818484	Brusna	T-Brus055	Ash with ivy on right-hand bank of river.
Negligible	526433	818481	Brusna	T-Brus056	Hawthorn with ivy on right-hand bank of river.
Low	526448	818481	Brusna	T-Brus057	Ash with ivy on right-hand bank of river.
Low	526436	818478	Brusna	T-Brus058	Ash with ivy on right-hand bank of river.
Low	526444	818477	Brusna	T-Brus059	Ash with ivy on right-hand bank of river.
Negligible	526440	818474	Brusna	T-Brus060	Ash with ivy on right-hand bank of river.
Negligible	526453	818475	Brusna	T-Brus061	Ash with ivy on right-hand bank of river.
Negligible	526446	818471	Brusna	T-Brus062	Ash with ivy on right-hand bank of river.
Negligible	526440	818470	Brusna	T-Brus063	Ash with ivy on right-hand bank of river.
Negligible	526454	818470	Brusna	T-Brus064	Ash with ivy on right-hand bank of river.
Low	526451	818466	Brusna	T-Brus065	Ash with ivy on right-hand bank of river.
Low	526457	818463	Brusna	T-Brus066	Ash with ivy on right-hand bank of river.
Low	526456	818460	Brusna	T-Brus67	Ash with ivy on right-hand bank of river.
Negligible	526460	818460	Brusna	T-Brus68	Ash with ivy on right-hand bank of river.
Negligible	526451	818457	Brusna	T-Brus69	Ash with ivy on right-hand bank of river.
Negligible	526462	818455	Brusna	T-Brus70	Ash with ivy on right-hand bank of river.
Low	523723	817643	Tullyegan	T-Tul001	Ash tree with ivy on left hand bank of stream by railway line.
Low	523721	817639	Tullyegan	T-Tul002	Ash tree with ivy on left hand bank of stream by railway line.



Legend

- Red Line Boundary
- Bat Roost Suitability**
- low
- neg



© OpenStreetMap (and) contributors, CC-BY-SA
 Client: Comhairle Contae Mhaigh Eo Mago County Council

Ballina Flood Relief Scheme
Bat Roost Suitability
 Quignamanger and Ballina Quay
 Page 1 of 4

RPS West Pier Business Campus, Dun Laoghaire, Co Dublin, Ireland. T +353 (0) 1 4862200 E ireland@rpsgroup.com W rpsgroup.com/ireland

Issue Details

File Identifier:
MGW0290-RPS-EI-XX-D-EN-0137

Status:	Rev:	Model File Identifier:
S4	P02	

Drawn:	PK, MV	Date:	23/10/2024
Checked:	JL	Scale:	1:3,000 @A3
Approved:	PJG	Projection:	ITM

NOTE:
 1. This drawing is the property of RPS Group Ltd. It is a confidential document and must not be copied, used, or its contents divulged without prior written consent.
 2. ©Taithe Éireann. All rights reserved. Licence number CYAL50360216

APPENDIX 10



Legend

- Red Line Boundary
- med
- neg

© OpenStreetMap (and) contributors, CC-BY-SA

Client

 Comhairle Contae Mhaigh Eo
 Mayo County Council

Ballina Flood Relief Scheme

Title
Bat Roost Suitability
 Bunree
 Page 2 of 4

RPS West Pier
 Business Campus, T +353 (0) 1 4882900
 Dun Laoghaire, E ireland@rpsgroup.com
 A TRINITY GROUP COMPANY Co Dublin, Ireland. W rpsgroup.com/ireland

Issue Details

File Identifier:
 MGW0290-RPS-EI-XX-D-EN-0137

Status: S4	Rev: P02	Model File Identifier:
Drawn: PK, MV	Date: 23/10/2024	
Checked: JL	Scale: 1:5,000	@A3
Approved: PJG	Projection: ITM	

NOTE:
 1. This drawing is the property of RPS Group Ltd. It is a confidential document and must not be copied, used, or its contents divulged without prior written consent.
 2. ©Táille Éireann. All rights reserved. Licence number CYAL50360216

Source: Esri, Maxar, Earthstar Geographics, and the GIS User Community

APPENDIX 10



Legend

- Red Line Boundary
- Bat Roost Suitability**
- low
- neg



Client
 Comhairle Contae Mhaigh Eo
 Mayo County Council

Ballina Flood Relief Scheme

Title
Bat Roost Suitability
 Brusna
 Page 3 of 4

RPS West Pier
 Business Campus, T +353 (0) 1 4882900
 Dun Laoghaire, E ireland@rpsgroup.com
 Co Dublin, Ireland. W rpsgroup.com/ireland

Issue Details

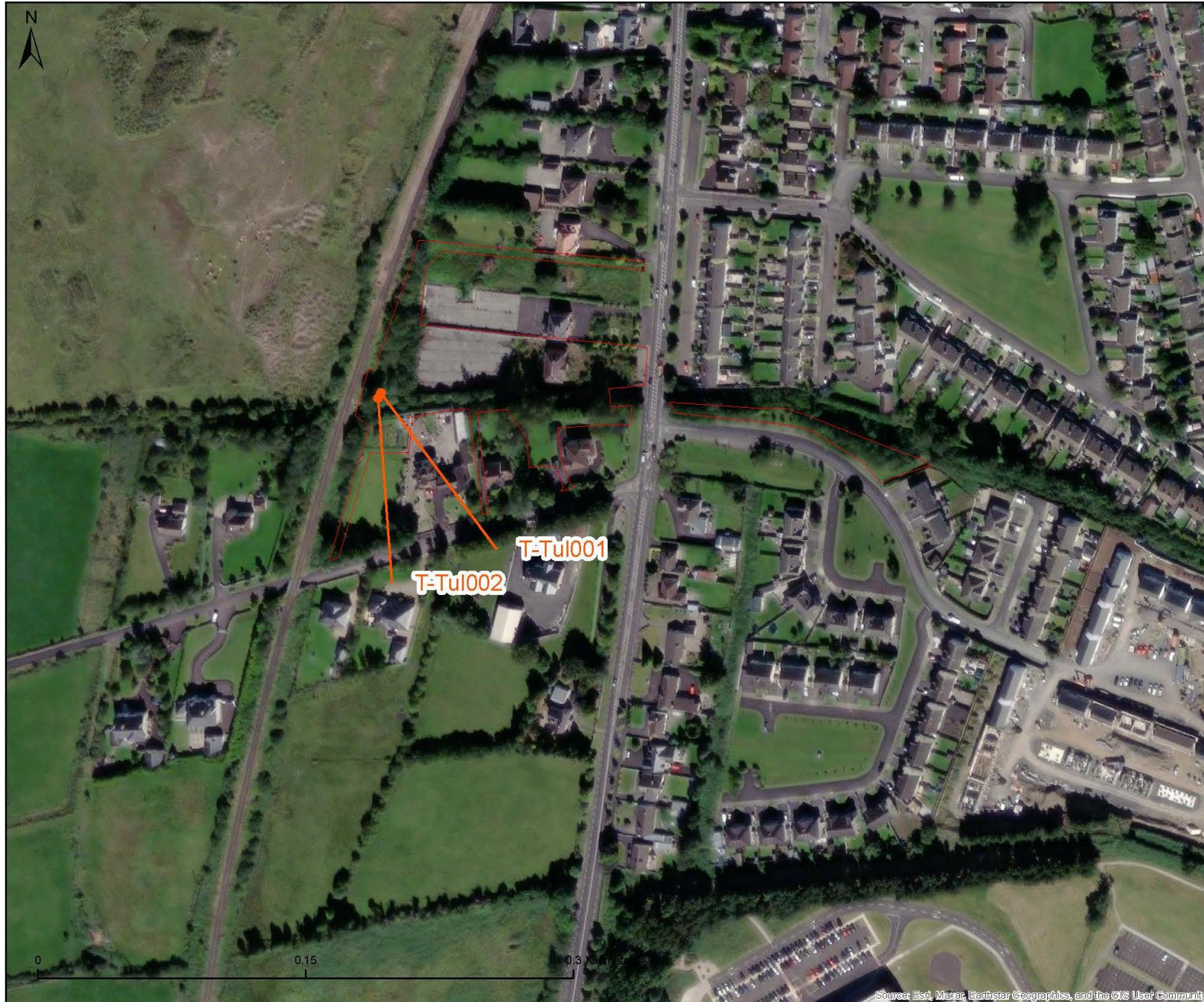
File Identifier:
 MGW0290-RPS-EL-XX-D-EN-0137

Status:	Rev:	Model File Identifier:
S4	P02	
Drawn: PK, MV	Date: 23/10/2024	
Checked: JL	Scale: 1:4,000	@A3
Approved: PJG	Projection: ITM	

NOTE:

1. This drawing is the property of RPS Group Ltd. It is a confidential document and must not be copied, used, or its contents divulged without prior written consent.
2. ©Táille Éireann. All rights reserved. Licence number CYAL50360216

APPENDIX 10



Legend

- Red Line Boundary
- Bat Roost Suitability**
- low

© OpenStreetMap (and) contributors, CC-BY-SA

Client

Comhairle Contae Mhaigh Eo
Mago County Council

Ballina Flood Relief Scheme

Title

Bat Roost Suitability

Tullyegan

Page 4 of 4

RPS A TETRA TECH COMPANY West Pier
Business Campus, T +353 (0) 1 4882900
Dan Loughare, E ireland@rpsgroup.com
Co Dublin, Ireland. W rpsgroup.com/ireland

Issue Details

File Identifier:
MGW0290-RPS-EI-XX-D-EN-0137

Status: S4	Rev: P02	Model File Identifier:
Drawn: PK, MV	Date: 23/10/2024	
Checked: JL	Scale: 1:2,000	@A3
Approved: PJG	Projection: ITM	

NOTE:

1. This drawing is the property of RPS Group Ltd. It is a confidential document and must not be copied, used, or its contents divulged without prior written consent.
2. ©Taithe Éireann. All rights reserved. Licence number CYAL50360218

Source: Esri, Maxar, Earthstar Geographics, and the GIS User Community